



1065 | MISSION

+/- 1,273 SF GROUND FLOOR RETAIL FOR LEASE

maven
RETAIL



NEARBY BUSINESSES

zook

Square

Uber

twitter

wework

YAHOO!

DOLBY

Spotify

zendesk

AdRoll

imgur

BENCHMARK
CAPITAL

Yammer
The Enterprise Social Network

ONE KINGS LANE

gallsocket

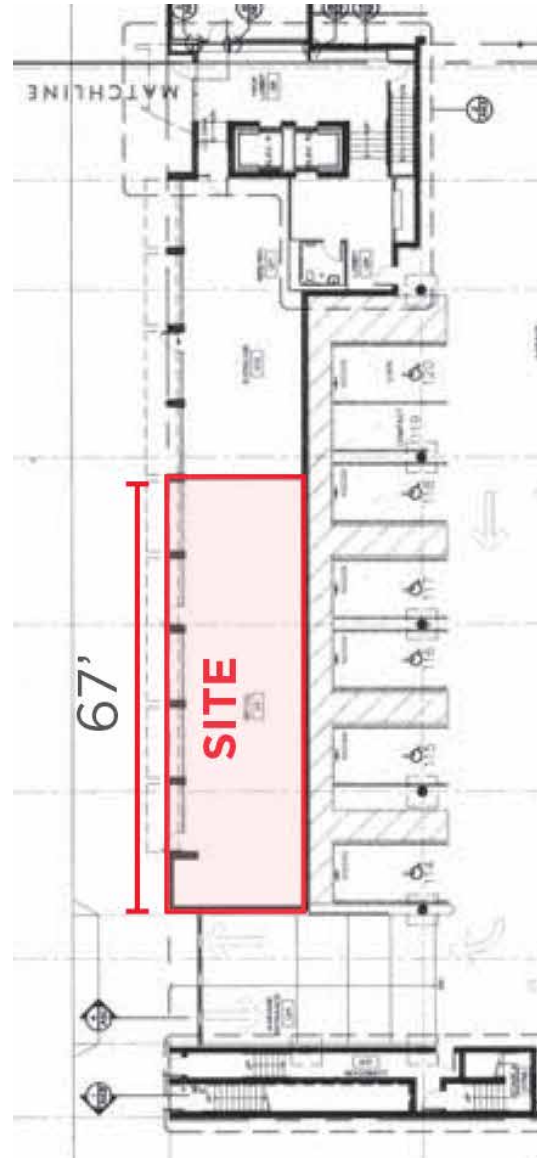
fastmetrics™

rocketfuel

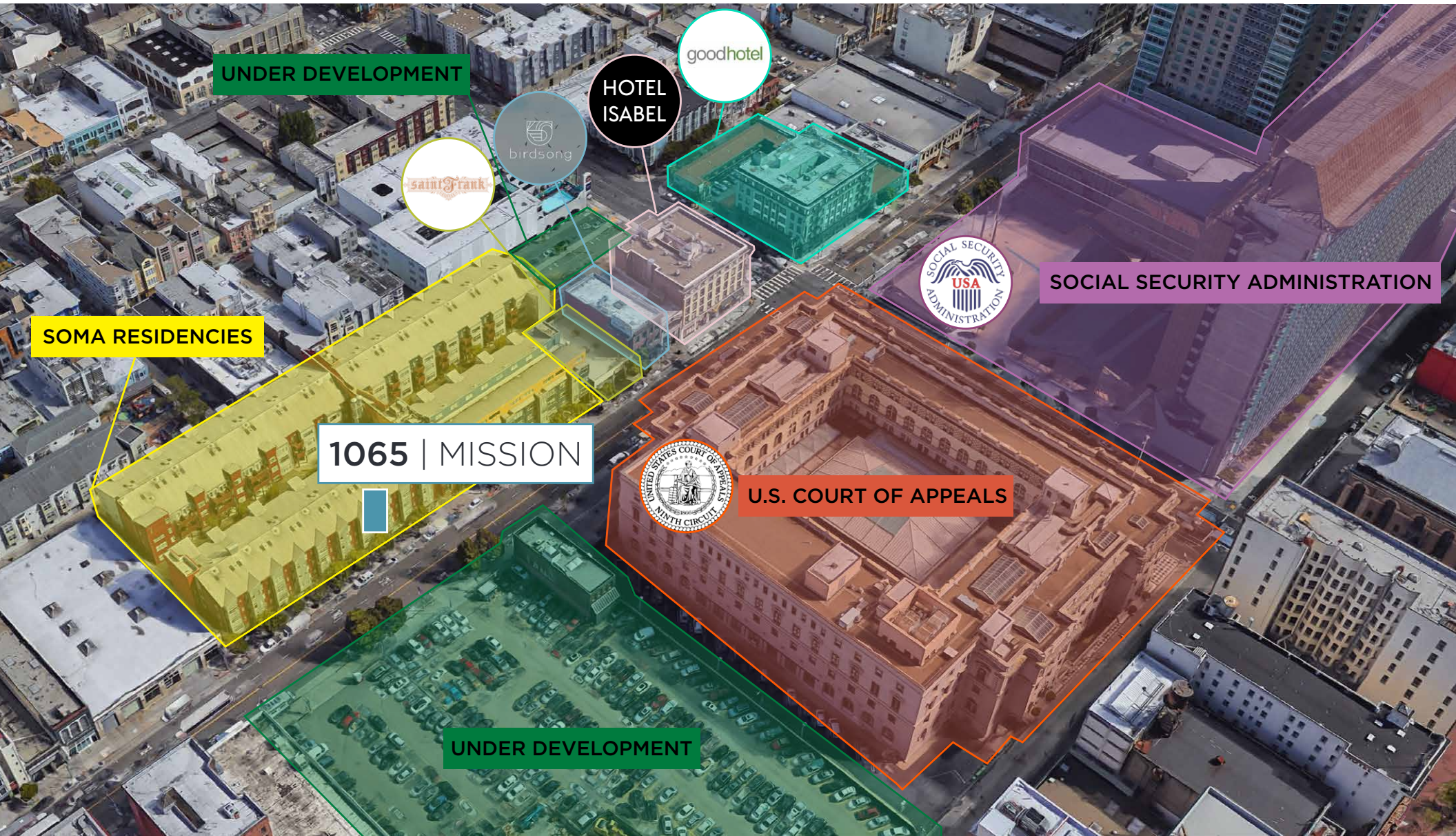
OpenTable

21TECH

MISSION STREET



- +/- 1,273 SF Ground Floor Retail
- Retail at SOMA Residences
- 278 On-site Residential units
- Excellent street frontage
- Good signage opportunity
- Storage space available
- Centrally located in vibrant
- Mid-Market corridor
- Strong daytime population
- Across from Federal building and Court of Appeals
- Over 3,000 residential units underway in neighborhood
- 67 Linear Feet of Street Frontage
- Mid-Market tech corridor with Twitter, Spotify, Zendesk and more...



- 1 ORPHEUM THEATRE
- 2 Westfield
- 3 POPSONS
- 4 CHAI BAR
- 5 BLICK art materials
- 6 wework
- 7 NORDSTROM
- 8 Saks Fifth Avenue OFF 5TH
- 9 CVS/pharmacy
- 10 Huckleberry BICYCLES
- 11 match.com
- 12 Spotify

GROUP I DEVELOPMENT

950-974 MARKET STREET
230 HOTEL ROOMS / 250 UNITS
15,000 SF RETAIL (2018)

SHORENSTEIN DEVELOPMENT

1066 MARKET STREET
304 UNITS (2018)

1028 MARKET STREET

PLANNED 186 APARTMENTS
10,000 SF

PROPER HOTEL

45 MCALLISTER STREET
HOTEL PROJECT, 135 ROOMS

TRINITY PLACE

1900 MARKET STREET
1,900 UNITS / 1,450 PARKING SP.
60,000 SF RETAIL



1

9

10

US COURT OF APPEALS



6X6

935-965 MARKET STREET
250,000 SF SHOPPING CENTER

1065 | MISSION

1077 MARKET PROJECT

1077 MARKET STREET
90 UNITS
8,500 SF RETAIL

HOTEL PROJECT

1055 MARKET STREET



ACT AT THE STRAND

1127 MARKET STREET
283-SEAT THEATER +
120-SEAT PERFORMANCE SPACE

YOTEL

1095 MARKET STREET
203 ROOMS /
84,000 SF & 3,500 SF RETAIL





NEIGHBORHOOD



1065 | MISSION

+/- 1,273 SF GROUND FLOOR RETAIL FOR LEASE



HALEY KLEIN

office 415.404.7330

haley@mavenproperties.com

BRE #01907308

JOAN RUYLE

office 415.404.7313

joan@mavenproperties.com

BRE #02006025

NOTICE: This information has been secured from sources we believe to be reliable but we make no representations, warranties, express or implied, as to the accuracy of the information. Listing broker has been given enough information to provide only a preliminary interest in the property. The materials are not to be considered fact. The information contained herein is not a substitute for thorough due diligence investigation. References to square footage, zoning, use, or age are approximate. Please contact the San Francisco Planning Department to verify zoning at (415) 558-6378, as neither broker or landlord represent that this space is suitable for your use. Tenant or Buyer must verify the information at their own expense and bears all the risk for any inaccuracies. By receiving these materials you are agreeing to the disclaimers set forth herein. BRE#01878802

466 Green Street Suite #203 | San Francisco, CA 94133 | 415.781.7700