



3201 MISSION San Francisco | CA

Bernal Heights Retail

maven
RETAIL

1,780 SQUARE FEET

MISSION DISTRICT

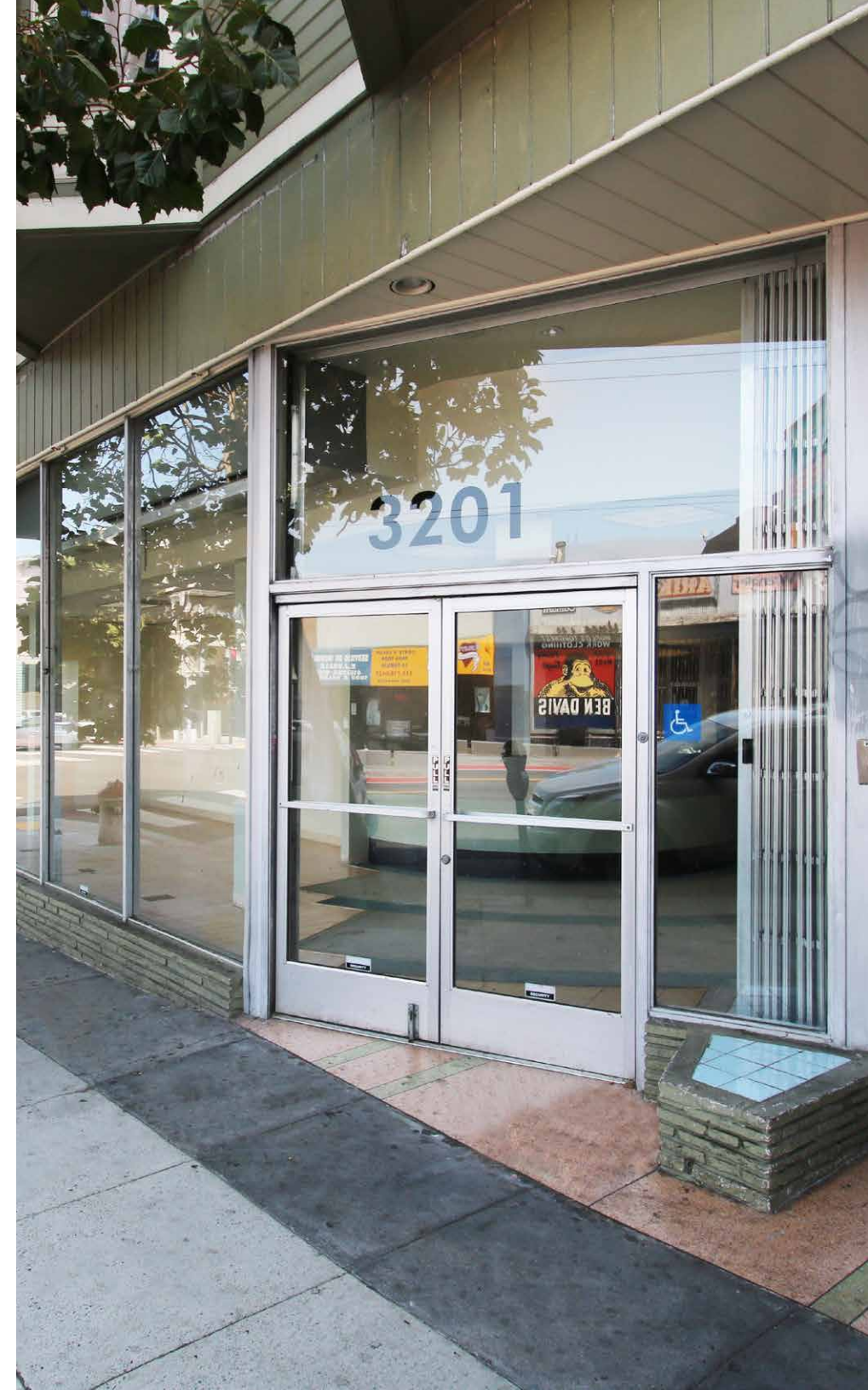
Features

- Approximately 1,780 SF
- Within 4 blocks from St. Luke's and CPMC Campuses
- Excellent visibility on Valencia & Mission Street intersection
- ADA restroom in place
- Excellent street frontage on Mission Street
- Floor to ceiling storefront windows
- Close to BART and Muni public transport



Features & Floor Plans

1,780 Square Feet of corner retail or professional offices. The space features high window lines and incredible visibility from both Mission and Valencia Streets. The space was previously used as a medical/dental, but may be suitable for many uses. Very close to BART, MUNI, and shopping.



Mission District

SAN FRANCISCO, CA

The Mission is an eclectic blend of tech, art, and culture, a ground zero for new restaurants and pop-ups. It is incredibly walkable and bike-friendly with numerous lounges, clubs & entertainment venues. Colorful hispanic heritage with all around food, parades, and more. The sunniest microclimate in San Francisco.



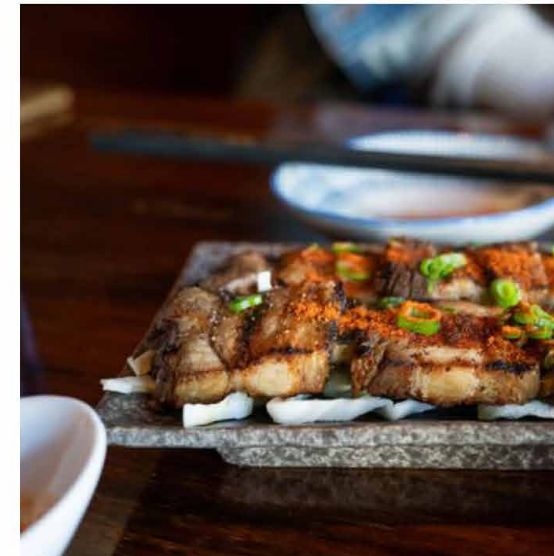
CAFE SEVENTY8



NOETECA WINE BAR



MITCHELL'S ICE CREAM



COCO'S RAMEN



SF PIZZAHACKER



EMMY'S SPAGHETTI SHACK

The Mission District



..... Neighborhood Tenants.....

3201 MISSION



3201 MISSION San Francisco | CA

Bernal Heights Retail

maven
RETAIL

Contacts

HALEY KLEIN

office 415.404.7330

haley@mavenproperties.com

DRE #01907308

SANTINO DEROSE

office 415.404.7337

sd@mavenproperties.com

DRE #01338326

NOTICE: This information has been secured from sources we believe to be reliable but we make no representations, warranties, express or implied, as to the accuracy of the information. Listing broker has been given enough information to provide only a preliminary interest in the property. The materials are not to be considered fact. The information contained herein is not a substitute for thorough due diligence investigation. References to square footage, zoning, use, or age are approximate. Please contact the San Francisco Planning Department to verify zoning at (415) 558-6378, as neither broker or landlord represent that this space is suitable for your use. Tenant or Buyer must verify the information at their own expense and bears all the risk for any inaccuracies. By receiving these materials you are agreeing to the disclaimers set forth herein. DRE#01878802