

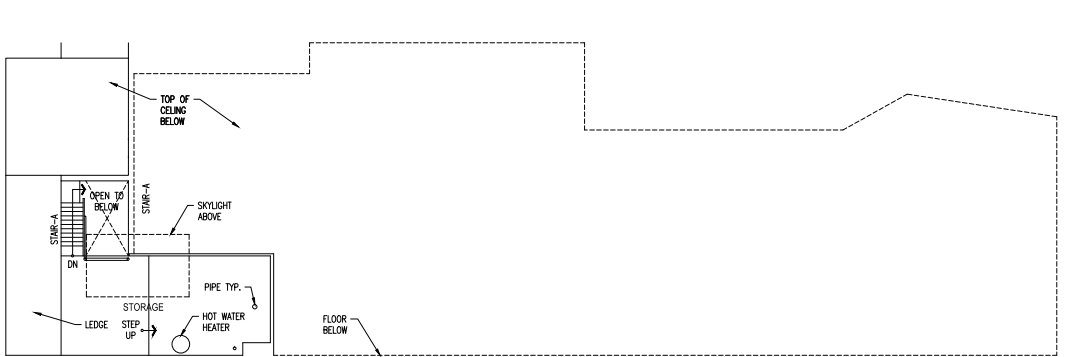
**FOR
LEASE**

1217
POLK
SAN FRANCISCO
CALIFORNIA

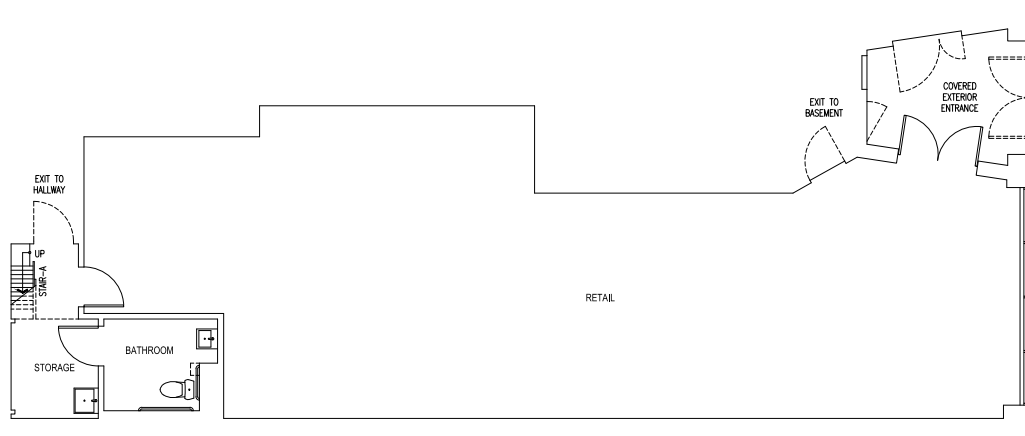
**+/-
1,758 SF
RETAIL**

1217

maven
RETAIL



LEVEL 2



LEVEL 1

FEATURES

- +/- 1,758 SF
- High Visibility Location
- Open Floor Plan
- 16 Foot Ceilings with wood rafters under the drop ceiling
- Excellent Street Frontage
- Located in the heart of the vibrant lower Polk corridor



1525 PINE ST

Net Units: 15
Net Non-Res SF: -25
Status: Proposed
Zoning: NCD

playland
bar

THE POUR HOUSE
WINE BAR & BEER LOUNGE



1217 POLK
SAN FRANCISCO, CALIFORNIA

1433 BUSH ST

Net Units: 47
Net Non-Res SF: -4,770
Status: Planning Entitled
Zoning: RC-4

GRIST STAKE
SAN FRANCISCO CALIFORNIA

PEOPLES
BARBER & SHOP

MAYES
OYSTER HOUSE

1238 SUTTER ST

Net Units: 37
Net Non-Res SF: 0
Status: Under Construction
Zoning: RC-4

LUSH LOUNGE

RUSTED MULE

HEMLOCK

blur

eleven o one

SLIDERS

VERTIGO
RESTAURANT & BAR

1145 POLK ST

Net Units: 54
Net Non-Res SF: -13,737
Status: Proposed
Zoning: NCD

upcider



1033 POLK ST

Net Units: 9
Net Non-Res SF: 0
Status: Proposed
Zoning: RC-4

KAMA SUSHI

1200 VAN NESS AVE

Net Units: 95
Net Non-Res SF: 38,046
Status: Proposed
Zoning: RC-4

CPMC HOSPITAL

470,833 SF

maven
RETAIL



PEOPLE'S BARBER



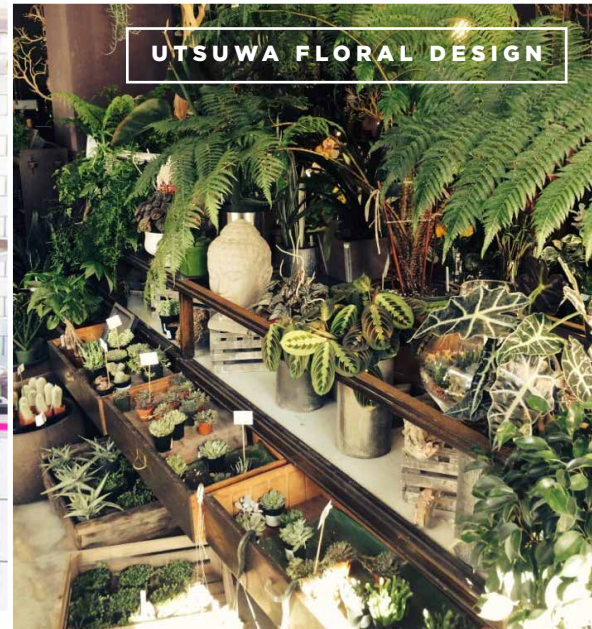
RUSTED MULE



BATTER BAKERY



MR. HOLMES
BAKEHOUSE



UTSUWA FLORAL DESIGN



PLAYLAND BAR



HALEY KLEIN

office 415.404.7330

haley@mavenproperties.com

BRE #01907308

JOAN RUYLE

office 415.404.7313

joan@mavenproperties.com

BRE #02006025

NOTICE: This information has been secured from sources we believe to be reliable but we make no representations, warranties, express or implied, as to the accuracy of the information. Listing broker has been given enough information to provide only a preliminary interest in the property. The materials are not to be considered fact. The information contained herein is not a substitute for thorough due diligence investigation. References to square footage, zoning, use, or age are approximate. Please contact the San Francisco Planning Department to verify zoning at (415) 558-6378, as neither broker or landlord represent that this space is suitable for your use. Tenant or Buyer must verify the information at their own expense and bears all the risk for any inaccuracies. By receiving these materials you are agreeing to the disclaimers set forth herein. BRE#01878802