



LOWER NOB HILL RETAIL SPACE FOR LEASE

FOR MORE INFORMATION PLEASE CONTACT:

**DOMINIC MORBIDELLI** office 415.781.7700 · cell 510.504.6432 · dom@deroseappelbaum.com

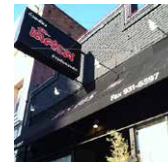
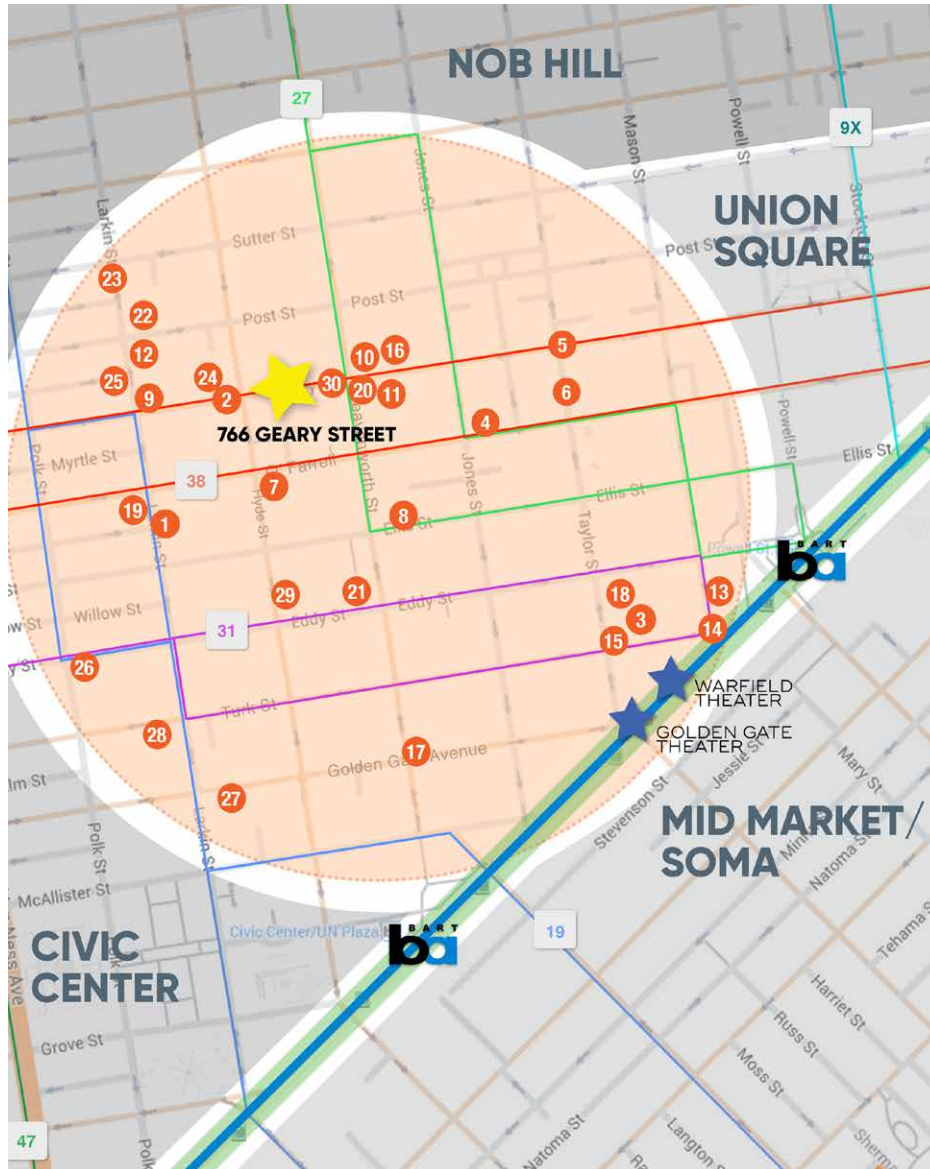
**SANTINO DEROSE** office 415.781.7700 · cell 415.336.0151 · sd@deroseappelbaum.com

**FEATURES**

- +/- 650 SF
- Wide Storefront
- Recent Upgrades
- Private Bathroom
- Vintage San Francisco Architecture
- Abundant Sunlight



# MAP



**1 LERS ROS**  
730 LARKIN STREET  
SAN FRANCISCO, CA



**2 RUM AND SUGAR**  
823 GEARY STREET  
SAN FRANCISCO, CA



**3 COUNTER PULSE**  
80 TURK STREET  
SAN FRANCISCO, CA



**4 BOURBON AND BRANCH**  
501 JONES STREET  
SAN FRANCISCO, CA



**5 THE OWL TREE**  
601 POST STREET  
SAN FRANCISCO, CA



**6 NAPA VALLEY WINERY EXCHANGE**  
415 TAYLOR STREET  
SAN FRANCISCO, CA



**7 HOOKER'S SWEETS**  
442 HYDE STREET  
SAN FRANCISCO, CA



**8 JESSICA SILVERMAN GALLERY**  
488 ELLIS STREET  
SAN FRANCISCO, CA



**9 WHISKEY THIEVES**  
839 GEARY STREET  
SAN FRANCISCO, CA



**10 RYE**  
688 GEARY STREET  
SAN FRANCISCO, CA



**11 REDFORD**  
673 GEARY STREET  
SAN FRANCISCO, CA



**12 THE JOINT**  
1014 LARKIN STREET  
SAN FRANCISCO, CA



**13 MIKKELLER**  
34 MASON STREET  
SAN FRANCISCO, CA



**14 FARMER BROWN**  
25 MASON STREET  
SAN FRANCISCO, CA



**15 BIG**  
98 TURK STREET  
SAN FRANCISCO, CA



**16 MENSJO RAMEN**  
672 GEARY STREET  
SAN FRANCISCO, CA



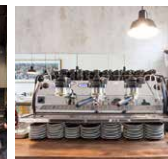
**17 826 VALENCIA**  
166 GOLDEN GATE AVENUE  
SAN FRANCISCO, CA



**18 PIANO FIGHT THEATER**  
144 TAYLOR STREET  
SAN FRANCISCO, CA



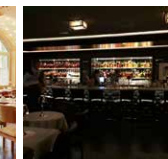
**19 ESAN CLASSIC**  
739 LARKIN STREET  
SAN FRANCISCO, CA



**20 SCULLERY**  
687 GEARY STREET  
SAN FRANCISCO, CA



**21 BLACK CAT**  
400 EDDY STREET  
SAN FRANCISCO, CA



**22 SARATOGA**  
1000 LARKIN STREET  
SAN FRANCISCO, CA



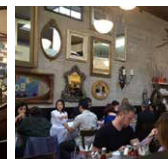
**23 MR. HOLMES BAKEHOUSE**  
1402 LARKIN STREET  
SAN FRANCISCO, CA



**24 HUXLEY**  
846 GEARY STREET  
SAN FRANCISCO, CA



**25 JANE**  
925 LARKIN STREET  
SAN FRANCISCO, CA



**26 BRENDA'S FRENCH SOUL FOOD**  
652 POLK STREET  
SAN FRANCISCO, CA



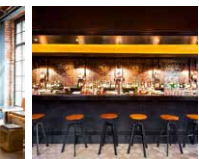
**27 ELEPHANT SUSHI**  
380 GOLDEN GATE AVENUE  
SAN FRANCISCO, CA



**28 PHILZ COFFEE**  
399 GOLDEN GATE AVENUE  
SAN FRANCISCO, CA



**29 ONSEN**  
466 EDDY STREET  
SAN FRANCISCO, CA



**30 Rx BAR**  
701 GEARY STREET  
SAN FRANCISCO, CA





# LOWER NOB HILL



**NOTICE:** This information has been secured from sources we believe to be reliable but we make no representations, warranties, express or implied, as to the accuracy of the information. Listing broker has been given enough information to provide only a preliminary interest in the property. The materials are not to be considered fact. The information contained herein is not a substitute for thorough due diligence investigation. References to square footage, zoning, use, or age are approximate. Please contact the San Francisco Planning Department to verify zoning at (415) 558-6378, as neither broker or landlord represent that this space is suitable for your use. Tenant or Buyer must verify the information at their own expense and bears all the risk for any inaccuracies. By receiving these materials you are agreeing to the disclaimers set forth herein.





**DOMINIC MORBIDELLI** office 415.781.7700 · cell 510.504.6432 · dom@deroseappelbaum.com

**SANTINO DEROSE** office 415.781.7700 · cell 415.336.0151 · sd@deroseappelbaum.com



NOTICE: This information has been secured from sources we believe to be reliable but we make no representations, warranties, express or implied, as to the accuracy of the information. Listing broker has been given enough information to provide only a preliminary interest in the property. The materials are not to be considered fact. The information contained herein is not a substitute for thorough due diligence investigation. References to square footage, zoning, use, or age are approximate. Please contact the San Francisco Planning Department to verify zoning at (415) 558-6378, as neither broker or landlord represent that this space is suitable for your use. Tenant or Buyer must verify the information at their own expense and bears all the risk for any inaccuracies. By receiving these materials you are agreeing to the disclaimers set forth herein.