

# 300 DEHARO

SAN FRANCISCO • CA

THE BLUE BUILDING  
GROUND FLOOR COMMERCIAL

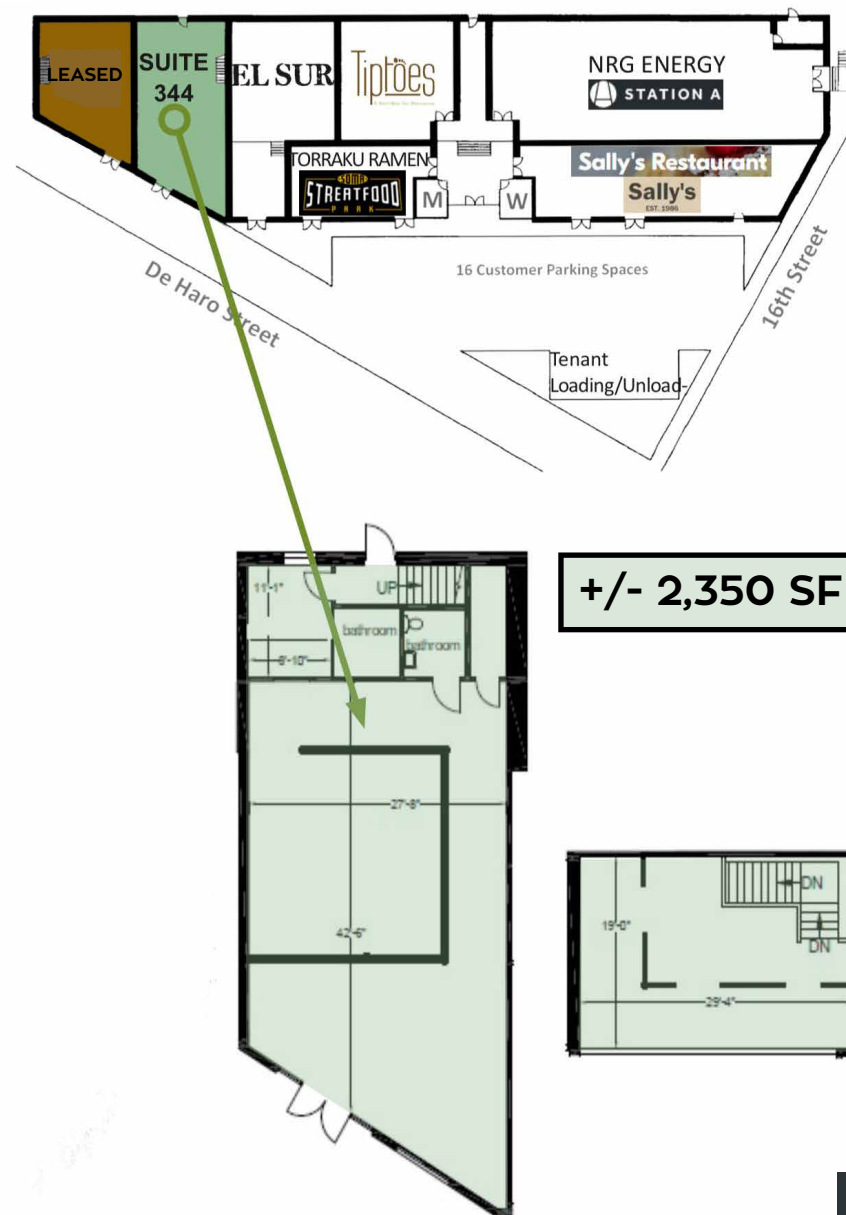
+/- 2,350 SF

maven  
RETAIL



## FEATURES

- High Ceilings (13'-20')
- Great Natural Light
- 200 Amps Electric
- Exterior Common Trash Area
- HVAC
- Bathroom(s)
- Zoning UMU
- Professional Service  
Offices Allowed
- Parking: 16 Surface Spaces for  
De Haro Center Customers

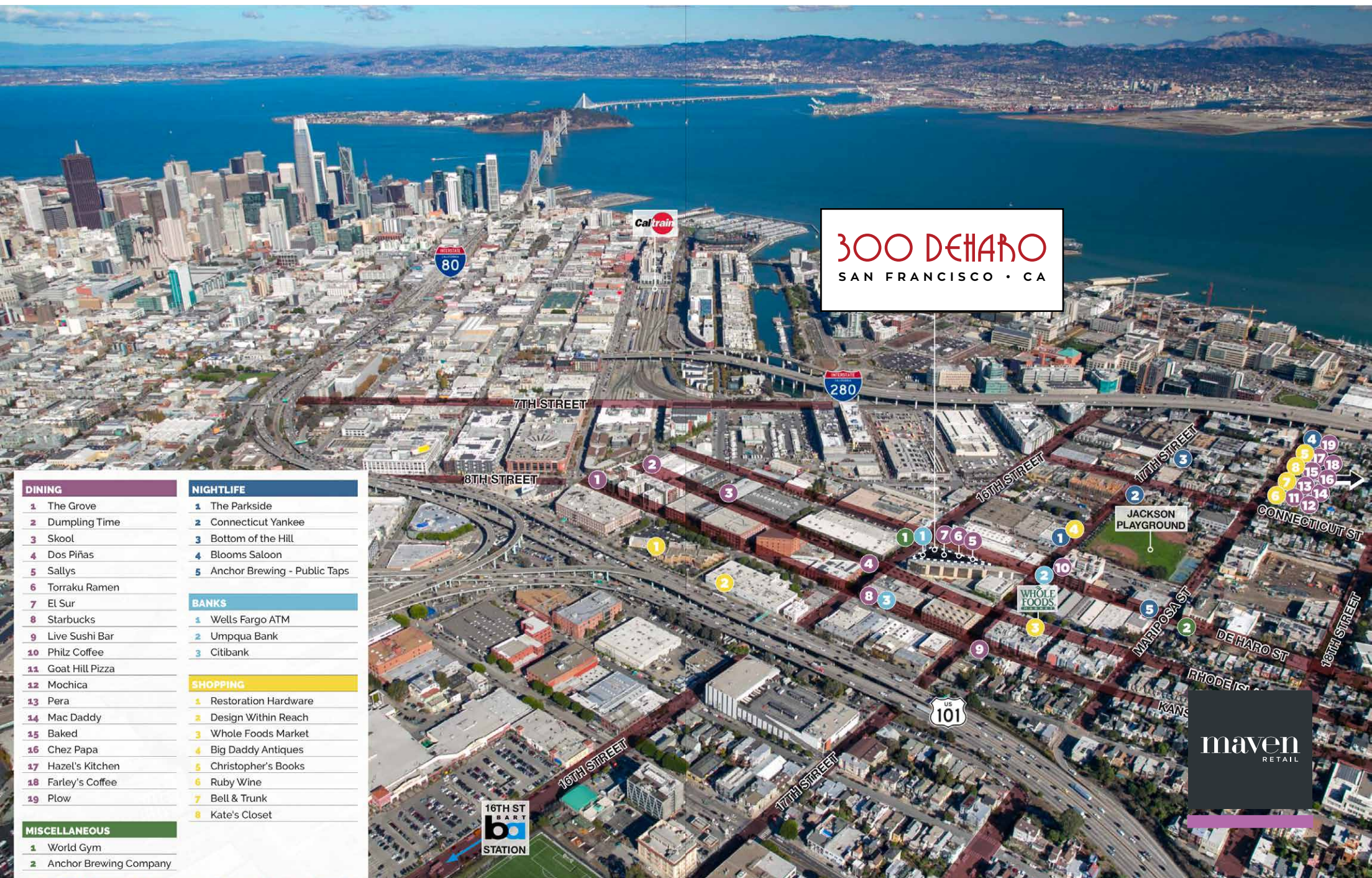












#### DINING

- 1 The Grove
- 2 Dumpling Time
- 3 Skool
- 4 Dos Piñas
- 5 Sallys
- 6 Toraku Ramen
- 7 El Sur
- 8 Starbucks
- 9 Live Sushi Bar
- 10 Philz Coffee
- 11 Goat Hill Pizza
- 12 Mochica
- 13 Pera
- 14 Mac Daddy
- 15 Baked
- 16 Chez Papa
- 17 Hazel's Kitchen
- 18 Farley's Coffee
- 19 Plow

#### NIGHTLIFE

- 1 The Parkside
- 2 Connecticut Yankee
- 3 Bottom of the Hill
- 4 Blooms Saloon
- 5 Anchor Brewing - Public Taps

#### BANKS

- 1 Wells Fargo ATM
- 2 Umpqua Bank
- 3 Citibank

#### SHOPPING

- 1 Restoration Hardware
- 2 Design Within Reach
- 3 Whole Foods Market
- 4 Big Daddy Antiques
- 5 Christopher's Books
- 6 Ruby Wine
- 7 Bell & Trunk
- 8 Kate's Closet

#### MISCELLANEOUS

- 1 World Gym
- 2 Anchor Brewing Company



maven  
RETAIL





# POTRERO HILL





**DOMINIC MORBIDELLI**

office 415.404.7314

[dom@mavenproperties.com](mailto:dom@mavenproperties.com)

BRE #02024348

NOTICE: This information has been secured from sources we believe to be reliable but we make no representations, warranties, express or implied, as to the accuracy of the information. Listing broker has been given enough information to provide only a preliminary interest in the property. The materials are not to be considered fact. The information contained herein is not a substitute for thorough due diligence investigation. References to square footage, zoning, use, or age are approximate. Please contact the San Francisco Planning Department to verify zoning at (415) 558-6378, as neither broker or landlord represent that this space is suitable for your use. Tenant or Buyer must verify the information at their own expense and bears all the risk for any inaccuracies. By receiving these materials you are agreeing to the disclaimers set forth herein. BRE#01878802

---

466 Green Street Suite #203 | San Francisco, CA 94133 | 415.781.7700