



RETAIL

1205 PINE STREET

maven
RETAIL



1205 PINE STREET

Located in the heart of Nob Hill, 1205 Pine Street is a charming commercial space with beautiful natural light, vintage character, and a prime location just steps from the iconic San Francisco cable car line.

Surrounded by classic architecture and neighborhood landmarks like Grace Cathedral, this spot has potential for many uses such as salons, boutique service business, or a wellness studio. With popular restaurants and cafes just around the corner, this space offers unbeatable charm and convenience in one of the city's most historic districts.

PRICING

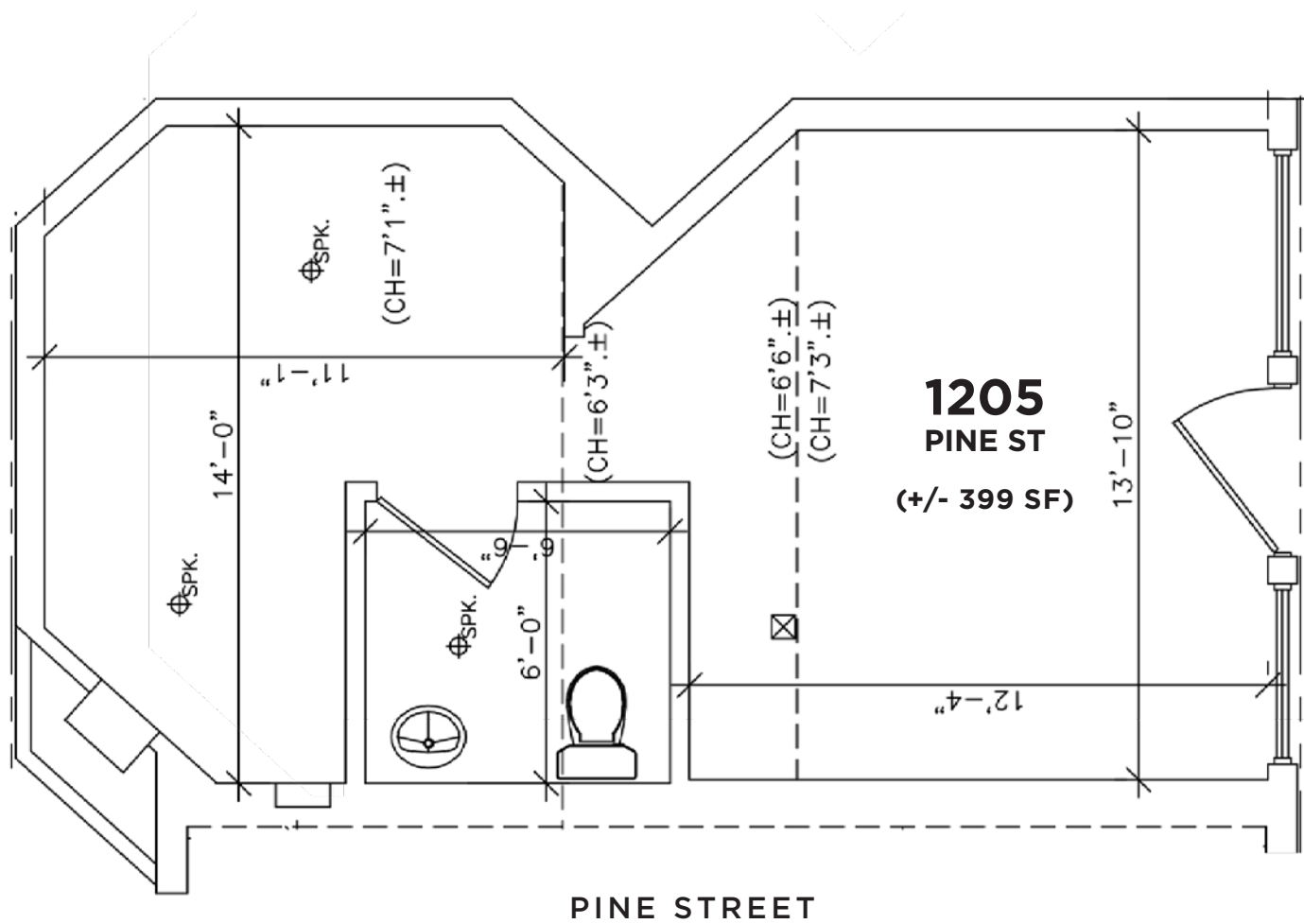
FOR LEASE

\$1,595 / MONTH

FEATURES

- +/- 399 SF
- \$1,595 / month
- Within proximity to cable car line
- Vintage Details
- Natural Lighting
- Attractive Storefront
- High Visibility Location
- Close to MUNI, Hyde out, Trader Joes, Saint Francis Memorial Hospital, and Mayes Oyster House.

FLOOR PLAN







PARALLEL 37



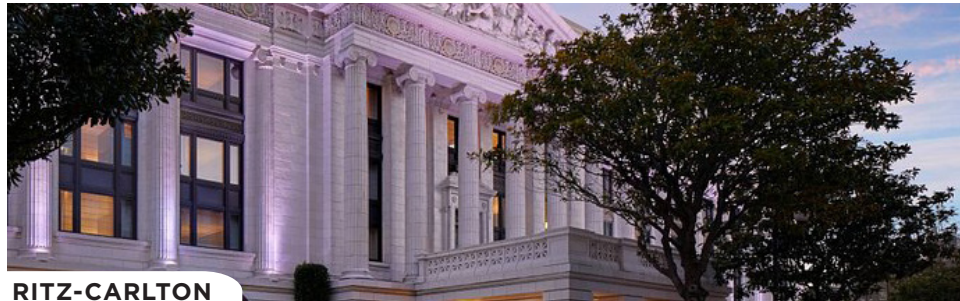
PALI HOTEL



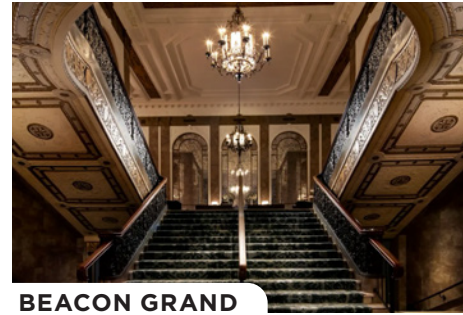
MARK HOPKINS



TOP OF THE MARK



RITZ-CARLTON



BEACON GRAND



FRESH A FLORAL



GRAND HYATT



LAUREL COURT

NOB HILL

1205 Pine Street is located in San Francisco's Nob Hill neighborhood.

Nob Hill is a historic neighborhood located in the heart of San Francisco, just a few blocks from Union Square and Chinatown. Located in the heart of the city, it is known for its luxury hotels, high-end shopping, and stunning views. Nob Hill is home to several luxury hotels including the Fairmont, the Intercontinental Mark Hopkins, the Ritz-Carlton, and many more, each of which hold an important place in San Francisco history. One can also find variety of shops, restaurants, and bars in the neighborhood.



Contact

SAGE MIRSKY

Office 907.821.1049

sage@mavenproperties.com

DRE #02238781

SABRINA BOUCHARD

MARKETING COORDINATOR

Office 775.203.4330

sabrina@mavenproperties.com

NOTICE: This information has been secured from sources we believe to be reliable but we make no representations, warranties, express or implied, as to the accuracy of the information. Listing broker has been given enough information to provide only a preliminary interest in the property. The materials are not to be considered fact. The information contained herein is not a substitute for thorough due diligence investigation. References to square footage, zoning, use, or age are approximate. Please contact the San Francisco Planning Department to verify zoning at (415) 558-6378, as neither broker or landlord represent that this space is suitable for your use. Tenant or Buyer must verify the information at their own expense and bears all the risk for any inaccuracies. By receiving these materials you are agreeing to the disclaimers set forth herein. DRE#01878802

maven
RETAIL

466 Green Street Suite #203

San Francisco, CA 94133

415-781-770

www.mavenproperties.com