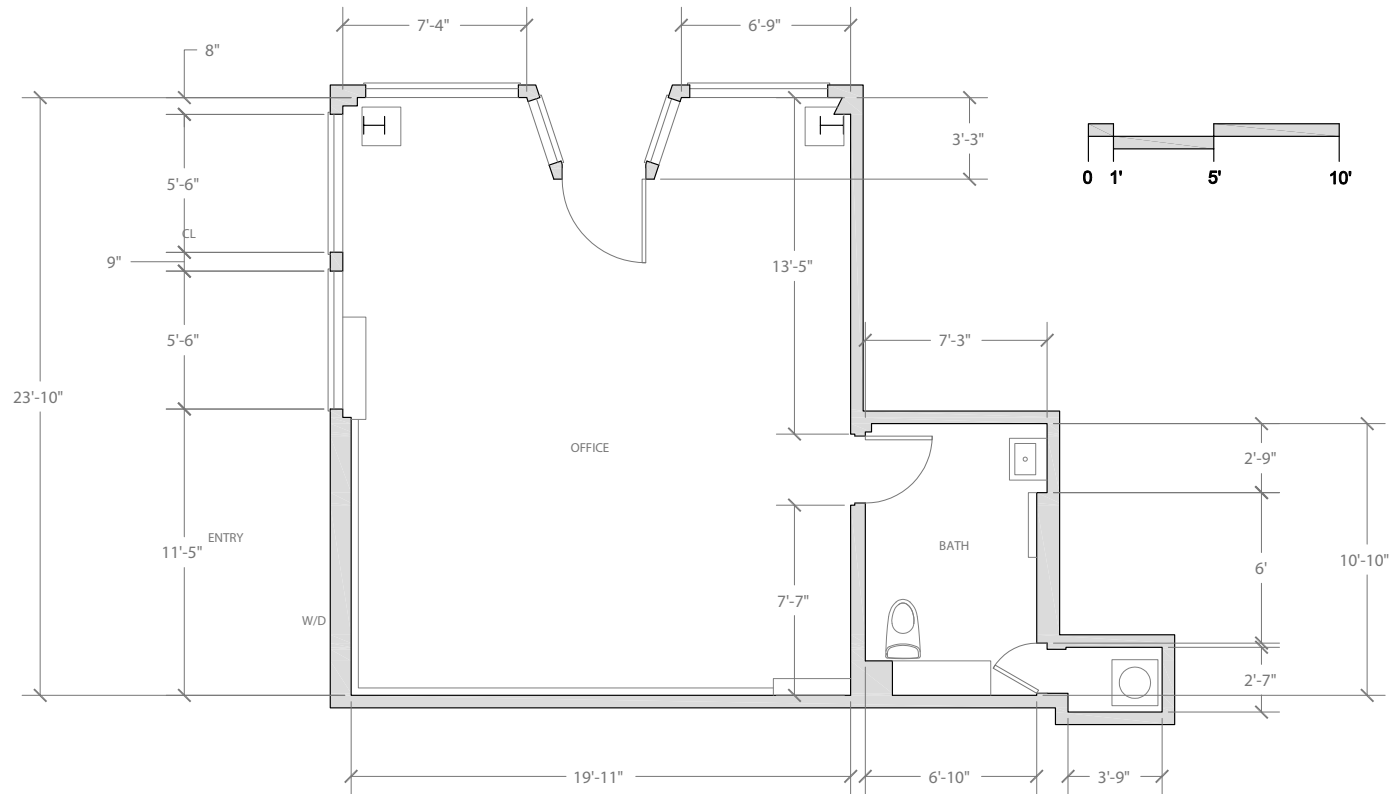


1893
HAYES

maven
RETAIL



FEATURES

- Approximately 625 SF
(Tenant to independently verify square footage)
- 10.5 ft ceiling heights
- Prominent corner location
- Bright space with open floor plan
- New seismic upgrades
- Frontage on both Hayes and Ashbury St.
- \$2,995 per month MG

1893
HAYES



1893 HAYES



1893 HAYES

With Proximity to:

- Golden Gate Park
- City College of San Francisco
- St. Mary's Medical Center
- Haight Street
- Whole Foods Market

1. BARREL HEAD BREWHOUSE
2. BISTRO CENTRAL PARK
3. BISTRO GAMBRINUS
4. AMITIS CAFE
5. THE PANHANDLE
6. WHOLE FOODS MARKET
7. BEND YOGA STUDIO
8. KARMA CAFE
9. UNIVERSITY OF SAN FRANCISCO
10. ST. MARY'S MEDICAL CENTER

1893 HAYES

NEIGHBORHOOD





HALEY KLEIN

office 415.404.7330
haley@mavenproperties.com
BRE #01907308

JOAN RUYLE

office 415.404.7313
joan@mavenproperties.com
BRE #02006025

NOTICE: This information has been secured from sources we believe to be reliable but we make no representations, warranties, express or implied, as to the accuracy of the information. Listing broker has been given enough information to provide only a preliminary interest in the property. The materials are not to be considered fact. The information contained herein is not a substitute for thorough due diligence investigation. References to square footage, zoning, use, or age are approximate. Please contact the San Francisco Planning Department to verify zoning at (415) 558-6378, as neither broker or landlord represent that this space is suitable for your use. Tenant or Buyer must verify the information at their own expense and bears all the risk for any inaccuracies. By receiving these materials you are agreeing to the disclaimers set forth herein. BRE#01878802

466 Green Street Suite #203 | San Francisco, CA 94133 | 415.781.7700