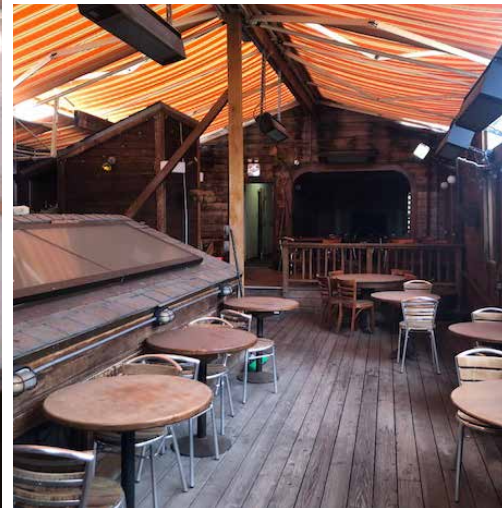
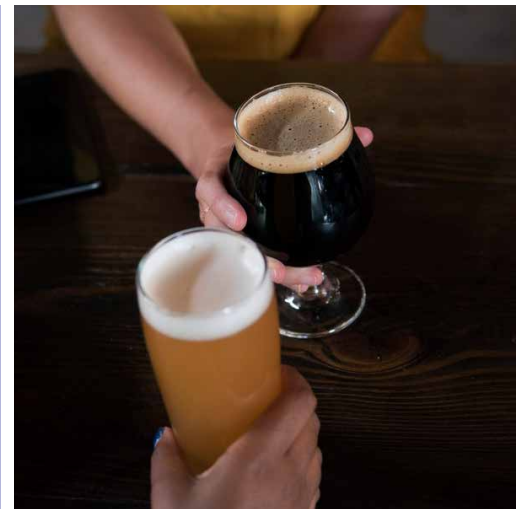




# RETAIL FOR LEASE

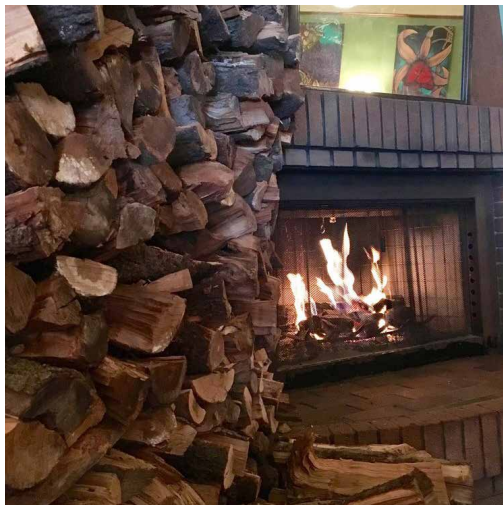
*1240 9th Ave*

SAN FRANCISCO



maven  
RETAIL

- SECOND GENERATION RESTAURANT SPACE
- 2,500 SF GROUND FLOOR + 2,500 SF SECOND FLOOR
- EQUIPMENT IN PLACE
- PATIO SEATING
- EXCELLENT INNER SUNSET LOCATION



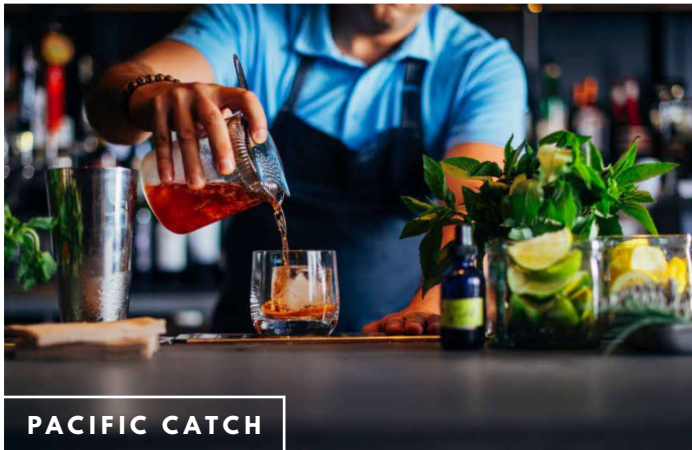


Minutes from Golden Gate Park, de Young Museum, Conservatory of Flowers and Japanese Tea Garden. 1240 9th Avenue is a prime restaurant space located in the quaint Inner Sunset neighborhood. This property has 2,500

SF on the ground floor and 2,500 SF on the second floor. Second generation restaurant with a type 1 hood, outdoor seating, and some equipment in place. Attractive location for a first time or established restaurateur.



## INNER SUNSET



# RETAIL FOR LEASE

*1240 9th Ave*

**SAN FRANCISCO**

**maven**  
RETAIL • OFFICE • INDUSTRIAL

**SARAH BRET SCHWARTZ**  
office 415.404.6959  
sarah@mavenproperties.com  
BRE #01903152

**PAM MENDELSON**  
office 415.404.6650  
pam@mavenproperties.com  
BRE #00953050

**ROSA LEE**  
office 415.404.7340  
rosa@mavenproperties.com  
BRE #02057293

NOTICE: This information has been secured from sources we believe to be reliable but we make no representations, warranties, express or implied, as to the accuracy of the information. Listing broker has been given enough information to provide only a preliminary interest in the property. The materials are not to be considered fact. The information contained herein is not a substitute for thorough due diligence investigation. References to square footage, zoning, use, or age are approximate. Please contact the San Francisco Planning Department to verify zoning at (415) 558-6378, as neither broker or landlord represent that this space is suitable for your use. Tenant or Buyer must verify the information at their own expense and bears all the risk for any inaccuracies. By receiving these materials you are agreeing to the disclaimers set forth herein. BRE#01878802

466 Green Street Suite #203 | San Francisco, CA 94133 | 415.781.7700