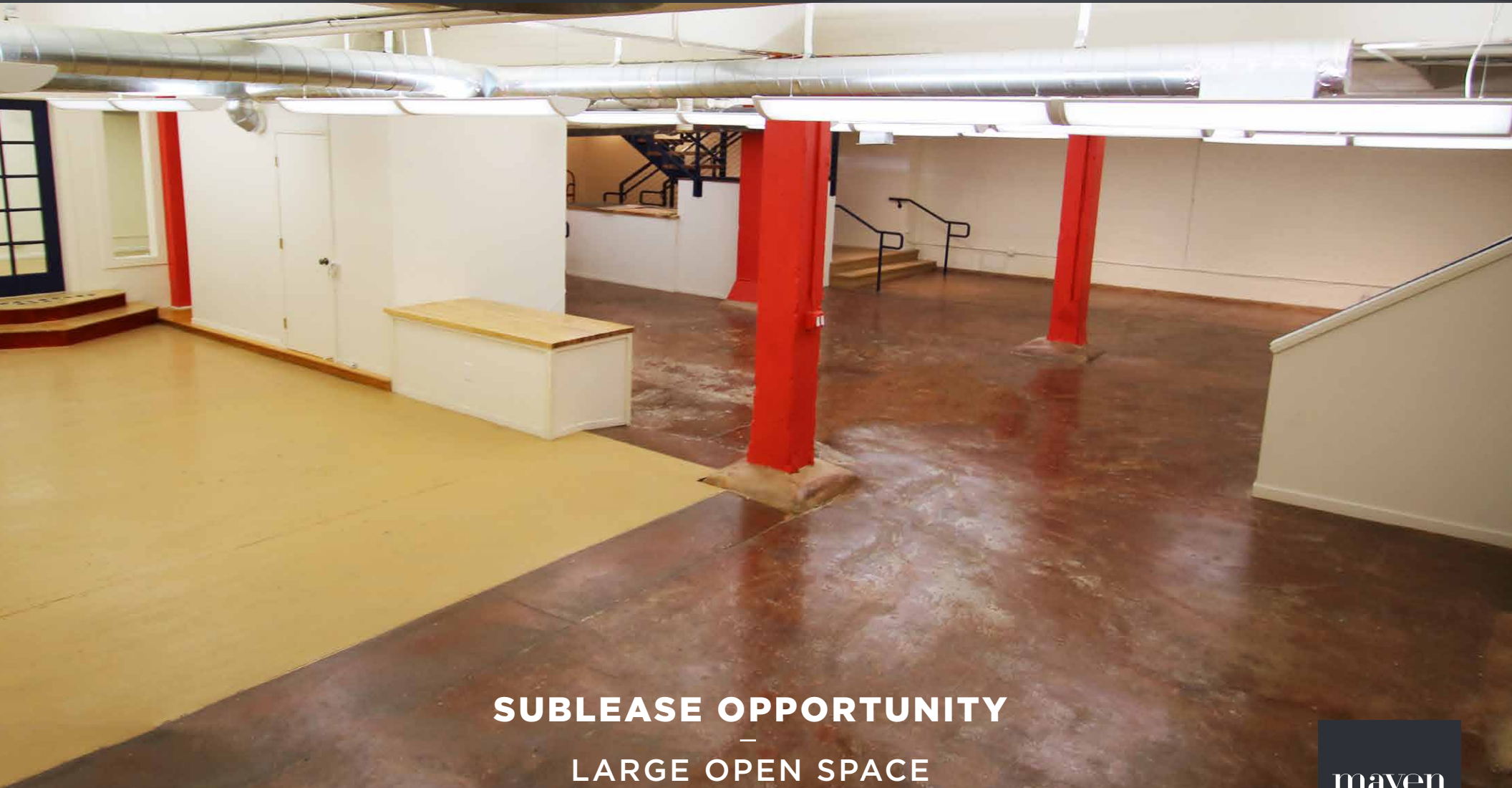


2503 BRYANT ST.

SAN FRANCISCO, CA



SUBLEASE OPPORTUNITY

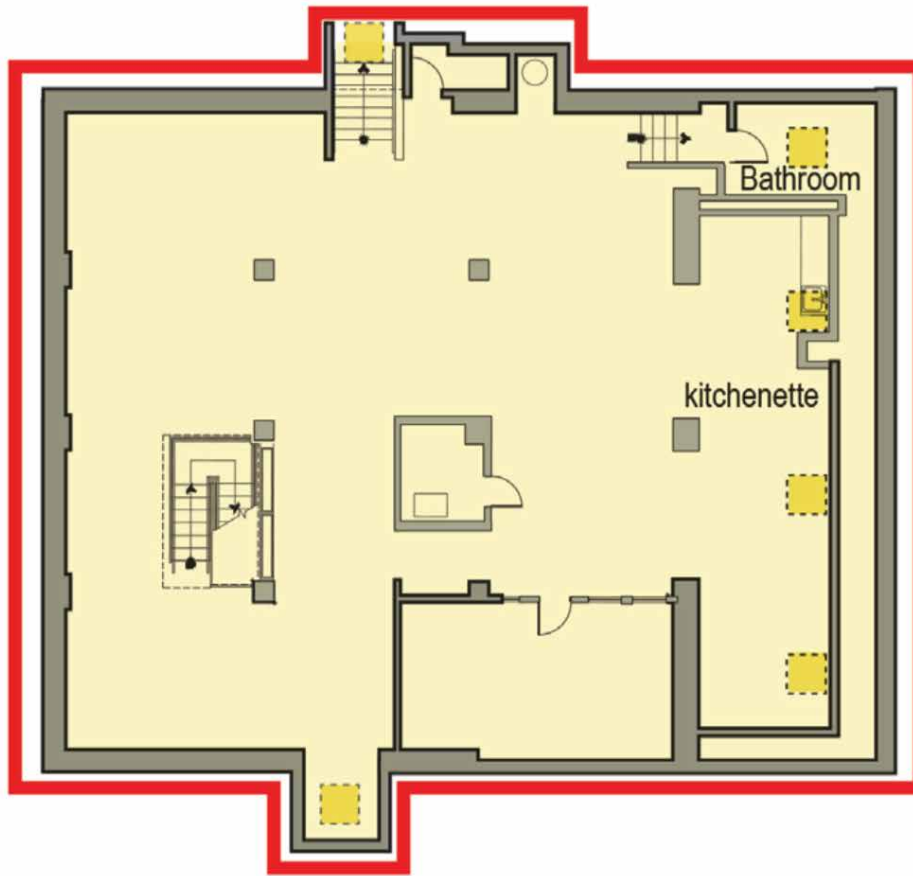
LARGE OPEN SPACE

SUITABLE FOR CREATIVE OFFICE, WORKSHOP, FITNESS, YOGA, SPA,
TRADESHOP, PROFESSIONAL SERVICES, MEDIA/MUSIC FACILITY

LOWER LEVEL COMMERCIAL STARTING AT \$1.75 PSF

maven
RETAIL





Skylight

FLOORPLAN

Lower Level

FEATURES

- +/- 3,030 SF
- Sublease Term 1-5 Years
- Recently upgraded space including upgraded bathroom, lighting, and kitchenette
- 6 skylights for a pleasant work environment
- Architecturally significant building in an excellent location
- Open floor plan with perimeter conference room
- High Ceilings
- Polished Concrete Floors
- Parking Nearby

DOWNTOWN/SOMA

SAN FRANCISCO GENERAL HOSPITAL

23RD STREET

BRYANT STREET

23RD STREET

BRYANT STREET



23RD STREET



WUWU
BUS LINES

27 9 90
33 48

maven
RETAIL



2503
BRYANT ST.

**SF GENERAL
HOSPITAL**

POTRERO AVENUE

BRYANT STREET

24TH STREET

23RD STREET

23RD STREET

24TH STREET

MISSION FLAVOR

Eclectic blend of tech, art, and culture

Ground zero for new restaurants and pop-ups

Incredibly walkable and bike-friendly

Numerous lounges, clubs & entertainment venues

Colorful hispanic heritage – food, parades, and more

Sunniest microclimate in San Francisco!



2503 BRYANT ST.

SUBLEASE OPPORTUNITY

LARGE OPEN SPACE

SUITABLE FOR CREATIVE OFFICE, WORKSHOP, FITNESS, YOGA, SPA,
TRADESHOP, PROFESSIONAL SERVICES, MEDIA/MUSIC FACILITY

LOWER LEVEL COMMERCIAL STARTING AT \$1.75 PSF



CONFERENCE ROOM

maven
RETAIL • OFFICE • INDUSTRIAL

DOMINIC MORBIDELLI

415.404.7314

dom@mavenproperties.com

BRE #02024348

SANTINO DEROSE

415.404.7337

sd@mavenproperties.com

BRE #01338326

JOAN RUYLE

415.404.7313

joan@mavenproperties.com

BRE #02006025

HALEY KLEIN

415.404.7330

halley@mavenproperties.com

BRE #01907308

NOTICE: This information has been secured from sources we believe to be reliable but we make no representations, warranties, express or implied, as to the accuracy of the information. Listing broker has been given enough information to provide only a preliminary interest in the property. The materials are not to be considered fact. The information contained herein is not a substitute for thorough due diligence investigation. References to square footage, zoning, use, or age are approximate. Please contact the San Francisco Planning Department to verify zoning at (415) 558-6378, as neither broker or landlord represent that this space is suitable for your use. Tenant or Buyer must verify the information at their own expense and bears all the risk for any inaccuracies. By receiving these materials you are agreeing to the disclaimers set forth herein. BRE#01878802

466 Green Street Suite #203 | San Francisco, CA 94133 | 415.781.7700