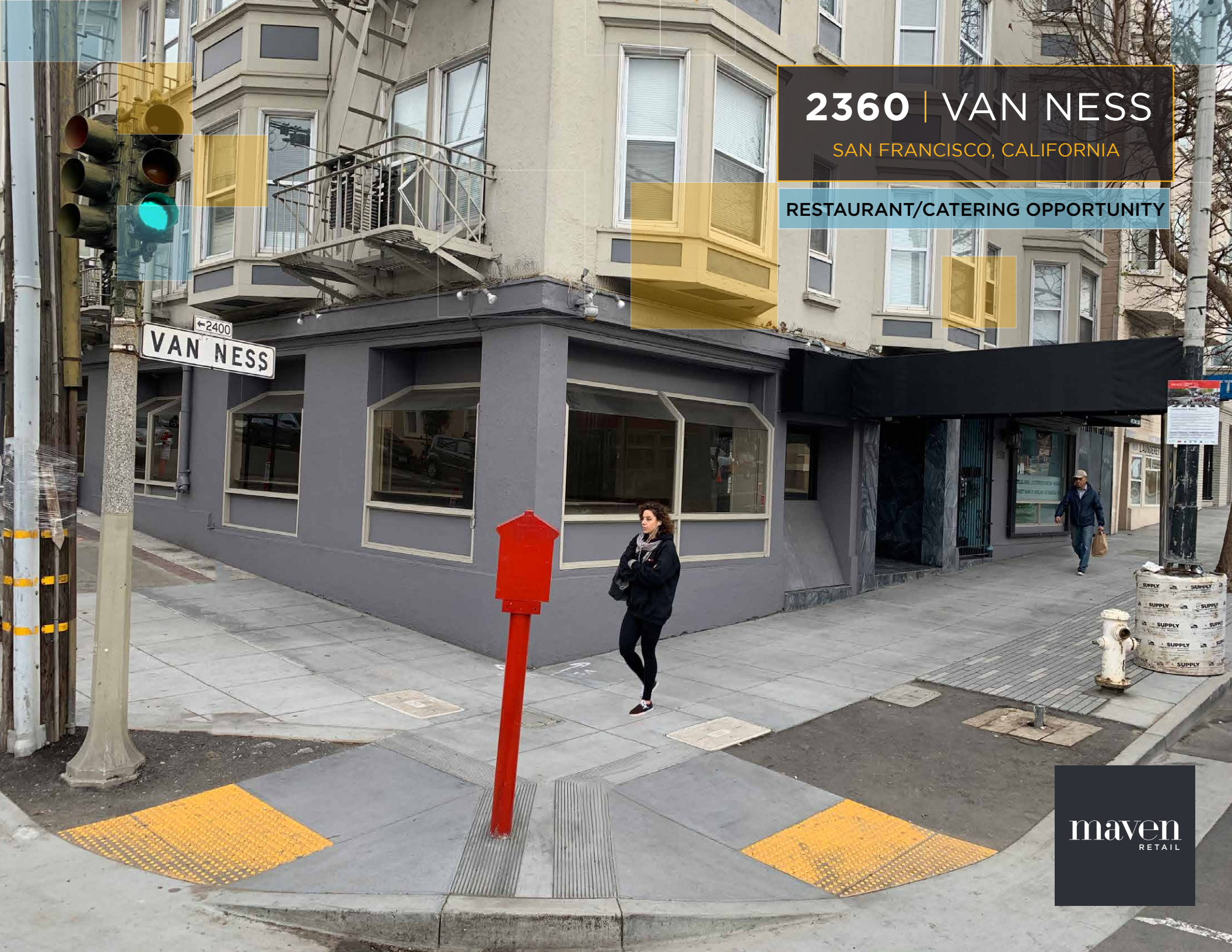


**2360 | VAN NESS**

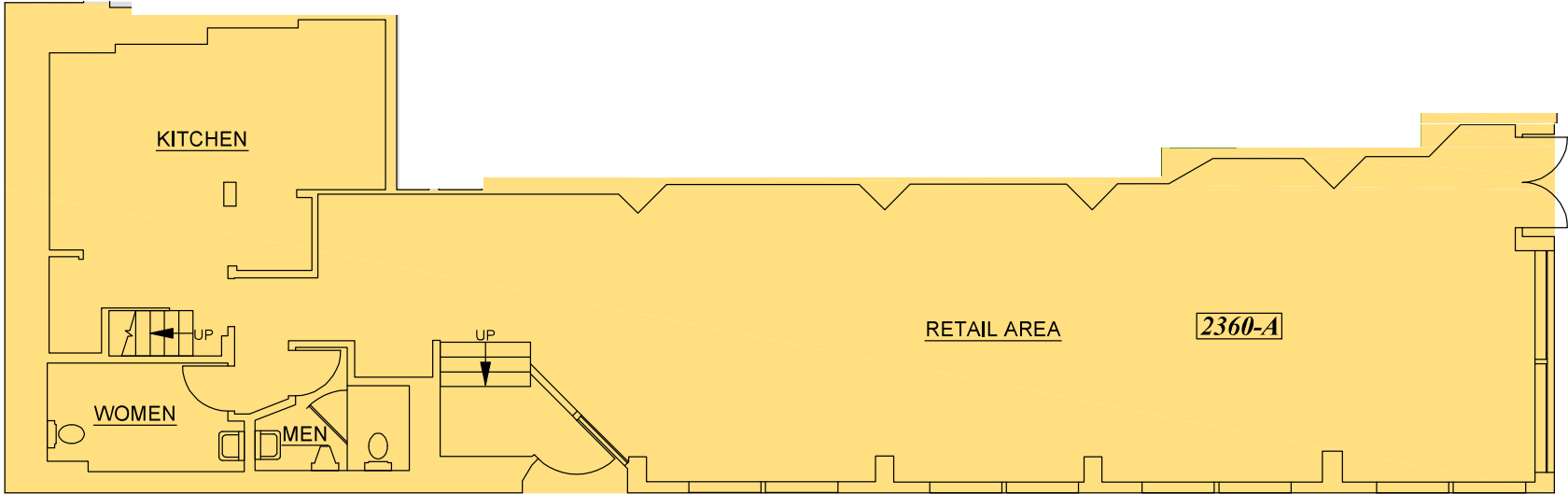
SAN FRANCISCO, CALIFORNIA

RESTAURANT/CATERING OPPORTUNITY



**maven**  
RETAIL





## FEATURES

- +/- 1,757 SF
- Second Generation Restaurant/Bar
- High Visibility Corner
- High Ceilings
- Existing Hood in Place
- Supportive Landlord
- Close to Public Transportation
- Existing Businesses Include Blue Barn, St. Frank, La Folie, Cole Hardware, Crunch Fitness and more

## FEATURES AND MAP



BLUE BARN



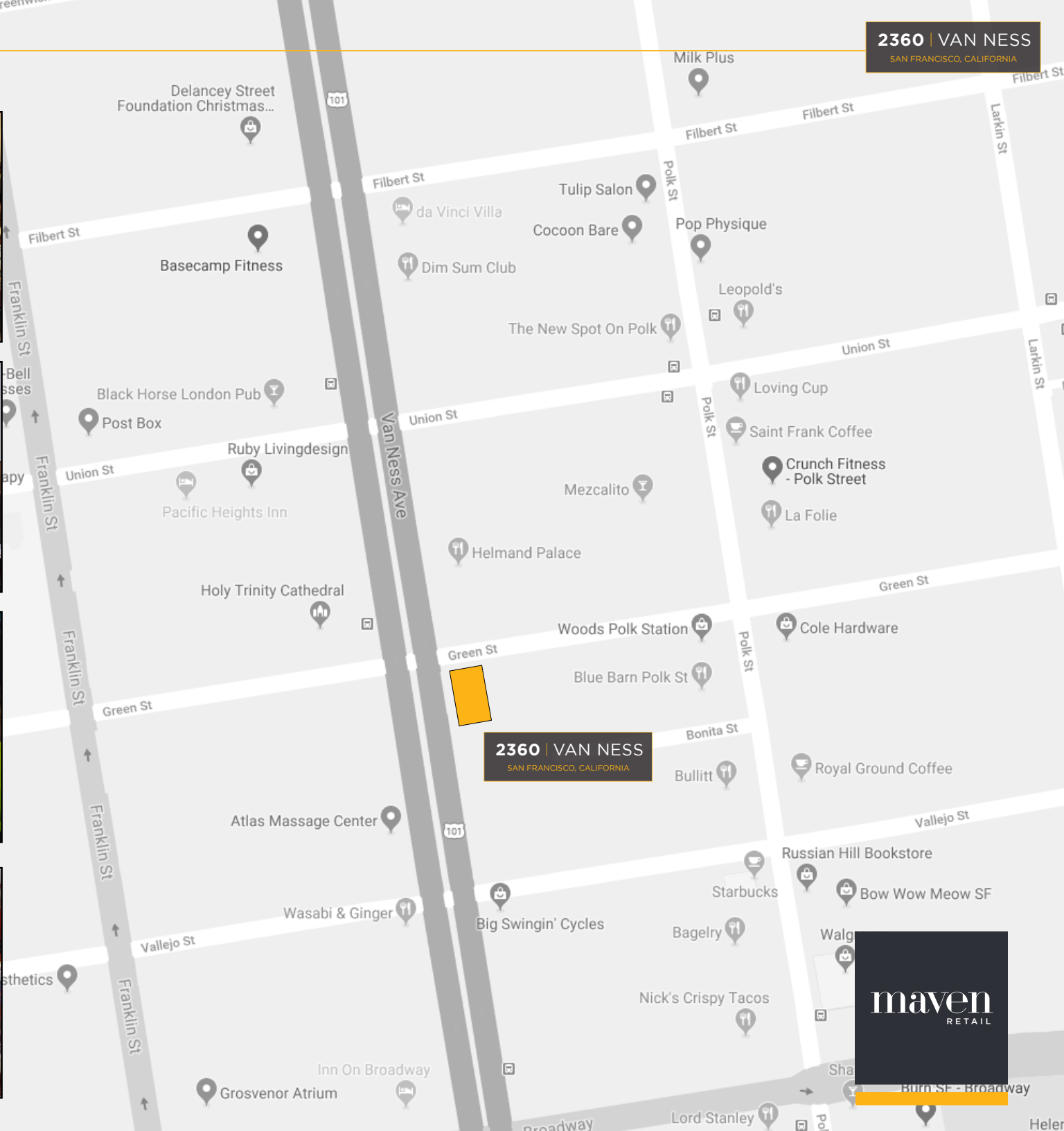
ST. FRANK



CRUNCH FITNESS



BIG SWINGIN' CYCLES



2360 | VAN NESS

SAN FRANCISCO, CALIFORNIA

2360 | VAN NESS

SAN FRANCISCO, CALIFORNIA

maven  
RETAIL



**2360 | VAN NESS**

SAN FRANCISCO, CALIFORNIA

**maven**  
RETAIL • OFFICE • INDUSTRIAL

**JOAN RUYLE**

office 415.404.7313

joan@mavenproperties.com

DRE #02006025

**HALEY KLEIN**

415.404.7330

haley@mavenproperties.com

DRE #01907308

**SANTINO DEROSE**

office 415.404.7337

sd@mavenproperties.com

DRE #01338326

NOTICE: This information has been secured from sources we believe to be reliable but we make no representations, warranties, express or implied, as to the accuracy of the information. Listing broker has been given enough information to provide only a preliminary interest in the property. The materials are not to be considered fact. The information contained herein is not a substitute for thorough due diligence investigation. References to square footage, zoning, use, or age are approximate. Please contact the San Francisco Planning Department to verify zoning at (415) 558-6378, as neither broker or landlord represent that this space is suitable for your use. Tenant or Buyer must verify the information at their own expense and bears all the risk for any inaccuracies. By receiving these materials you are agreeing to the disclaimers set forth herein. BRE#01878802

**466 Green Street Suite #203 | San Francisco, CA 94133 | 415.781.7700**