

# 3591 20<sup>TH</sup> STREET

SAN FRANCISCO, CALIFORNIA





# 3591 20<sup>TH</sup> STREET

SAN FRANCISCO, CALIFORNIA



**3591 20th Street** occupies one of the most coveted spots in San Francisco's vibrant Mission District, a neighborhood known for its lively restaurant scene, as well as a fast-growing retail component. Valencia Street in particular is a hot destination for artists, young professionals and other trendsetters, and this space is around the corner from Valencia, just steps from Craftsman and Wolves, Chrome Bags, The Chapel, Mission Cheese, Range, Tacolicious, Self Edge, and many other thriving local businesses.

## DETAILS:

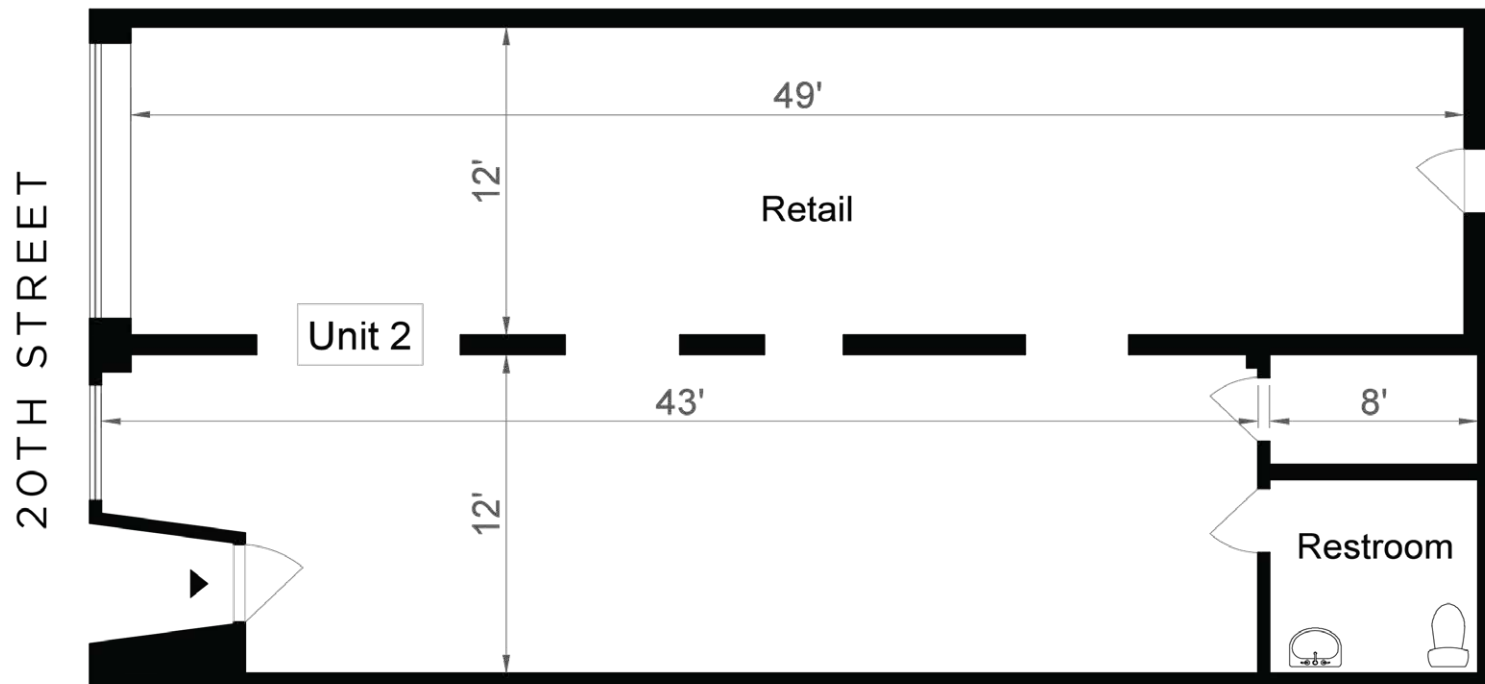
Approx. 1,250 SF  
No venting  
Potential for liquor license purchase  
Great location off Valencia



20th STREET	
901	Soon to be Restaurant
907	
911	Baggu
923	Consumer Auto Body
951	Xanath Ice Cream
963	Synergy
973	Tiger Lily
977	Angelica's Hair Salon
983	Herbivore the Earthly Grill
985	Eco Wash and Fold
995	Dosa
999	Valencia Whole Foods
21st STREET	

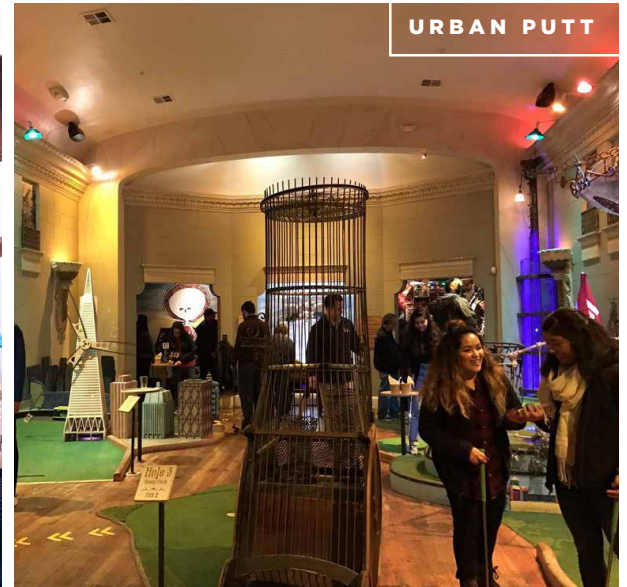
maven  
RETAIL

3591  
**20<sup>TH</sup> STREET**  
SAN FRANCISCO, CALIFORNIA





3591  
20<sup>TH</sup> STREET  
SAN FRANCISCO, CALIFORNIA



maven  
RETAIL

# 3591 20<sup>TH</sup> STREET

SAN FRANCISCO, CALIFORNIA

**maven**  
RETAIL • OFFICE • INDUSTRIAL

**SARAH BRETT SCHWARTZ**  
office 415.404.6959  
sarah@mavenproperties.com  
BRE #01903152

**PAM MENDELSON**  
office 415.404.6650  
pam@mavenproperties.com  
BRE #00953050

**ROSA LEE**  
office 415.404.7340  
rosa@mavenproperties.com  
BRE #02057293

NOTICE: This information has been secured from sources we believe to be reliable but we make no representations, warranties, express or implied, as to the accuracy of the information. Listing broker has been given enough information to provide only a preliminary interest in the property. The materials are not to be considered fact. The information contained herein is not a substitute for thorough due diligence investigation. References to square footage, zoning, use, or age are approximate. Please contact the San Francisco Planning Department to verify zoning at (415) 558-6378, as neither broker or landlord represent that this space is suitable for your use. Tenant or Buyer must verify the information at their own expense and bears all the risk for any inaccuracies. By receiving these materials you are agreeing to the disclaimers set forth herein. BRE#01878802

466 Green Street Suite #203 | San Francisco, CA 94133 | 415.781.7700