

2130

3RD STREET

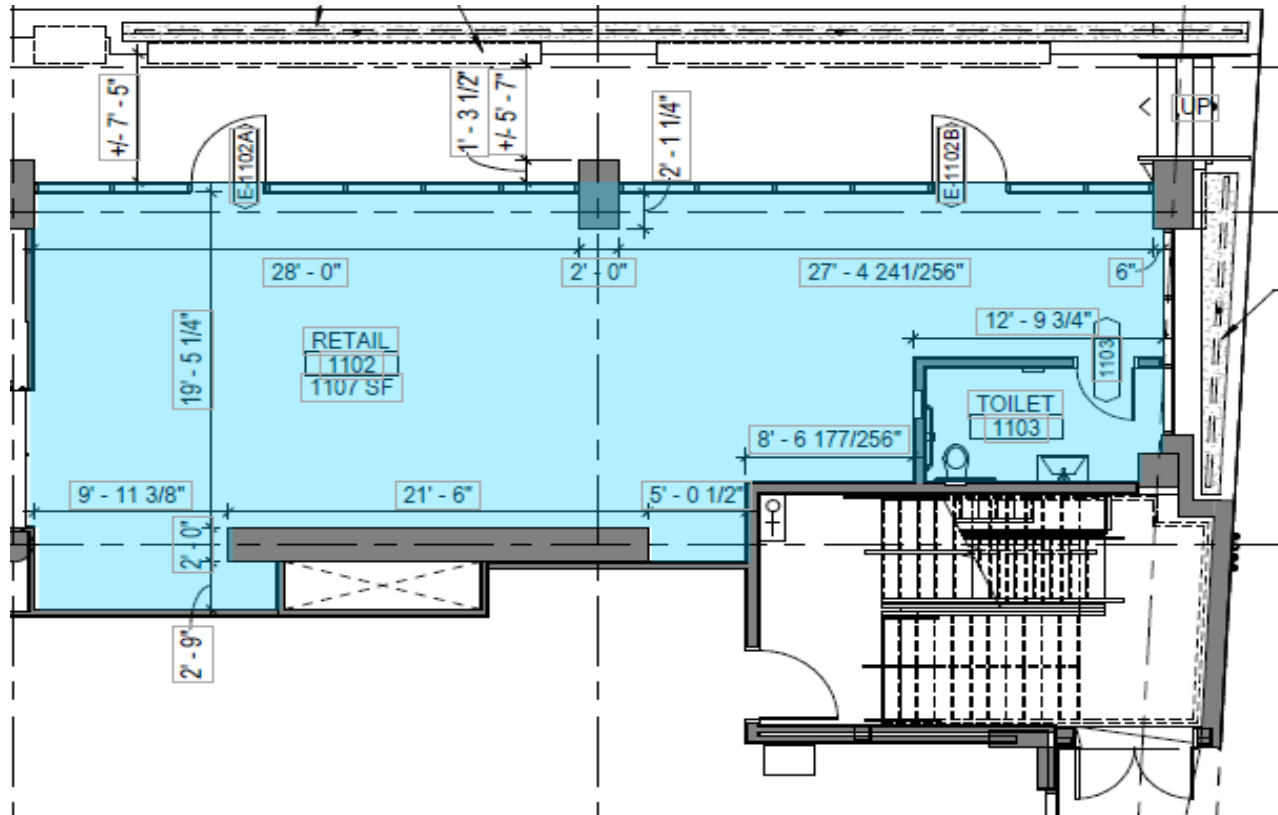
DOGPATCH CAFE FOR LEASE

PART OF UCSF DEVELOPMENT



FEATURES

- Approx. 1,100 SF
- 2019 Development / Part of UCSF project
- Great Dogpatch location
- Interior ingress from UCSF grounds
- Exterior ingress from 3rd Street
- Outdoor seating potential
- Attractive lease terms



STEM KITCHEN & GARDEN



MOSHI MOSHI



TRIPLE VOODOO BREWING



THIRD RAIL



RICKSHAW BAGWORKS



PICCINO



PHILZ COFFEE



2130 | 3RD



MISSION ROCK RESORT



THE RAMP



NEIGHBOR BAKEHOUSE



JUST FOR YOU CAFE



SERPENTINE



MR. AND MRS. MISCELLANEOUS



MUSEUM OF CRAFT AND DESIGN





DOGPATCH



2130

3RD STREET

DOGPATCH RETAIL FOR LEASE

maven
RETAIL • OFFICE • INDUSTRIAL

SARAH BRETT SCHWARTZ
office 415.404.6959
sarah@mavenproperties.com
DRE #01903152

PAM MENDELSONN
office 415.404.6650
pam@mavenproperties.com
DRE #00953050

NOTICE: This information has been secured from sources we believe to be reliable but we make no representations, warranties, express or implied, as to the accuracy of the information. Listing broker has been given enough information to provide only a preliminary interest in the property. The materials are not to be considered fact. The information contained herein is not a substitute for thorough due diligence investigation. References to square footage, zoning, use, or age are approximate. Please contact the San Francisco Planning Department to verify zoning at (415) 558-6378, as neither broker or landlord represent that this space is suitable for your use. Tenant or Buyer must verify the information at their own expense and bears all the risk for any inaccuracies. By receiving these materials you are agreeing to the disclaimers set forth herein. DRE#01878802

466 Green Street Suite #203 | San Francisco, CA 94133 | 415.781.7700