



# 1770 & 1780 Fulton San Francisco | CA

NO PA RETAIL SPACES

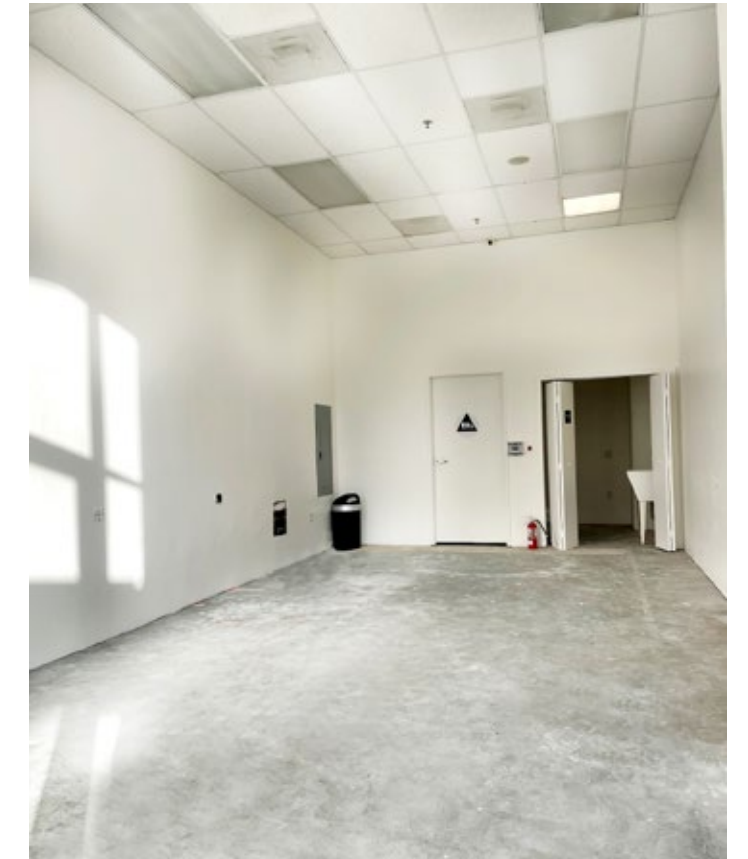
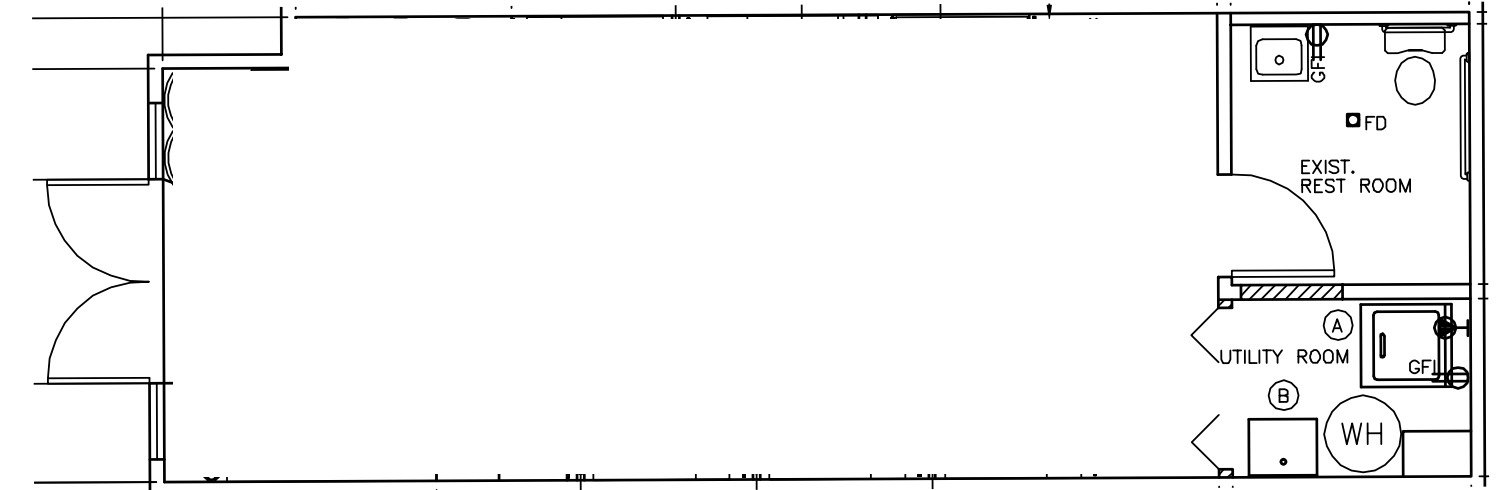
maven  
RETAIL

## Features & Floor Plan

1770 FULTON | SAN FRANCISCO

- +/- 589 SF
- Across the street from the University of San Francisco campus
- Suitable for a variety of retail uses
- Big ceilings and modern finishes
- Excellent visibility
- Large signage opportunity
- Neighbors include Starbucks, Barrelhead Brewery, Papalote, and more

## Floor Plan





## Features & Floor Plans

1780 FULTON | SAN FRANCISCO

- Approximately 1,275 SF
- Former nail salon location
- Existing plumbing and water connection still in place
- Located within a grocery anchored shopping center
- Daily parking for employees and customers
- Close proximity to USF, Target, Haight Street, Golden Gate Park, Starbucks, Barrel Head Brewery, Papalote & more





THE NEIGHBORHOOD .....



AMITIS CAFE



PAPALOTE MEXICAN GRILL



BISTRO CENTRAL PARC



BARREL HEAD BREWHOUSE



SAN FRANCISCO DAY SCHOOL



BISTRO GAMBRINUS



GREEN CHILE KITCHEN



USF



LUCKY



BOB'S ON BAKER STREET



MATCHING HALF



WAR MEMORIAL GYM



# 1770 & 1780 Fulton

## San Francisco | CA

maven  
RETAIL

## Contacts

.....

**HALEY KLEIN**

**office 415.404.7330**

**[haley@mavenproperties.com](mailto:haley@mavenproperties.com)**

**DRE #01907308**

NOTICE: This information has been secured from sources we believe to be reliable but we make no representations, warranties, express or implied, as to the accuracy of the information. Listing broker has been given enough information to provide only a preliminary interest in the property. The materials are not to be considered fact. The information contained herein is not a substitute for thorough due diligence investigation. References to square footage, zoning, use, or age are approximate. Please contact the San Francisco Planning Department to verify zoning at (415) 558-6378, as neither broker or landlord represent that this space is suitable for your use. Tenant or Buyer must verify the information at their own expense and bears all the risk for any inaccuracies. By receiving these materials you are agreeing to the disclaimers set forth herein. DRE#01878802

---

**466 Green Street Suite #203 | San Francisco, CA 94133**  
**415-781-7700 | [www.mavenproperties.com](http://www.mavenproperties.com)**