



RETAIL/RESTAURANT

2238 MARKET STREET

maven
RETAIL



- +/- 2,515 SF (can be demised)
- At the base of a 44-unit upscale residential development
- High visibility location in the Upper Market Street corridor
- Located on the F-Market cable car line that spans from the Waterfront to the Castro
- Excellent visibility
- Tenant improvement package available
- Nearby businesses include Barry's, Epicurean Trader, Starbelly, Fisch & Flore, and more.

FEATURES

The Upper Market / Duboce Triangle neighborhood is blossoming with new residential development, among which is 2238 Market Street, located where the Mission, the Castro, the Haight, and Mid-Market meet. Some of the nearby attractions include Verve Coffee & Tea, Barry's Bootcamp, The Epicurean Trader, and the Cafe Du Nord music venue. 2238 Market offers a great opportunity to add to the neighborhood's brand new vision for retail and dining.

UPPER MARKET

SANCHEZ STREET

Vacant	
Fashion Exchange	2211
Tara Indian Cuisine	2217
Copas	2223
Sui Generis Designer Consignment	2231
One Hour Cleaners	2233
Underglass Custom Picture Framing	2239
European Wax Center	2241
Hi-Tops Bar	2247
Santeria	2251
Bangin Hair Salon	2253
Peet's Coffee	2257
Mail Access	2261
The Castro Barber Lounge	2265
R by ROLO	2267
Sushi Time	2275
Ohm Thai Massage	2275
Alex Fitness	2275
Dinosaurs Sandwiches	2275
Photoworks SF	2279
Former Harvest Ranch	2285
Former Craft Beer	2295

NOE STREET

Fitness SF	2301
Verve Coffee	2301
Stag & Manor	2319
D&H Jewelry	2323
Klein Epstein & Parker	2331
Crystal Way	2335
Zona Rosa Mexican Grill	2337
Wela Thai Massage and Spa	2343
CORE MVMT	2349
Rolo	2351
One Medical: Castro	2355
Former Restaurant	2367
The Café	2369
Chadwick's	2375
Chevron Gas Station	2399

17TH STREET

MARKET STREET

MARKET STREET

MARKET STREET

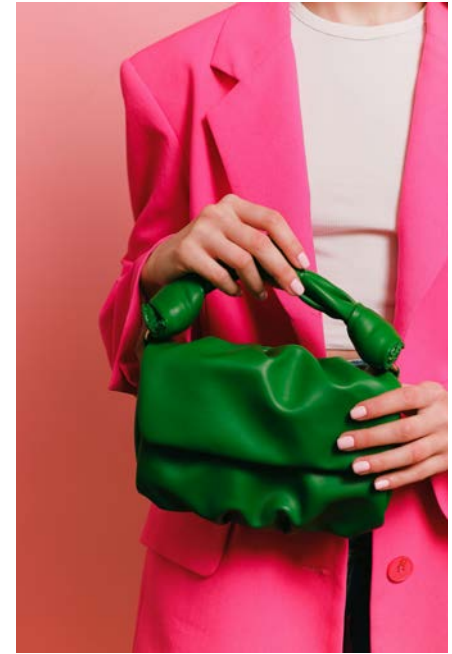
SANCHEZ STREET

2200A	The Detour
2200	Hecho
2200	The Century
	Vacant
2222	Beck's Motor Lodge
2240	Epicurean Trader
★ 2238	MARKET STREET
	Wells Fargo
2264	Chakka Cuts Hair
2262	Walgreens
2272	Canela Bistro/Wine Bar
2280	Barry's Castro
2288	Dignity Health
2298	Former Café Flore Restaurant & Bar

NOE STREET

	Max Muscle
	Lookout (Upstairs)
	Bonita Taqueria
2304	Super Duper Burger
2310	Koheba Smoke Shop
2312	Taco Boys
2324A	Art House SF
2324B	Skin & Body Care by Morgana
2330	Bay Cleaners
2336	MX3 Fitness
2338	Berbix
2344	Beaux Bar & Lounge
2350	Healing Cuts
2352	The diaTribe Foundation
2358	2358MRKT Gallery Space
2362	Catch Restaurant & Bar
2370	H&R Block
2370	Garret Madderra Dentist
2370	The UPS Store
2380	QueenBeeNails
2390	

17TH STREET



WALK/BIKE/TRANSIT SCORE



98

WALK SCORE



94

BIKE SCORE



100

TRANSIT SCORE

BUS LINES: 22, 24, 37

maven
RETAIL



EPICUREAN TRADER



CATRO BARBER LOUNGE



BARRY'S



STARBELLY



MILLAY



KITCHEN STORY



VERVE COFFEE



CHURCHILL

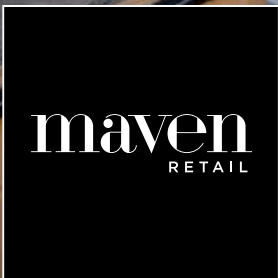


ANCHOR OYSTER BAR

UPPER MARKET

2238 Market is located on a busy corridor in the Upper Market/Duboce Triangle neighborhood.

The Upper Market / Duboce Triangle neighborhood is situated between the bustling streets of Lower Haight, Mission, Castro, and Hayes Valley neighborhoods. Located in the heart of San Francisco, the Upper Market neighborhood offers easy access to local attractions, as well as quick transportation to many of the most well-known San Francisco landmarks. Some of the nearby attractions include Verve Coffee & Tea, Blackbird Bar, and the Cafe Du Nord music venue. 2238 Market Street offers a great opportunity to add to the neighborhood's brand new vision for retail and dining.



Contact

PAMELA MENDELSON

415.404.6650

pam@mavenproperties.com

DRE #00953050

GLORIA NORDBAKK

415.225.0626

gloria@mavenproperties.com

DRE #02207407

SAGE MIRSKY

907.821.1049

sage@mavenproperties.com

DRE #02238781

NOTICE: This information has been secured from sources we believe to be reliable but we make no representations, warranties, express or implied, as to the accuracy of the information. Listing broker has been given enough information to provide only a preliminary interest in the property. The materials are not to be considered fact. The information contained herein is not a substitute for thorough due diligence investigation. References to square footage, zoning, use, or age are approximate. Please contact the San Francisco Planning Department to verify zoning at (415) 558-6378, as neither broker or landlord represent that this space is suitable for your use. Tenant or Buyer must verify the information at their own expense and bears all the risk for any inaccuracies. By receiving these materials you are agreeing to the disclaimers set forth herein. DRE#01878802

466 Green Street Suite #203

San Francisco, CA 94133

415-781-770

www.mavenproperties.com