

1735 - 1751

FULTON

ADJACENT BUILDINGS WITH REAR YARD

CAN BE LEASED SEPARATELY



1735 FULTON | 2,228 SF + REAR YARD

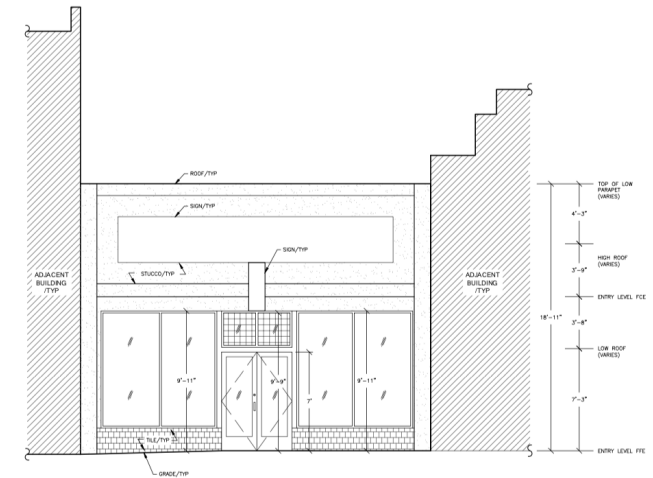
1751 FULTON | 4,279 SF

maven
RETAIL

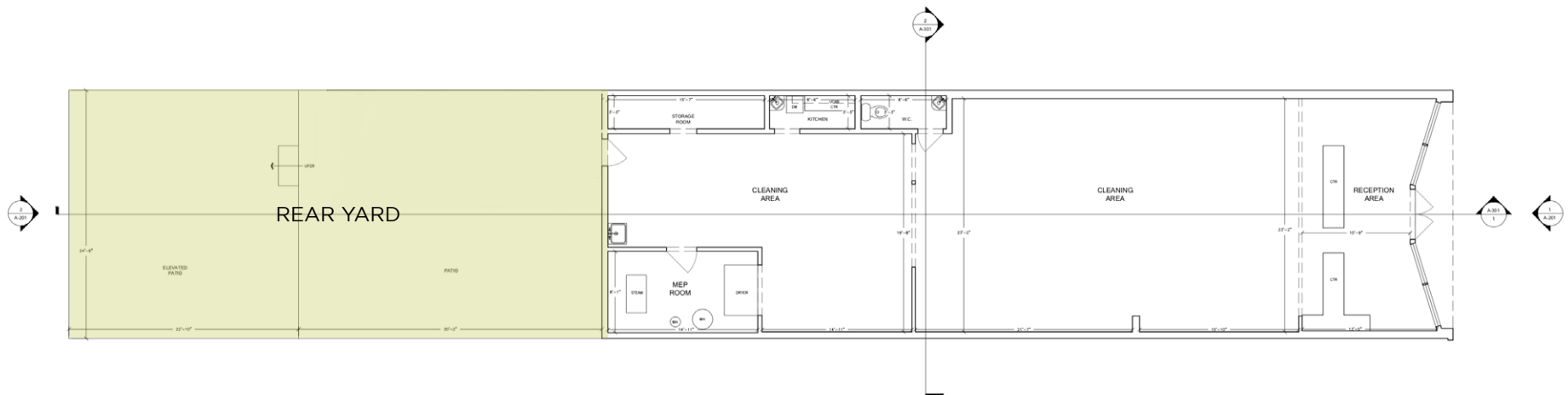


FEATURES

- +/- 2,228 SF
- +/- 1,167 SF rear yard
- Located across from the USF campus
- Open floor plan
- NC-I zoning
- Warm shell delivery possible
- Excellent visibility from the corner of Fulton & Masonic
- Close to public transportation



1 EXISTING NORTH ELEVATION

1 EXISTING ENTRY LEVEL FLOOR PLAN
2,228 SQFT GROSS MEASURED AREA
1,167 SQFT MEASURED EXTERIOR SURFACES

FULTON



FULTON STREET TO GROVE STREET

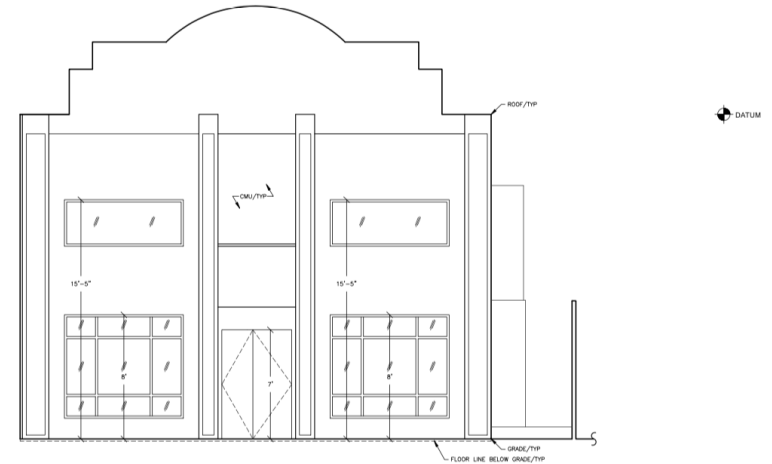
MASONIC AVENUE STREETScape IMPROVEMENTS
BOULEVARD CONCEPT

LEGEND:

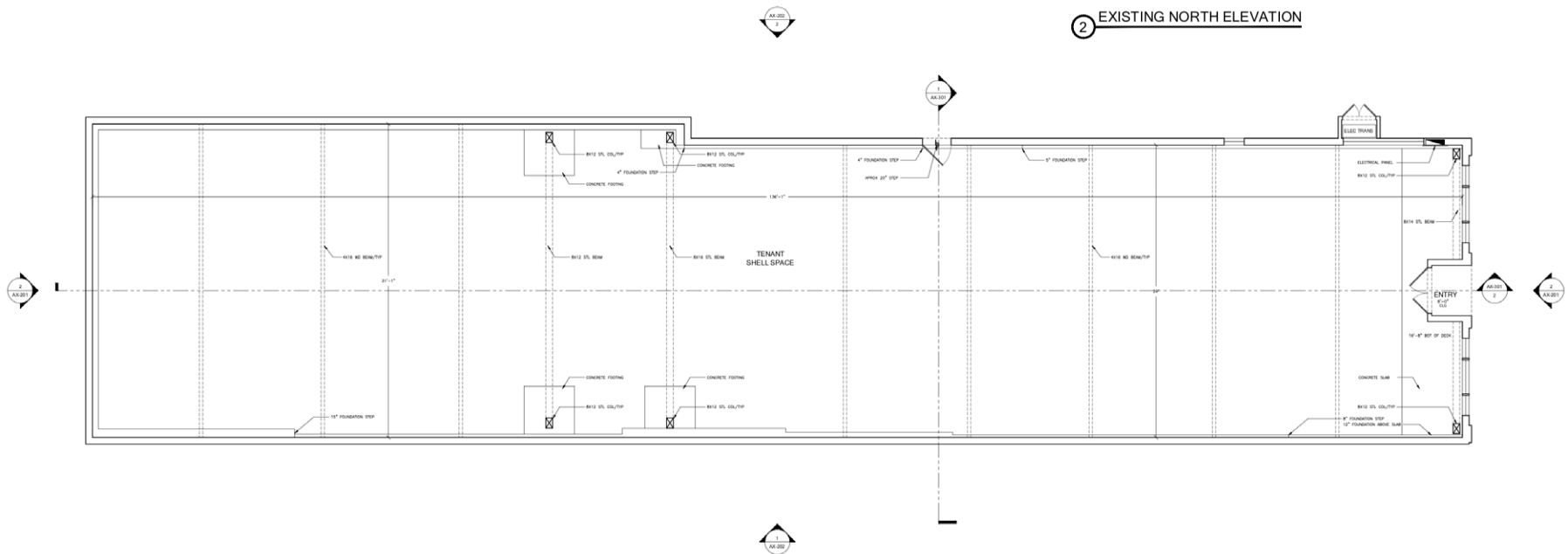
 EXISTING TREE	 NEW STREET LIGHTING AT MEDIAN	 CONCRETE PAVING AT PLAZA
 PROPOSED MEDIAN TREE	 NEW PEDESTRIAN SCALE STREET LIGHTS	 EXISTING PLANTING AREA
 PROPOSED STREET TREE	 EXISTING DRIVEWAY	 PROPOSED PLANTING AREA

FEATURES

- +/- 4,279 SF
- 18 FT + ceilings
- Located across from the USF campus
- NC-I zoning
- Warm shell delivery possible
- Incredible signage and branding opportunity with visibility to Fulton & Masonic
- Close to public transportation



2 EXISTING NORTH ELEVATION

1 EXISTING ENTRY LEVEL FLOOR PLAN
4,279 SQFT GROSS MEASURED AREA

1735 - 1751

FULTON



1735-1751 FULTON

With Proximity to:

- Golden Gate Park
- City College of San Francisco
- St. Mary's Medical Center
- Haight Street
- Whole Foods Market

1. **BARREL HEAD BREWHOUSE**
2. **BISTRO CENTRAL PARK**
3. **BISTRO GAMBRINUS**
4. **AMITIS CAFE**
5. **THE PANHANDLE**
6. **WHOLE FOODS MARKET**
7. **BEND YOGA STUDIO**
8. **KARMA CAFE**
9. **UNIVERSITY OF SAN FRANCISCO**
10. **ST. MARY'S MEDICAL CENTER**

1735 - 1751

FULTON

NEIGHBORHOOD



BARREL HEAD BREWHOUSE



BISTRO CENTRAL PARK



BISTRO GAMBRINUS



GREEN CHILE KITCHEN



THE PANHANDLE



WHOLE FOODS



BEND YOGA STUDIO



KARMA CAFE

1735 - 1751

FULTON

ADJACENT BUILDINGS WITH REAR YARD

CAN BE LEASED SEPARATELY



JOAN RUYLE
office 415.404.7313
joan@mavenproperties.com
BRE #02006025

HALEY KLEIN
415.404.7330
haley@mavenproperties.com
BRE #01907308

SANTINO DEROSE
office 415.404.7337
sd@mavenproperties.com
BRE #01338326

NOTICE: This information has been secured from sources we believe to be reliable but we make no representations, warranties, express or implied, as to the accuracy of the information. Listing broker has been given enough information to provide only a preliminary interest in the property. The materials are not to be considered fact. The information contained herein is not a substitute for thorough due diligence investigation. References to square footage, zoning, use, or age are approximate. Please contact the San Francisco Planning Department to verify zoning at (415) 558-6378, as neither broker or landlord represent that this space is suitable for your use. Tenant or Buyer must verify the information at their own expense and bears all the risk for any inaccuracies. By receiving these materials you are agreeing to the disclaimers set forth herein. BRE#01878802

466 Green Street Suite #203 | San Francisco, CA 94133 | 415.781.7700