



687 MCALLISTER
SAN FRANCISCO | CA

RETAIL/RESTAURANT OPPORTUNITY
+/- 3,337 SF ON GROUND + 5,167 SF BASEMENT

maven
RETAIL

FEATURES

- +/- 3,337 SF Ground Floor
- +/- 5,167 SF Basement
- Former restaurant space in prominent Civic Center/ Hayes Valley location
- Vast ceilings
- Type I venting
- Two exits
- Wide storefront
- Close proximity to BART, MUNI, City Hall, Herbst Theater, Opera House, and more.

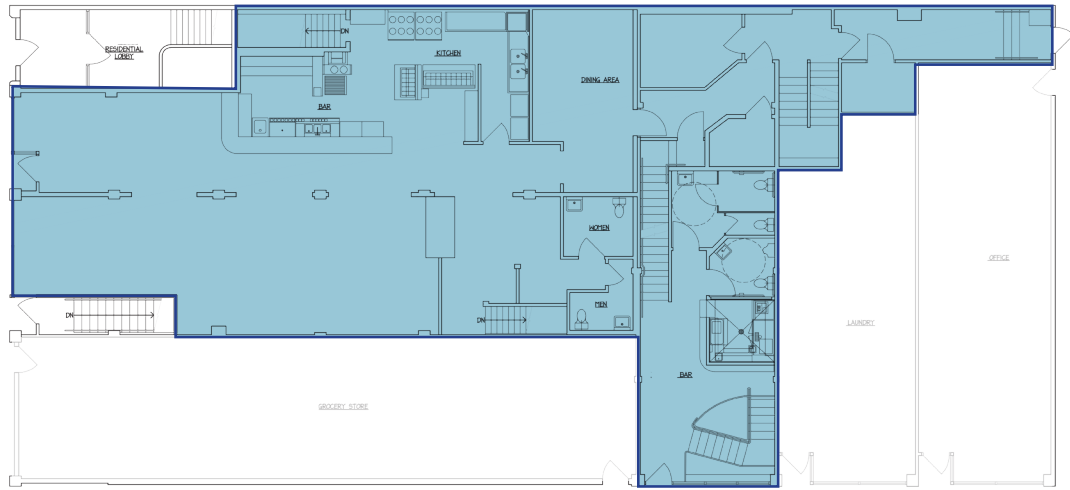
687
MCALLISTER



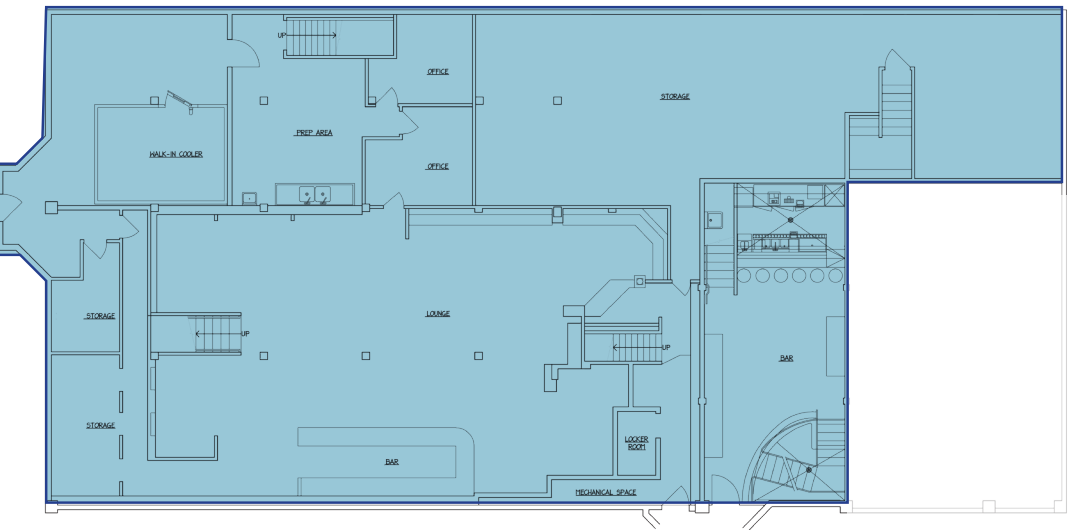


Floorplan

GROUND LEVEL - 3,337 SF



LOWER LEVEL - 5,167 SF



Hayes Valley

Hayes Valley or newly noted as “Cerebral Valley” is a neighborhood in San Francisco known for its vibrant retail scene and epicenter of cutting-edge AI development. The area is known for its diverse mix of independent boutiques, vintage shops, art galleries, and high-end designer stores, housed in historic buildings and Victorian homes that have been repurposed for commercial use. Hayes Valley is a popular destination for locals and tourists alike, who come to explore the unique shopping and dining options in the area. In addition to retail, Hayes Valley is also home to parks, cultural events, and community organizations that contribute to its dynamic atmosphere.



ZUNI CAFÉ



PARACHUTE



CLARE V



MARINE LAYER



AMOUR VERT



CALA



WARBY PARKER



ALLBIRDS



BUCK MASON





maven
RETAIL

HALEY KLEIN

Office 415.404.7330

haley@mavenproperties.com

DRE #01907308

687 MCALLISTER — FOR LEASE

NOTICE: This information has been secured from sources we believe to be reliable but we make no representations, warranties, express or implied, as to the accuracy of the information. Listing broker has been given enough information to provide only a preliminary interest in the property. The materials are not to be considered fact. The information contained herein is not a substitute for thorough due diligence investigation. References to square footage, zoning, use, or age are approximate. Please contact the San Francisco Planning Department to verify zoning at (415) 558-6378, as neither broker or landlord represent that this space is suitable for your use. Tenant or Buyer must verify the information at their own expense and bears all the risk for any inaccuracies. By receiving these materials you are agreeing to the disclaimers set forth herein. DRE#01878802

466 Green Street Suite #203 | San Francisco, CA 94133 | 415-781-7700 | www.mavenproperties.com