



1217

Sutter

san francisco, california

maven  
RETAIL



1217

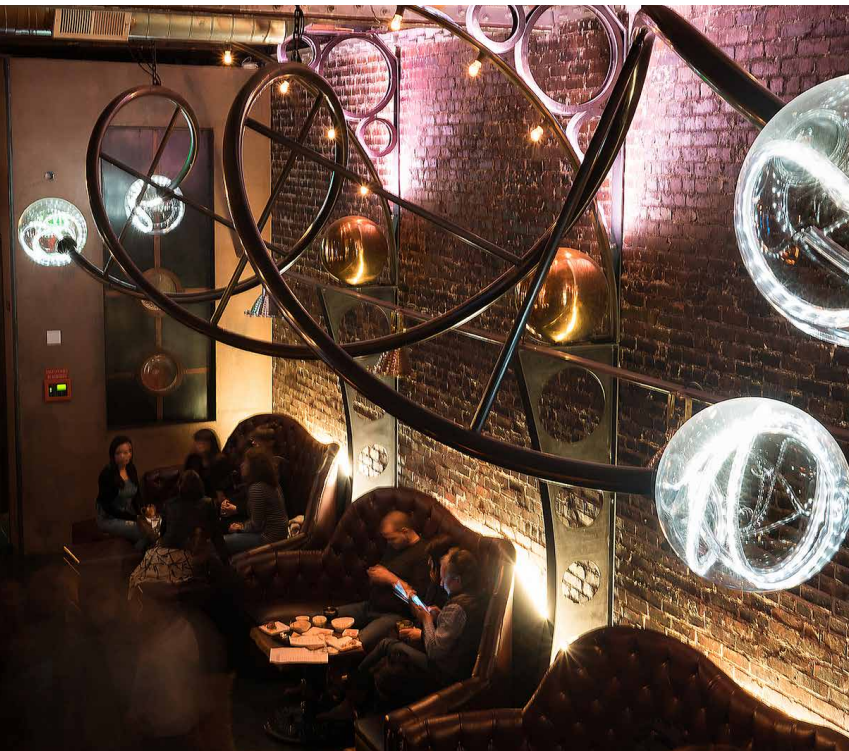
# Sutter

## FEATURES:

- 3,600 SF plus basement
- No key money
- Existing bar and restaurant infrastructure
- Type I Hood/Walk-in Freezers & Refrigeration
- Type 47 liquor license in place
- Exposed brick walls
- Several large skylights
- Attractive building with elegant facade
- Other Tenant Improvements negotiable
- Situated the bustling Polk Steet corridor near other hot spots such as Playland, Hi-Lo Club, R Bar, Mayes, and more

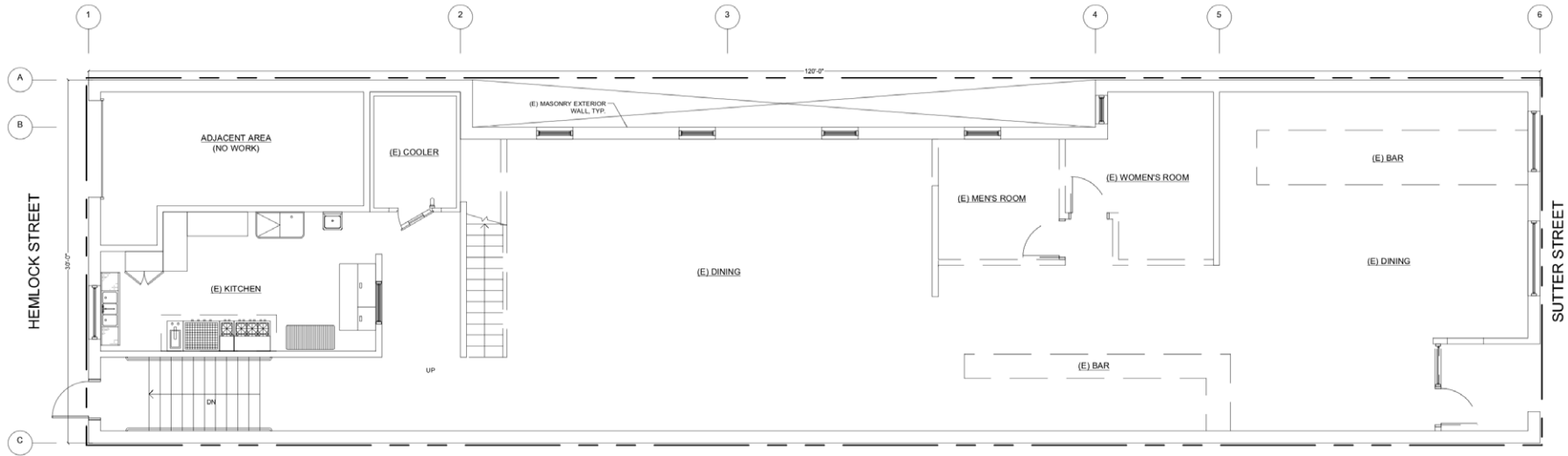


1217  
Sutter



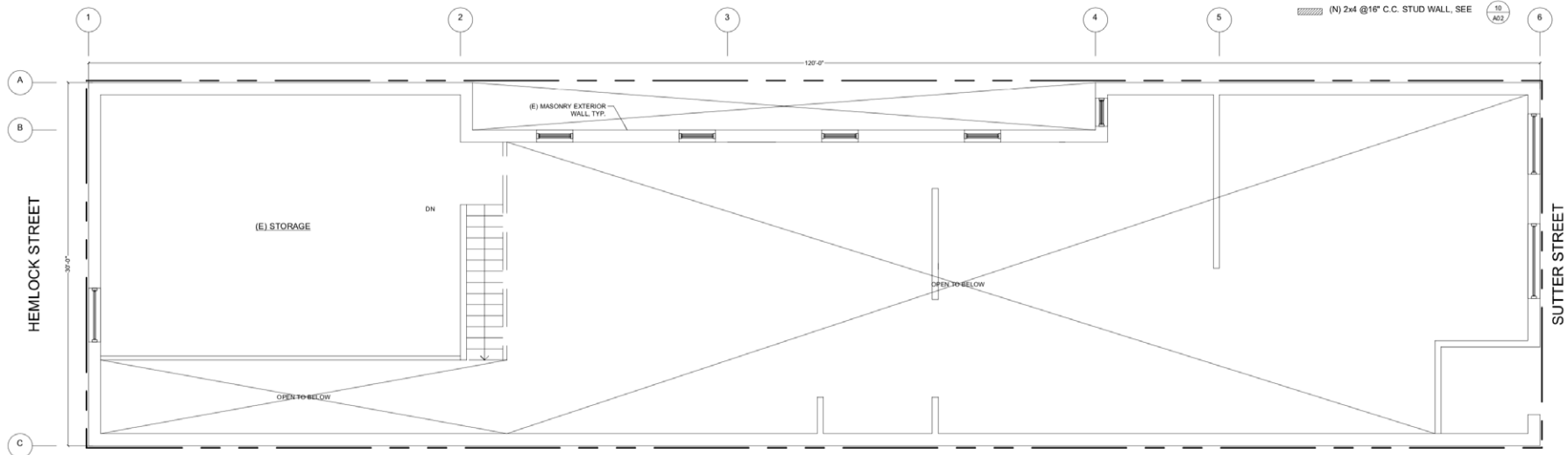


# 1217 Sutter



1 EXISTING GROUND FLOOR PLAN  
1/4" = 1'-0"

LEGEND:  
 (E) WALL  
 (E) TO BE REMOVED  
 (N) 2x4 @16" C.C. STUD WALL, SEE 10 A03



2 EXISTING MEZZANINE PLAN  
1/4" = 1'-0"





### 1525 PINE ST

Net Units: 15  
Net Non-Res SF: -25  
Status: Proposed  
Zoning: NCD

playland  
bar

THE POOR HOUSE  
WINE BAR & BEER LOUNGE



1217  
Sutter

### 1433 BUSH ST

Net Units: 47  
Net Non-Res SF: -4,770  
Status: Planning Entitled  
Zoning: RC-4

GRIST STAIR  
SAN FRANCISCO  
CALIFORNIA

PEOPLES  
BARBER & SHOP

MAYES  
OYSTER HOUSE

### 1238 SUTTER ST

Net Units: 37  
Net Non-Res SF: 0  
Status: Under Construction  
Zoning: RC-4

LUSH LOUNGE

SLIDERS

VERTIGO  
WINE & CIDER

### 1145 POLK ST

Net Units: 54  
Net Non-Res SF: -13,737  
Status: Proposed  
Zoning: NCD

upcider

### 1033 POLK ST

Net Units: 9  
Net Non-Res SF: 0  
Status: Proposed  
Zoning: RC-4



KAMA SUSHI

HEMLOCK

blur

eleven & one

### CPMC HOSPITAL

470,833 SF

maven  
RETAIL

### 1200 VAN NESS AVE

Net Units: 95  
Net Non-Res SF: 38,046  
Status: Proposed  
Zoning: RC-4





# 1217 Sutter



BOB'S DONUTS



SWAN OYSTER DEPOT



AICHA



PEOPLE'S BARBER

maven  
RETAIL

## NEIGHBORHOOD



MR. HOLMES BAKEHOUSE



JACKALOPE



REGENCY BALLROOM



1217

# Sutter

san francisco, california

maven  
RETAIL • OFFICE • INDUSTRIAL

**HALEY KLEIN**

**415.404.7330**

**haley@mavenproperties.com**

**BRE #01907308**

NOTICE: This information has been secured from sources we believe to be reliable but we make no representations, warranties, express or implied, as to the accuracy of the information. Listing broker has been given enough information to provide only a preliminary interest in the property. The materials are not to be considered fact. The information contained herein is not a substitute for thorough due diligence investigation. References to square footage, zoning, use, or age are approximate. Please contact the San Francisco Planning Department to verify zoning at (415) 558-6378, as neither broker or landlord represent that this space is suitable for your use. Tenant or Buyer must verify the information at their own expense and bears all the risk for any inaccuracies. By receiving these materials you are agreeing to the disclaimers set forth herein. BRE#01878802

---

466 Green Street Suite #203 | San Francisco, CA 94133 | 415.781.7700