

# 54 | GEARY

SAN FRANCISCO, CA



maven  
RETAIL





# FEATURES

**54 Geary Street** is a magnificent building in the heart of San Francisco's Union Square district, surrounded by the trappings of the City's booming economy and tourism. Located on one of the most fashionable streets, 54 Geary finds itself sandwiched in between Paul Smith and Alexander McQueen - and only a couple doors down from Acne and Dolce & Gabbana. The property is located at the base of Geary Street, just off of Market Street and in proximity to San Francisco's best hotels.

---

- Single identity building
- 3-level space with luxurious finishes
- Located amongst high profile tenants such as Valentino, Golden Goose, and Vince
- Elegant exterior visible from both Market Street and Grant Avenue

- One block from Neiman Marcus
- Tall display windows
- Heavy foot traffic
- Near BART and public transportation
- Walking distance to San Francisco's Luxury Hotels

---





# 54 | GEARY

SAN FRANCISCO, CA

KEARNY STREET

MARKET STREET

GRANT AVENUE

POST STREET

MAIDEN LANE

GEARY STREET

O'FARRELL STREET

STOCKTON STREET

UNION SQUARE

POWELL STREET

Capital One | jeffrey's toys

Marmot | TSE

Dior | OLIVER PEOPLES

Acne Studios

GOLDEN GOOSE / \*

VINCE.

Paul Smith

54 | GEARY

MONTBLANC

Alexander McQUEEN

GOYARD | BRUNELLO CUCINELLI

DOLCE & GABBANA

HAKKASAN

A.P.C.

ZADIG & VOLTAIRE

Theory

diptyque

VILEBREQUIN

TED BAKER LONDON

BONOBOS

STEVE MADDEN

SCOTCH & SODA

CAROLINA HERRERA NEW YORK

Cartier

FENDI

BURBERRY

TOURBILLON

Maison Margiela

GRAFF

Ray-Ban

ISAIA

HERMES

PINK

GUCCI

JOHNSTON & MURPHY

SUITSUPPLY

CHANEL

JIMMY CHOO

LA PERLA

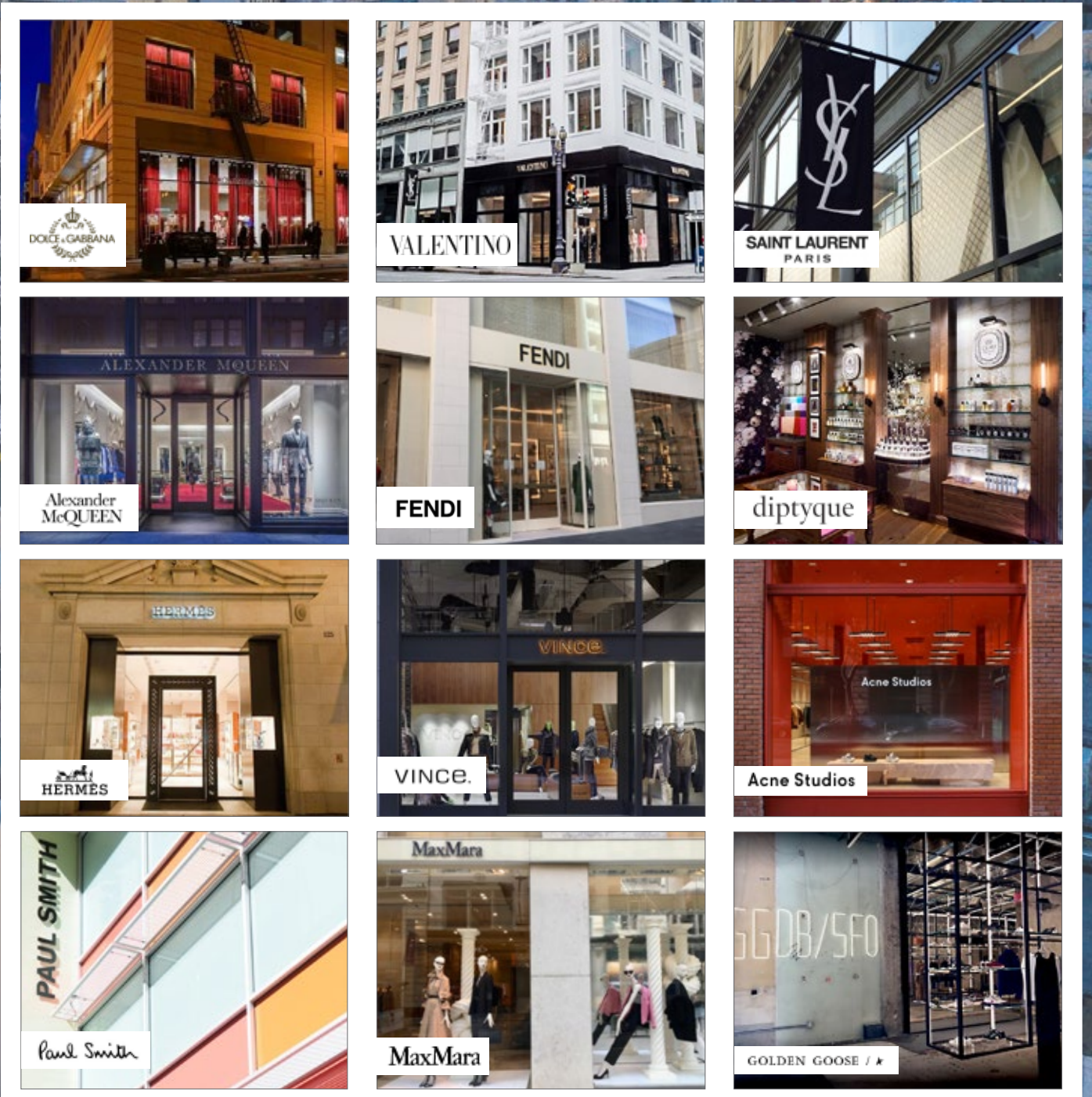
MONCLER

BVLGARI

TORY BURCH

Neiman Marcus

SWAROVSKI





# UNION | SQUARE

SAN FRANCISCO, CA

## UNION SQUARE

Home to some of the world's best retailers and restaurants, Union Square is the 3rd largest shopping area in the United States. Over the last century, almost every international brand has planted a stake in this legendary part of San Francisco. With its granite plaza, corner cafes, stage, and iconic palm trees, Union Square creates a beautiful setting for crowd gatherings, art exhibits, and civic celebrations. The cable cars head up Powell Street from here and musicians and flower stands add color to the corners. The Geary and Curran theaters one block west on Geary anchor the "theater district" and tickets for most of San Francisco's performing arts can be purchased right on the Square the day of the performance. And with over 60% of San Francisco's hotels, Union Square continues to be both an attraction and convenient gathering place for visitors and locals alike to experience a true symbol of San Francisco's vibrant and diverse community.

**SAN FRANCISCO  
POPULATION:  
850,282**



**AVERAGE DAILY  
HOTEL RATE: \$276**



**SAN FRANCISCO  
AVERAGE  
HOTEL OCCUPANCY  
RATE: 90.6%**



**\$10.7B SPENT  
ANNUALLY IN  
SAN FRANCISCO  
BY TOURISTS**



**26M TOURISTS  
EXPECTED IN SAN  
FRANCISCO IN 2019.  
UNION SQUARE IS  
THE MOST VISITED  
NEIGHBORHOOD**



**UNION SQUARE  
GENERATED OVER  
\$20M IN SALES TAX  
REVENUE FOR THE  
CITY, NEARLY 13% OF  
SAN FRANCISCO'S  
TOTAL SALES TAX  
REVENUE**



**60% PLUS OF  
SAN FRANCISCO'S  
HOTELS ARE WITHIN  
1/4 MILE OF  
233 GRANT**



**62,000 BART RIDERS  
PER DAY THROUGH  
POWELL  
STREET STATION**



**UNION SQUARE  
SAN FRANCISCO IS THE  
UNITED STATES'  
THIRD-LARGEST  
SHOPPING AREA**







# 54 | GEARY

SAN FRANCISCO

**PAMELA MENDELSON**

office 415.404.6650

[pam@mavenproperties.com](mailto:pam@mavenproperties.com)

DRE #00953050

**SARAH BRETT SCHWARTZ**

office 415.404.6959

[sarah@mavenproperties.com](mailto:sarah@mavenproperties.com)

DRE #01903152

**maven**  
RETAIL

NOTICE: This information has been secured from sources we believe to be reliable but we make no representations, warranties, express or implied, as to the accuracy of the information. Listing broker has been given enough information to provide only a preliminary interest in the property. The materials are not to be considered fact. The information contained herein is not a substitute for thorough due diligence investigation. References to square footage, zoning, use, or age are approximate. Please contact the San Francisco Planning Department to verify zoning at (415) 558-6378, as neither broker or landlord represent that this space is suitable for your use. Tenant or Buyer must verify the information at their own expense and bears all the risk for any inaccuracies. By receiving these materials you are agreeing to the disclaimers set forth herein. DRE#01878802