

231

GRANT
AVENUE

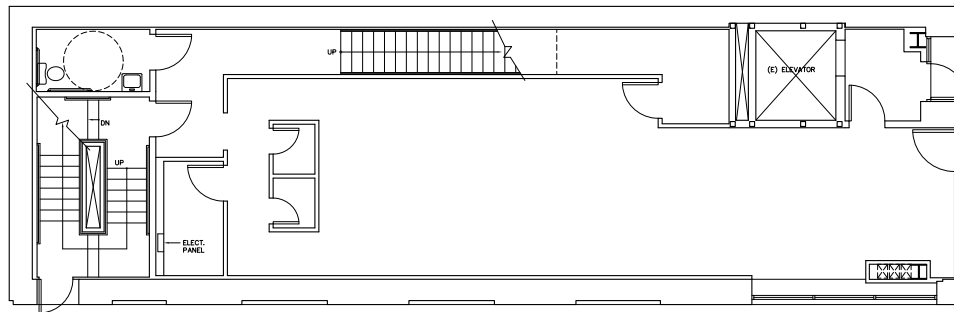
maven
RETAIL

PRIME
UNION
SQUARE
RETAIL



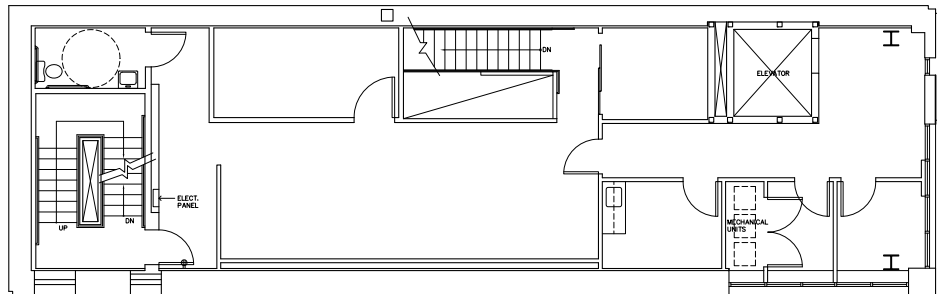
FLOOR PLANS

GROUND FLOOR | 1,747 SF



Grant Avenue

2ND FLOOR | 1,727 SF



Grant Avenue





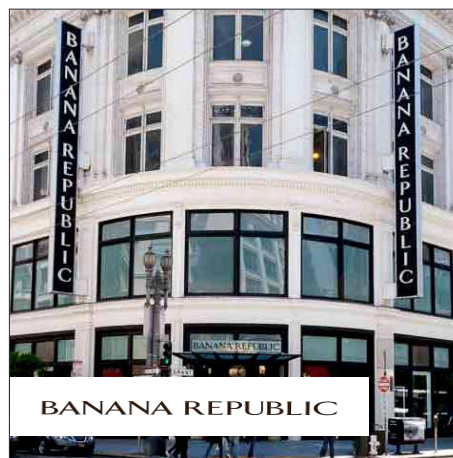
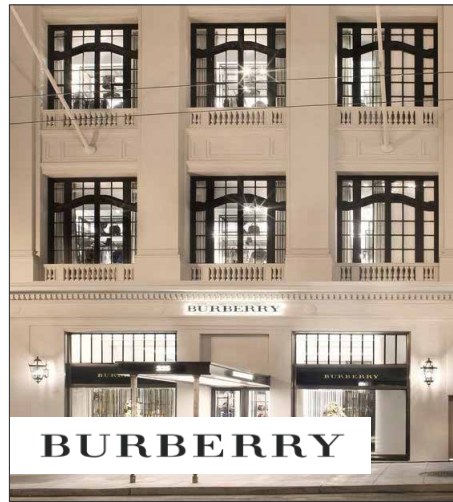
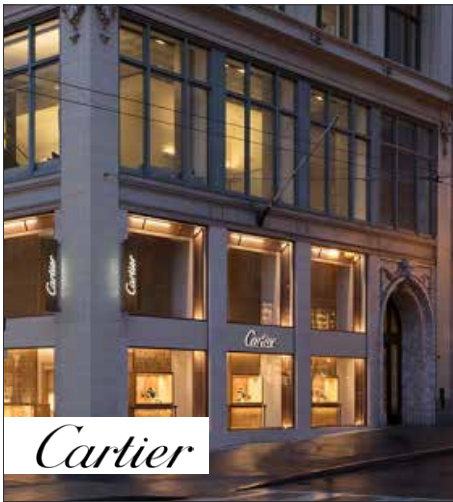
B U I L D I N G F E A T U R E S

- Great Union Square availability at the corner of Grant Avenue and Campton Place
- Available space: 1747 SF on ground level and 1727 SF on the second level
- Meticulously maintained building, with good natural light, operable windows and prominent signage
- A+ location with excellent access to public transportation
- Within one block of both the White House Garage and the Sutter/Stockton Garage
- Elevator and stairway access to the second level
- Two accessible bathrooms
- Nearby neighbors include Kiton, Coach, Harry Winston, Cartier, Dior, Banana Republic, Fendi, Max Mara, Burberry and Rimowa

NEIGHBORHOOD



| | | | | | | | | |
|---|---|---|---|--|---|-------------|--|--------------|
| | | KEARNY STREET | | | | | | |
| <p><i>charles</i> SCHWAB</p> <p>SHREVE & Co.</p> <p>icebreaker</p> <p>ATHLETA</p> <p>RIMOWA</p> <p>THE NORTH FACE</p> <p>COACH</p> <p>BANANA REPUBLIC</p> | | <p>Capital One</p> <p>jeffrey's toys</p> <p>Marmot</p> <p>MaxMara</p> <p>GO JANE</p> <p>TSE</p> <p>Dior</p> <p>GIORGIO ARMANI</p> <p>OLIVER PEOPLES</p> | | <p>Acne Studios</p> <p>GOLDEN GOOSE / *</p> <p>VINCE.</p> <p>Agent Provocateur</p> <p>Paul Smith</p> <p>Alexander McQUEEN</p> <p>BRUNELLO CUCINELLI</p> <p>MONT BLANC</p> <p>GOYARD</p> <p>DOLCE & GABBANA</p> | | | | |
| | | GRANT AVENUE | | | | | | |
| SUTTER STREET | <p>PRO OPTICS</p> <p>JOHN FLAUEVOG</p> <p>231 GRANT</p> <p>WILKES BASHFORD</p> <p>COLE HAAN</p> | CAMPTON PL | <p>KITON</p> <p>HARRY WINSTON</p> <p>Salvatore Ferragamo</p> <p>Brooks Brothers</p> <p>ZARA</p> <p>NIKE</p> | POST STREET | <p>Cartier</p> <p>FENDI</p> <p>BURBERRY</p> <p>TOURBILLON</p> <p>Maison Margiela</p> <p>GRAFF</p> <p>Ray-Ban</p> <p>ISAIA</p> <p>HERMÈS</p> <p>PINK</p> <p>GUCCI</p> <p>JOHNSTON & MURPHY</p> | MAIDEN LANE | <p>HERMÈS</p> <p>VALENTINO</p> <p>SAINT LAURENT PARIS</p> <p>BOTTEGA VENETA</p> <p>ALLSAINTS</p> <p>SUITSUPPLY</p> <p>CHANEL</p> <p>JIMMY CHOO</p> <p>LA PERLA</p> <p>TORY BURCH</p> <p>MONCLER</p> <p>BVLGARI</p> | GEARY STREET |
| | | STOCKTON STREET | | | | | | |
| <p>Apple</p> <p>WILLIAMS-SONOMA</p> <p>TIFFANY & Co.</p> <p>Saks Fifth Avenue</p> | | <p>UNION SQUARE</p> | | | | | | |
| | | POWELL STREET | | | | | | |

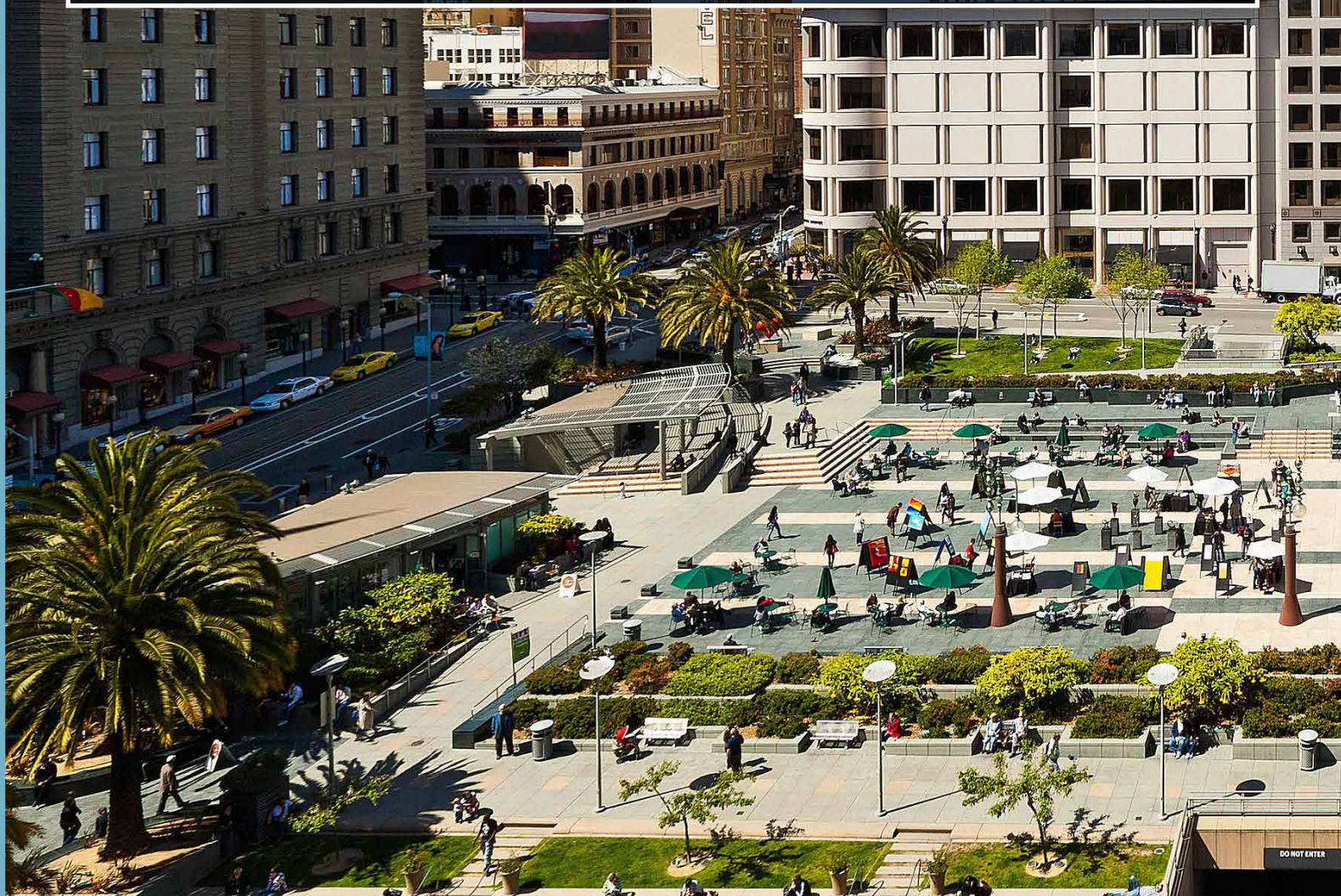


U N I O N S Q U A R E

UNION SQUARE

Home to some of the world's best retailers and restaurants, Union Square is the 3rd largest shopping area in the United States. Over the last century, almost every international brand has planted a stake in this legendary part of San Francisco. With its granite plaza, corner cafes, stage, and iconic palm trees, Union Square creates a beautiful setting for crowd gatherings, art exhibits, and civic celebrations. The cable cars head up Powell Street from here and musicians and flower stands add color to the corners. The Geary and Curran theaters one block west on Geary anchor the "theater district" and tickets for most of San Francisco's performing arts can be purchased right on the Square the day of the performance. And with over 60% of San Francisco's hotels, Union Square continues to be both an attraction and convenient gathering place for visitors and locals alike to experience a true symbol of San Francisco's vibrant and diverse community.

SAKS FIFTH AVENUE



**SAN FRANCISCO
POPULATION:
850,282**



**\$10.7B SPENT
ANNUALLY IN
SAN FRANCISCO
BY TOURISTS**



**60% PLUS OF
SAN FRANCISCO'S
HOTELS ARE WITHIN
1/4 MILE OF
233 GRANT**



**AVERAGE DAILY
HOTEL RATE: \$276**



**26M TOURISTS
EXPECTED IN SAN
FRANCISCO IN 2019.
UNION SQUARE IS
THE MOST VISITED
NEIGHBORHOOD**



**62,000 BART RIDERS
PER DAY
THROUGH POWELL
STREET STATION**



**SAN FRANCISCO
AVERAGE
HOTEL OCCUPANCY
RATE: 90.6%**



**UNION SQUARE
GENERATED OVER
\$20M IN SALES TAX
REVENUE FOR THE CITY,
NEARLY 13% OF SAN
FRANCISCO'S TOTAL
SALES TAX REVENUE**



**UNION SQUARE
IS THE UNITED STATES'
THIRD-LARGEST
SHOPPING AREA**



231

GRANT AVENUE



PAMELA MENDELSON
office 415.404.6650
pam@mavenproperties.com
BRE #00953050

SARAH BRETT SCHWARTZ
office 415.404.6959
sarah@mavenproperties.com
BRE #01903152

ROSA LEE
office 415.404.7340
rosa@mavenproperties.com
BRE #02057293

NOTICE: This information has been secured from sources we believe to be reliable but we make no representations, warranties, express or implied, as to the accuracy of the information. Listing broker has been given enough information to provide only a preliminary interest in the property. The materials are not to be considered fact. The information contained herein is not a substitute for thorough due diligence investigation. References to square footage, zoning, use, or age are approximate. Please contact the San Francisco Planning Department to verify zoning at (415) 558-6378, as neither broker or landlord represent that this space is suitable for your use. Tenant or Buyer must verify the information at their own expense and bears all the risk for any inaccuracies. By receiving these materials you are agreeing to the disclaimers set forth herein. BRE#01878802

466 Green Street Suite #203 | San Francisco, CA 94133 | 415.781.7700