

3911

PIEDMONT

OAKLAND • CA

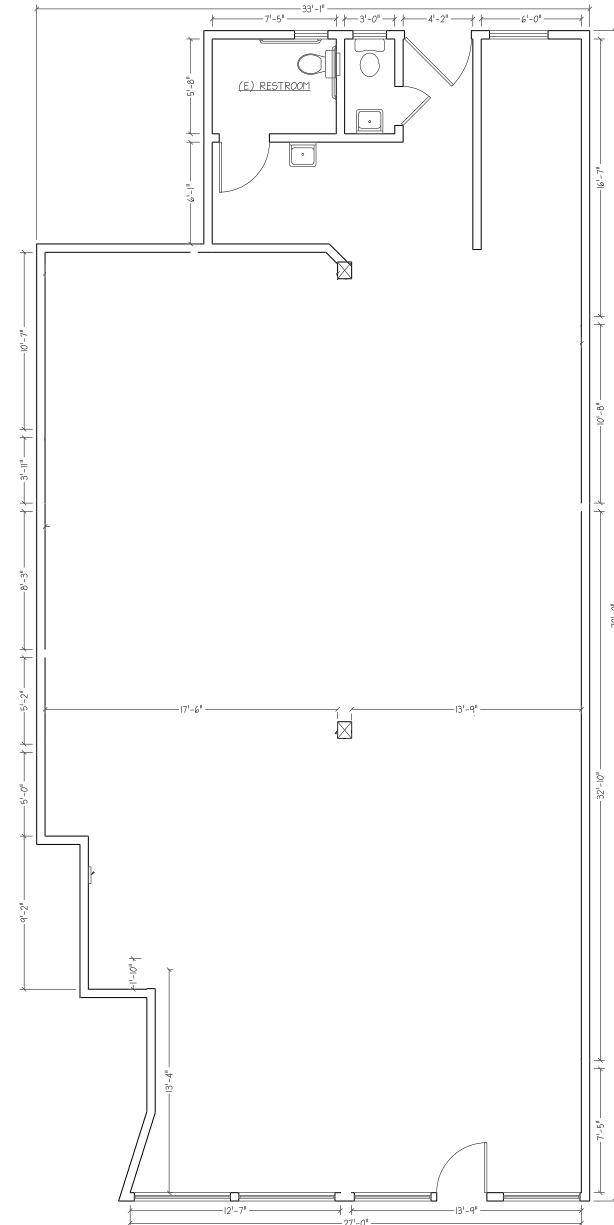
FITNESS/RETAIL SPACE FOR LEASE

maven
RETAIL



FEATURES

- +/- 2,089 SF
- High Ceilings
- Open Floor Plan with Abundant Light
- Excellent Foot Traffic and Visibility
- Easy Street Parking
- Neighboring Business include Blue Bottle Coffee, Commis, Homestead, Piedmont Grocery and more.





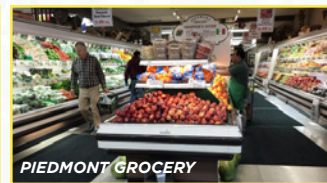
LANDMARK'S PIEDMONT THEATRE



FENTON'S CREAMERY



COMMIS



PIEDMONT GROCERY



BLUE BOTTLE COFFEE



TEMESCAL BREWING

BLUE BOTTLE COFFEE

HOMEROOM

SUBROSA COFFEE

BIERHAUS

FENTON'S CREAMERY

CLOVE & HOOK

LANDMARK'S PIEDMONT THEATRE

CARL'S JR.

OHGANE

GETA JAPANESE RESTAURANT

CITIBANK

STARBUCKS

PIEDMONT GROCERY CO.

KAISER PERMANENTE

COMMIS

MOSSWOOD PARK AMPHITHEATER

WALGREENS

THE MUSEUM OF ART & DIGITAL ENTERTAINMENT

JUDOKU SUSHI

CHIPOTLE

STARBUCKS

COFFEE ROMA

SPROUTS FARMER'S MARKET

CVS

3905
PIEDMONT
OAKLAND • CA

NEIGHBORHOOD



3911

PIEDMONT

OAKLAND • CA

FITNESS/RETAIL SPACE FOR LEASE

maven
RETAIL • OFFICE • INDUSTRIAL

JOAN RUYLE

415.404.7313

joan@mavenproperties.com

DRE #02006025

SANTINO DEROSE

415.404.7337

sd@mavenproperties.com

DRE #01338326

NOTICE: This information has been secured from sources we believe to be reliable but we make no representations, warranties, express or implied, as to the accuracy of the information. Listing broker has been given enough information to provide only a preliminary interest in the property. The materials are not to be considered fact. The information contained herein is not a substitute for thorough due diligence investigation. References to square footage, zoning, use, or age are approximate. Please contact the San Francisco Planning Department to verify zoning at (415) 558-6378, as neither broker or landlord represent that this space is suitable for your use. Tenant or Buyer must verify the information at their own expense and bears all the risk for any inaccuracies. By receiving these materials you are agreeing to the disclaimers set forth herein. DRE#01878802

466 Green Street Suite #203 | San Francisco, CA 94133 | 415.781.7700