

188 OCTAVIA STREET

SAN FRANCISCO | CALIFORNIA

TWO MODERN RETAIL SPACES AVAILABLE

1,562 SF & 998 SF



188 OCTAVIA STREET

SAN FRANCISCO | CALIFORNIA



188 OCTAVIA consists of two modern retail spaces located in an exciting new Hayes Valley development just off the bustling Hayes Street corridor. Each space will feature big windows, high ceilings, and contemporary finishes. Located along the gateway into San Francisco for visitors arriving from the 101 freeway, 188 Octavia is sure to catch the visitor's eye as they drive into the Hayes Valley neighborhood. 28 upscale residential units top these two magnificent spaces, which are expected to be delivered in Spring 2020.

- Two modern retail spaces consisting of approximately 1,562 SF and 998 SF corner retail spaces Spring 2020 Delivery.
- Each space features high ceilings, big display windows, and great visibility from all visitors coming into San Francisco from the 101 South freeway and the Bay Bridge.
- Suitable for a variety of uses including restaurant, café, personal and professional services.
- Wide storefront with attractive signage opportunities on two exterior sides. Situated at the base of a 28-unit luxury midrise spanning an entire block.
- Centrally located in Hayes Valley near City Hall, SFJazz Center, Davies Symphony Hall, War Memorial Opera House, and some of the City's best restaurants and shops such as Absinthe, Ritual Coffee, Marine Layer, Buck Mason, Cala, Souvla, Warby Parker, and more.



99

WALKABLE CITY HUB

Thriving urban hub provides abundant walkable retail and restaurant amenities.



100

PUBLIC TRANSPORTATION HUB

The Property is located at the junction of major Muni and Bus lines.

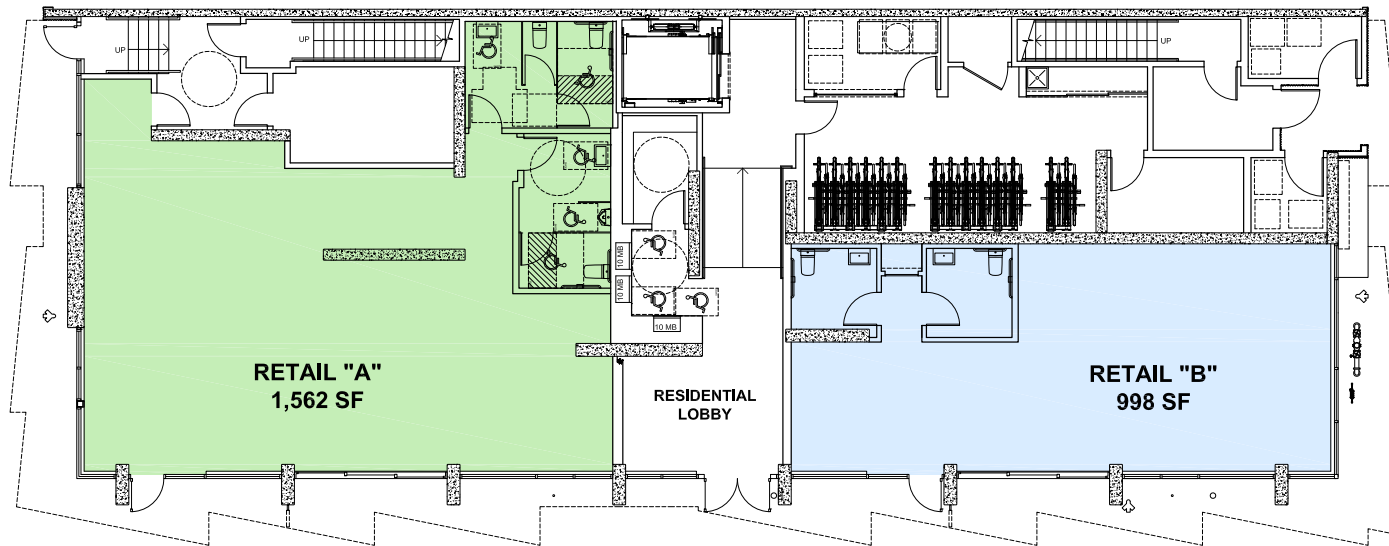


84

BIKE FRIENDLY NEIGHBORHOOD

Neighborhood amenities such as dedicated bike lanes, shared bike stations, and ample residential and commercial bicycle parking.

FLOOR PLANS



FEATURES

- Two retail spaces on ground floor: 1,562 SF and 998 SF
- High ceilings
- Centrally located
- Prime corner location with expansive window line
- Great visibility from 101 / Bay Bridge freeway exit



188 OCTAVIA STREET

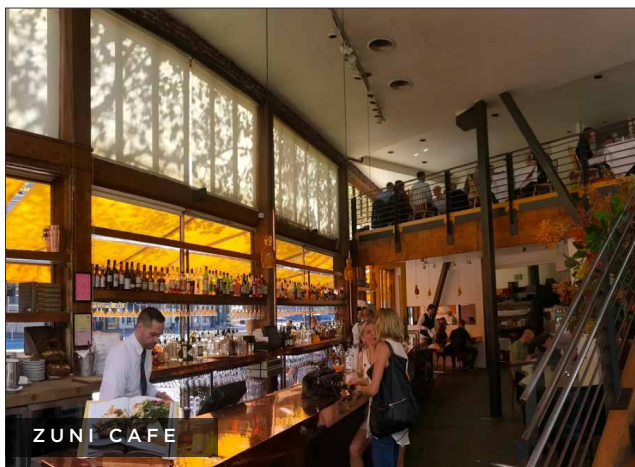
SAN FRANCISCO | CALIFORNIA

AREA MAP



1. San Francisco Opera
2. San Francisco Symphony
3. Pläj
4. Nojo
5. Hayes Street Grill
6. Grove
7. SF Jazz
8. Absinthe
9. A Mano
10. Dobbs Ferry
11. Brass Tacks
12. Fatted Calf
13. Blue Bottle Coffee
14. Rickshaw Stop
15. Miette
16. Stacks
17. Domo
18. Rich Table
19. Zuni
20. Pause
21. De Lessio
22. Cala
23. Loving Cup
24. Smitten Ice Cream
25. Petit Crenn
26. Warby Parker
27. Souvla
28. Grant Propeller
29. SF Jazz Center
30. Marine Layer
31. Lers Ros
32. Corridor
33. Otoro Sushi
34. Straw
35. Mercury Cafe
36. Boba Guys
37. Proposition Chicken
38. Espetus Steak House

HAYES VALLEY NEIGHBORHOOD



188 OCTAVIA STREET

SAN FRANCISCO | CALIFORNIA

PAMELA MENDELSON
office 415.404.6650
pam@mavenproperties.com
DRE #00953050

SARAH BRETT SCHWARTZ
office 415.404.6959
sarah@mavenproperties.com
DRE #01903152

maven
RETAIL

NOTICE: This information has been secured from sources we believe to be reliable but we make no representations, warranties, express or implied, as to the accuracy of the information. Listing broker has been given enough information to provide only a preliminary interest in the property. The materials are not to be considered fact. The information contained herein is not a substitute for thorough due diligence investigation. References to square footage, zoning, use, or age are approximate. Please contact the San Francisco Planning Department to verify zoning at (415) 558-6378, as neither broker or landlord represent that this space is suitable for your use. Tenant or Buyer must verify the information at their own expense and bears all the risk for any inaccuracies. By receiving these materials you are agreeing to the disclaimers set forth herein. DRE#01878802