



3027C FILLMORE | RETAIL SPACE FOR LEASE
SAN FRANCISCO, CALIFORNIA

maven
RETAIL • OFFICE • INDUSTRIAL

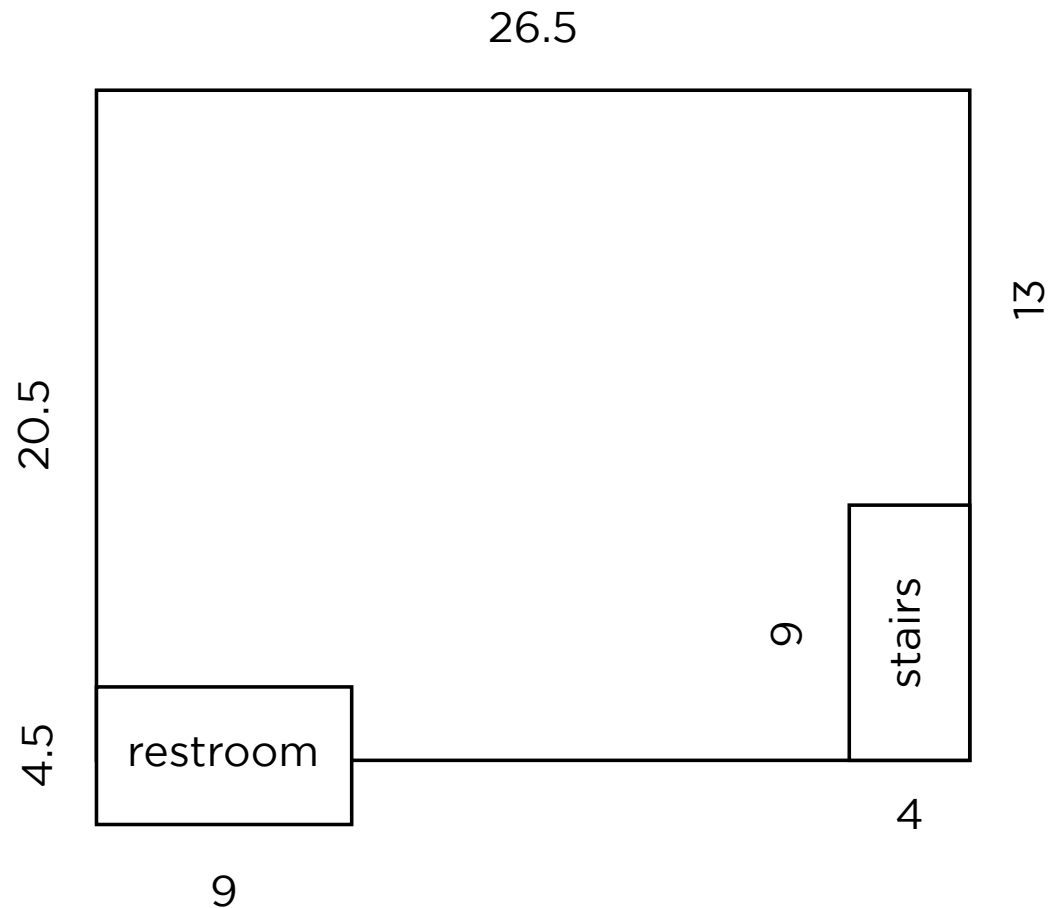


maven
RETAIL

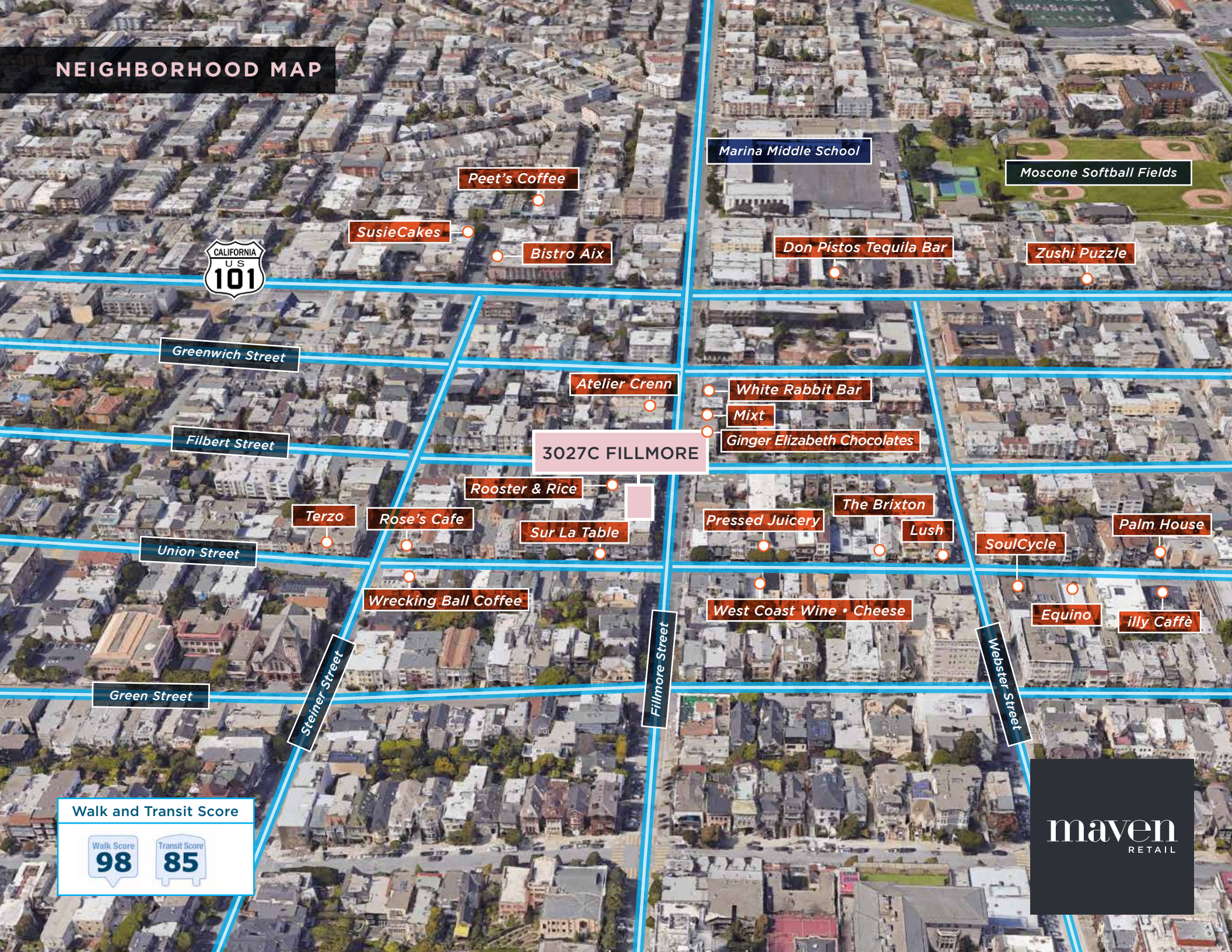
FEATURES

HIGHLIGHTS

- +/- 550 square feet of existing hair salon space
- Excellent proximity to all Union Street retailers and restaurants
- Adjacent to new Shake Shake/Rumble Fitness development
- Neighbors include Wrecking Ball Coffee, Shake Shake (coming soon), Rumble Fitness (coming soon), Chorus Meditation (coming soon), Mix't Greens, Rose's Café, Pressed Juicery, Pilates ProWorks, and many more!



NEIGHBORHOOD MAP



Greenwich Street

Filbert Street

Union Street

Green Street

Steiner Street

Fillmore Street

Webster Street

Marina Middle School

Moscone Softball Fields

Peet's Coffee

SusieCakes

Bistro Aix

Don Pistos Tequila Bar

Zushi Puzzle

Atelier Crenn

White Rabbit Bar

Mixt

Ginger Elizabeth Chocolates

3027C FILLMORE

Rooster & Rice

Terzo

Rose's Cafe

Sur La Table

Pressed Juicery

The Brixton

Lush

SoulCycle

Palm House

Wrecking Ball Coffee

West Coast Wine • Cheese

Equino

illy Caffè

Walk and Transit Score

Walk Score
98

Transit Score
85

maven
RETAIL



SUR LA TABLE



BRIXTON



NEIGHBORHOOD

LUSH

FILLMORE



TERZO



WRECKING BALL COFFEE



EQUINOX



WEST COAST WINE • CHEESE



SOULCYCLE



ATELIER CRENN

3027C FILLMORE | RETAIL SPACE FOR LEASE SAN FRANCISCO, CALIFORNIA

maven
RETAIL • OFFICE • INDUSTRIAL

HALEY KLEIN

415.404.7330

haley@mavenproperties.com

DRE #01907308

SANTINO DEROSE

office 415.404.7337

sd@mavenproperties.com

DRE #01338326

NOTICE: This information has been secured from sources we believe to be reliable but we make no representations, warranties, express or implied, as to the accuracy of the information. Listing broker has been given enough information to provide only a preliminary interest in the property. The materials are not to be considered fact. The information contained herein is not a substitute for thorough due diligence investigation. References to square footage, zoning, use, or age are approximate. Please contact the San Francisco Planning Department to verify zoning at (415) 558-6378, as neither broker or landlord represent that this space is suitable for your use. Tenant or Buyer must verify the information at their own expense and bears all the risk for any inaccuracies. By receiving these materials you are agreeing to the disclaimers set forth herein. DRE#01878802

466 Green Street Suite #203 | San Francisco, CA 94133 | 415.781.7700