



554 16TH

554 16TH STREET | +/- 1,372 SF RETAIL/FITNESS SPACE AVAILABLE
OAKLAND, CALIFORNIA

maven
RETAIL • OFFICE • INDUSTRIAL

FEATURES



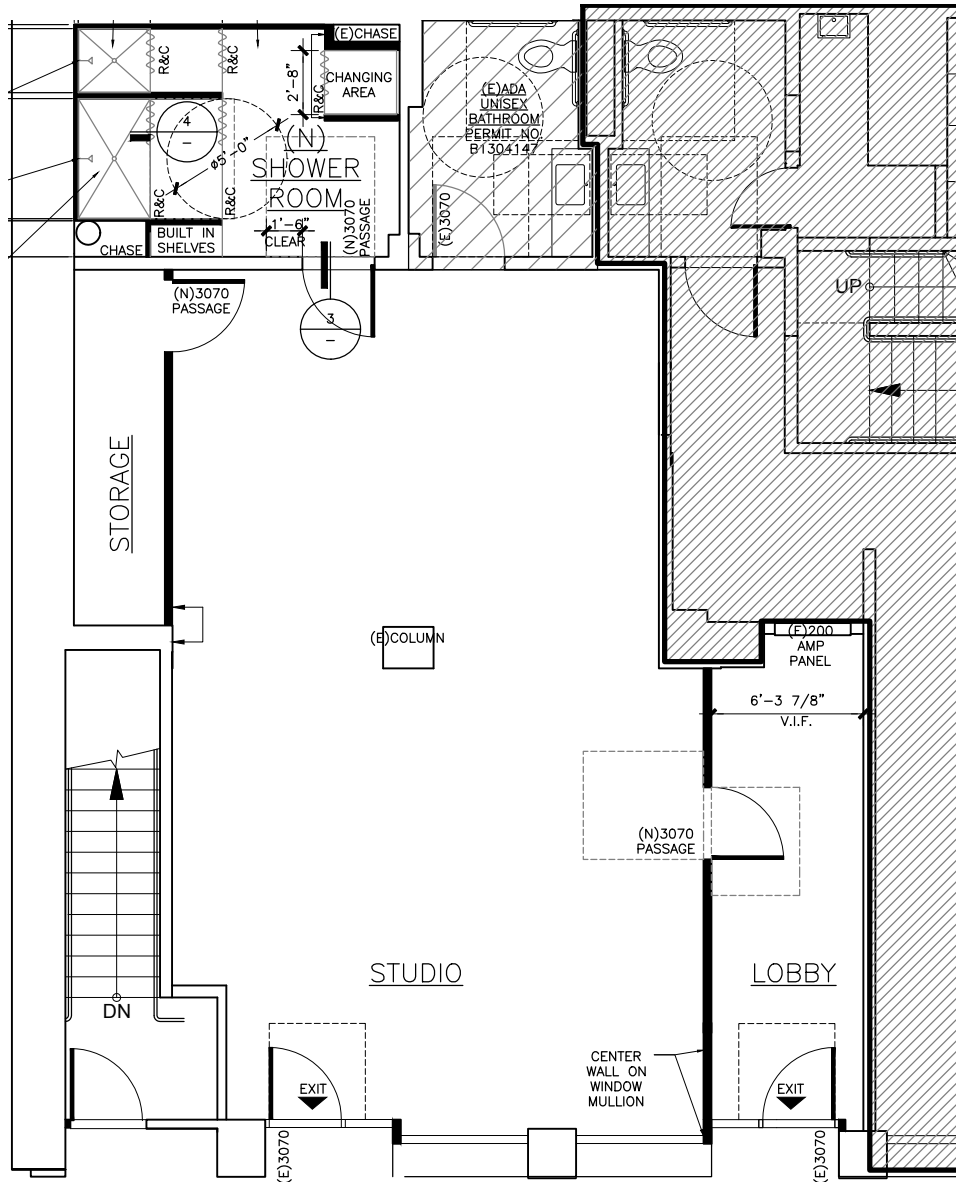
HIGHLIGHTS

- +/- 1,372 SF
- Upgraded Storefront
- Fully Built for a Yoga Studio
- Locker room with showers
- Great Signage Opportunity
- Attractive building with great co-tenancy
- Nearby businesses include Cape & Cowl, Fox Theater, Emporium, Dogwood, Bar Shiru, Ladle & Leaf, and more.

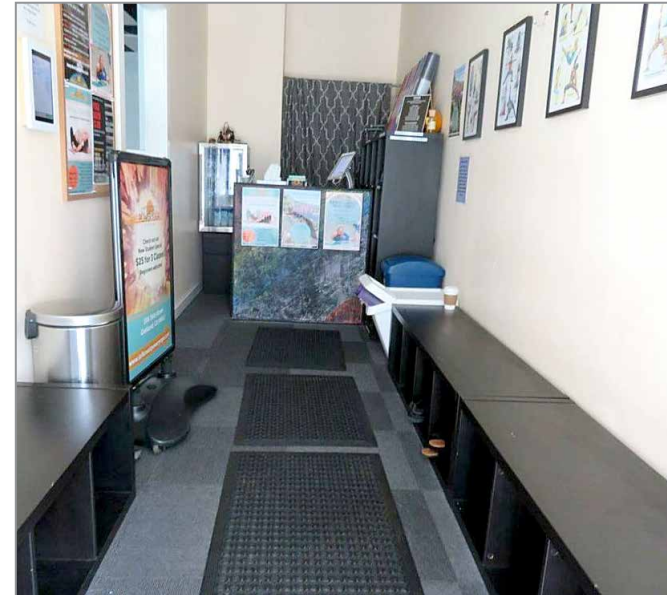
EQUIPMENT LIST

- 17 Marley Infrared ceiling mounted heating panels from Heating Green with programmable thermostat
- Electric hot water heater for showers
- Mirrored wall (consisting of 6' x 8' Mirrors / Commercial grade)
- Industrial fan with dimmer switch
- Hanging globe lights w/dimmer switch in yoga room
- Hand weights / dumbbell holder
- Cubby unit
- Check-in desk

FLOOR PLAN



16TH STREET



AERIAL MAP

Lake Merritt



Bar Shiru

Barefoot Movement

Peet's Coffee

12th Street/
Oakland City Center Station



Oakland Marriott
City Center

Make Westing

N-Zone Uptown

Dogwood

Cafe Van Klee

Woods Bar

Broadway Avenue

554 16th Street

Frank H. Ogawa Plaza

Awaken Cafe

Ume Yoga

Oakland Federal Building

Phuong Nam

Clay Street

Tambo Peruvian

Oakland Ice Center

San Pablo Avenue

The New Parish

Curry Up Now

Jefferson Street

Uncle Willie's BBQ

12th Street

18th Street

17th Street

16th Street

14th Street

Castro Street

Walk, Transit and Bike Score

Walk Score
98

Transit Score
86

Bike Score
92





THE NEW PARISH



AWAKEN CAFE



NEIGHBORHOOD

TAMBO



CAFE VAN KLEEF



MCMULLEN



BAR SHIRU



FRANK H OGAWA PLAZA



BAREFOOT MOVEMENT



MAKE WESTING

UPTOWN

maven
RETAIL • OFFICE • INDUSTRIAL

JOAN RUYLE

office 415.404.7313

joan@mavenproperties.com

DRE #02006025

SANTINO DEROSE

office 415.404.7337

sd@mavenproperties.com

DRE #01338326

NOTICE: This information has been secured from sources we believe to be reliable but we make no representations, warranties, express or implied, as to the accuracy of the information. Listing broker has been given enough information to provide only a preliminary interest in the property. The materials are not to be considered fact. The information contained herein is not a substitute for thorough due diligence investigation. References to square footage, zoning, use, or age are approximate. Please contact the San Francisco Planning Department to verify zoning at (415) 558-6378, as neither broker or landlord represent that this space is suitable for your use. Tenant or Buyer must verify the information at their own expense and bears all the risk for any inaccuracies. By receiving these materials you are agreeing to the disclaimers set forth herein. DRE#01878802

466 Green Street Suite #203 | San Francisco, CA 94133 | 415.781.7700