

1348 9<sup>TH</sup> AVE

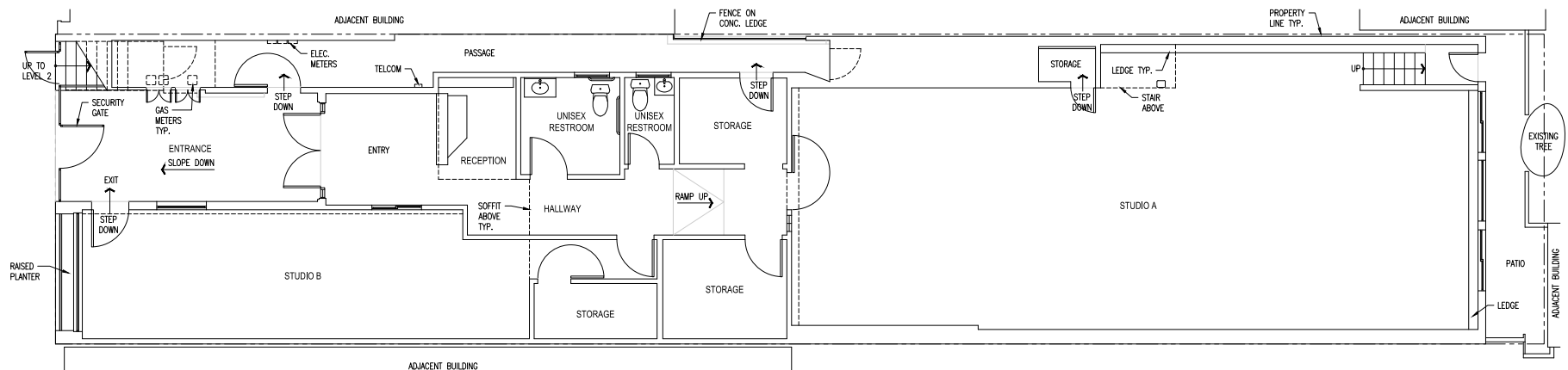
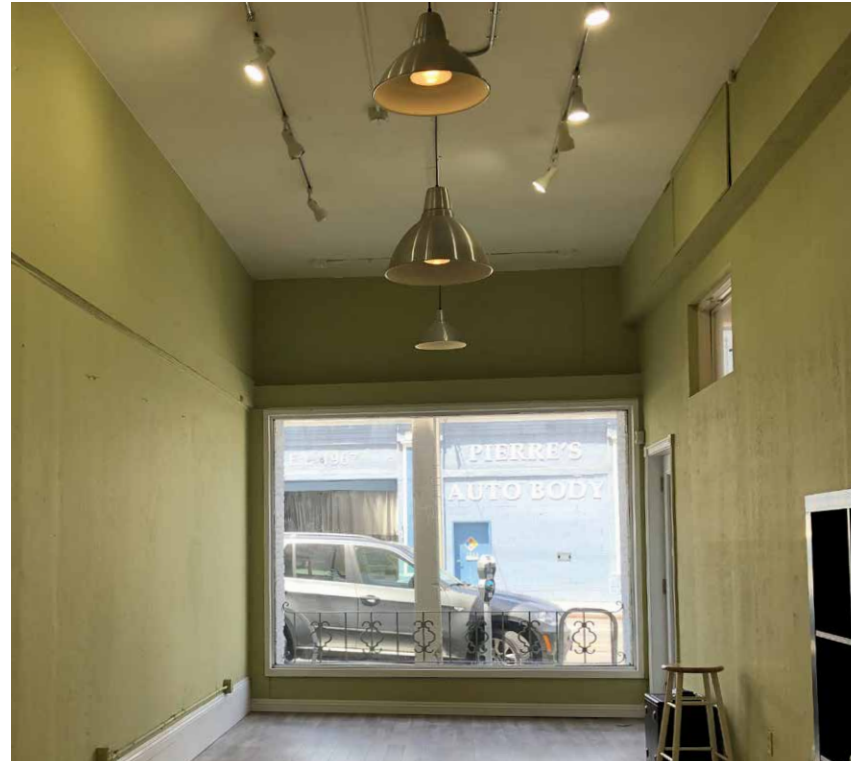
SAN FRANCISCO, CALIFORNIA

FORMER YOGA STUDIO FOR LEASE

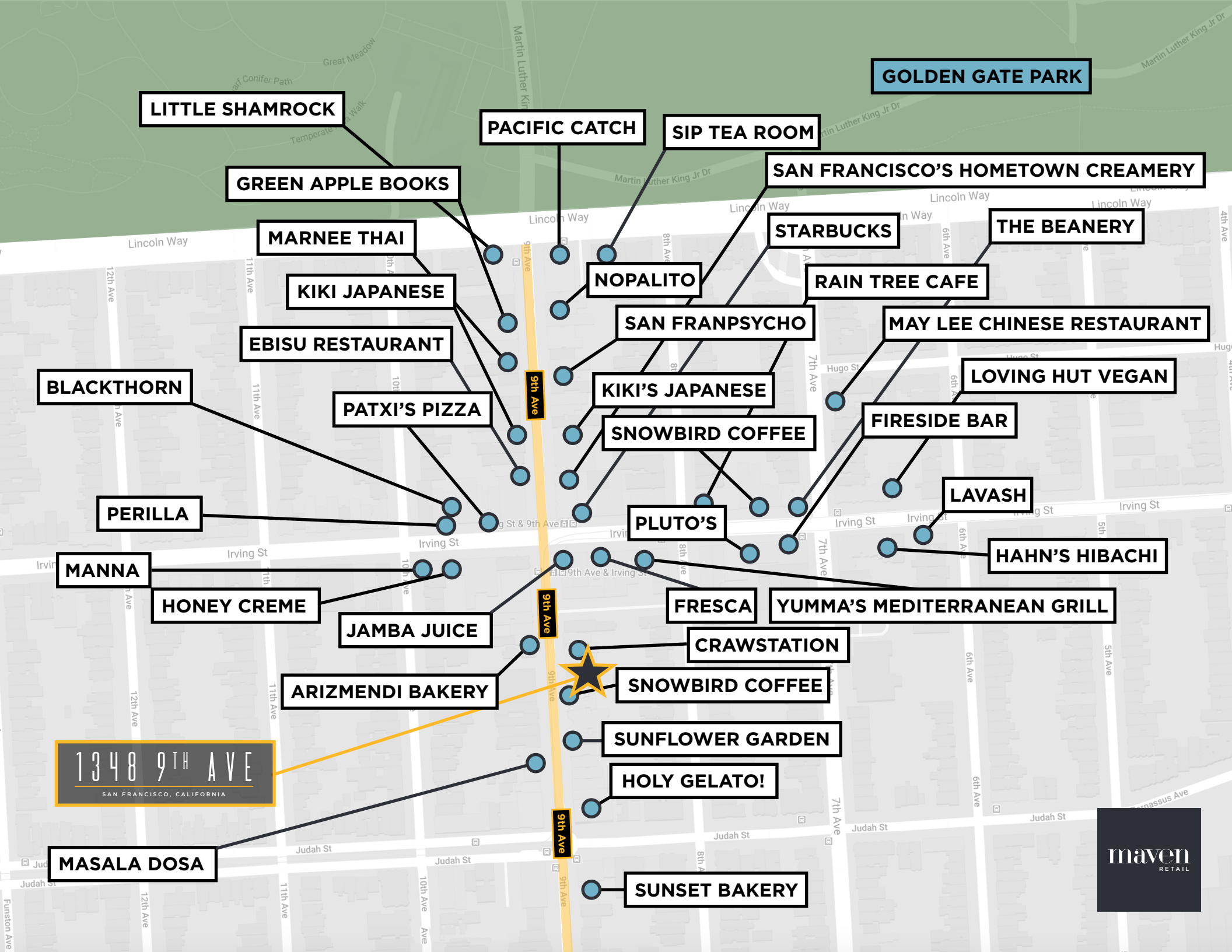
maven  
RETAIL

## FEATURES

- +/- 2,374 SF
- Second generation yoga studio
- 1 large group room, 1 small group room, plus reception and waiting area
- Prominent 9<sup>TH</sup> and Irving intersection in the Inner Sunset neighborhood
- Great usable space, high ceilings, open floor plan
- Neighbors include Snowbird Café, Arizmendi, Ebisu, Manna, Sunflower, San Francisco's Hometown Creamery and more!



LEVEL 1



**GOLDEN GATE PARK**

**LITTLE SHAMROCK**

**PACIFIC CATCH**

**SIP TEA ROOM**

**GREEN APPLE BOOKS**

**SAN FRANCISCO'S HOMETOWN CREAMERY**

**MARNEE THAI**

**STARBUCKS**

**THE BEANERY**

**KIKI JAPANESE**

**NOPALITO**

**RAIN TREE CAFE**

**EBISU RESTAURANT**

**SAN FRANPSYCHO**

**MAY LEE CHINESE RESTAURANT**

**BLACKTHORN**

**PATXI'S PIZZA**

**KIKI'S JAPANESE**

**LOVING HUT VEGAN**

**SNOWBIRD COFFEE**

**FIRESIDE BAR**

**PERILLA**

**PLUTO'S**

**LAVASH**

**HAHN'S HIBACHI**

**MANNA**

**HONEY CREME**

**JAMBA JUICE**

**FRESCA**

**YUMMA'S MEDITERRANEAN GRILL**

**CRAWSTATION**

**ARIZMENDI BAKERY**

**SNOWBIRD COFFEE**

**SUNFLOWER GARDEN**

**HOLY GELATO!**

**1348 9TH AVE**  
SAN FRANCISCO, CALIFORNIA

**MASALA DOSA**

**SUNSET BAKERY**

**maven**  
RETAIL



1348 9TH AVE

SAN FRANCISCO, CALIFORNIA

NEIGHBORHOOD



NEIGHBORHOOD





# 1348 9<sup>TH</sup> AVE

SAN FRANCISCO, CALIFORNIA

**maven**  
RETAIL • OFFICE • INDUSTRIAL

**HALEY KLEIN**

415.404.7330

[haley@mavenproperties.com](mailto:haley@mavenproperties.com)

DRE #01907308

**SANTINO DEROSE**

office 415.404.7337

[sd@mavenproperties.com](mailto:sd@mavenproperties.com)

DRE #01338326

NOTICE: This information has been secured from sources we believe to be reliable but we make no representations, warranties, express or implied, as to the accuracy of the information. Listing broker has been given enough information to provide only a preliminary interest in the property. The materials are not to be considered fact. The information contained herein is not a substitute for thorough due diligence investigation. References to square footage, zoning, use, or age are approximate. Please contact the San Francisco Planning Department to verify zoning at (415) 558-6378, as neither broker or landlord represent that this space is suitable for your use. Tenant or Buyer must verify the information at their own expense and bears all the risk for any inaccuracies. By receiving these materials you are agreeing to the disclaimers set forth herein. DRE#01878802

466 Green Street Suite #203 | San Francisco, CA 94133 | 415.781.7700