

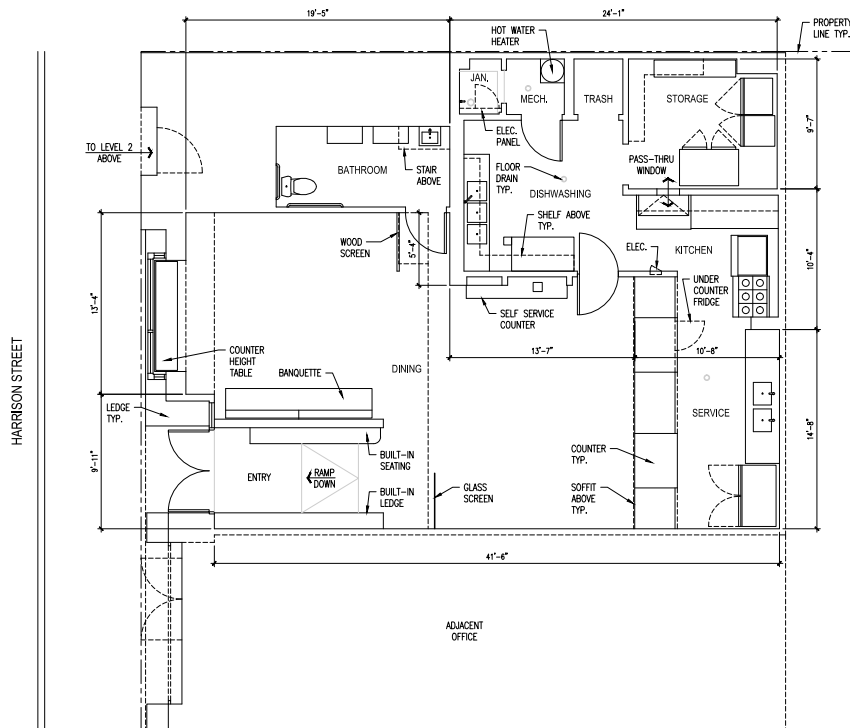
937 | HARRISON STREET
SAN FRANCISCO, CALIFORNIA





FEATURES

- +/- 1,423 SF
- Second generation restaurant with infrastructure in place
- Central delivery location with easy freeway access
- Abundant natural lighting
- High ceilings with great street presence
- Close proximity to Metreon, Westfield, AT&T Park, Design Center, Trader Joe's center, CALTRAIN Station & The Bay Club
- Neighboring businesses include Whole Foods, K & L Wine Merchants, Mr. East Kitchen, Sightglass Coffee, Turtle Tower and more!



99

WALKABLE CITY HUB

Thriving urban hub provides abundant walkable retail and restaurant amenities.



100

PUBLIC TRANSPORTATION HUB

World class transportation: 3 Blocks from BART and several MUNI stops nearby. 1178 Folsom Street is an eight minute walk from the J CHURCH, the KT INGLESIDE THIRD ST and the L TARAVAL at the Metro Civic Center Station/Downtown stop.



99

BIKE FRIENDLY NEIGHBORHOOD

Dedicated lanes on Folsom, Howard, 7th and 8th Streets.





ODDJOB



BASIL



VIVE LE TARTE



SIGHTGLASS COFFEE



WHOLE FOODS



FITNESS SF



DRIFTWOOD



TRADER JOE'S



AUDIO NIGHTCLUB

937 | HARRISON STREET

SAN FRANCISCO, CALIFORNIA

maven
RETAIL • OFFICE • INDUSTRIAL

HALEY KLEIN

415.404.7330

haley@mavenproperties.com

DRE #01907308

SANTINO DEROSE

office 415.404.7337

sd@mavenproperties.com

DRE #01338326

NOTICE: This information has been secured from sources we believe to be reliable but we make no representations, warranties, express or implied, as to the accuracy of the information. Listing broker has been given enough information to provide only a preliminary interest in the property. The materials are not to be considered fact. The information contained herein is not a substitute for thorough due diligence investigation. References to square footage, zoning, use, or age are approximate. Please contact the San Francisco Planning Department to verify zoning at (415) 558-6378, as neither broker or landlord represent that this space is suitable for your use. Tenant or Buyer must verify the information at their own expense and bears all the risk for any inaccuracies. By receiving these materials you are agreeing to the disclaimers set forth herein. DRE#01878802

466 Green Street Suite #203 | San Francisco, CA 94133 | 415.781.7700