

# 322 KEARNY

SAN FRANCISCO | CALIFORNIA



FINANCIAL DISTRICT RESTAURANT OPPORTUNITY

maven  
RETAIL



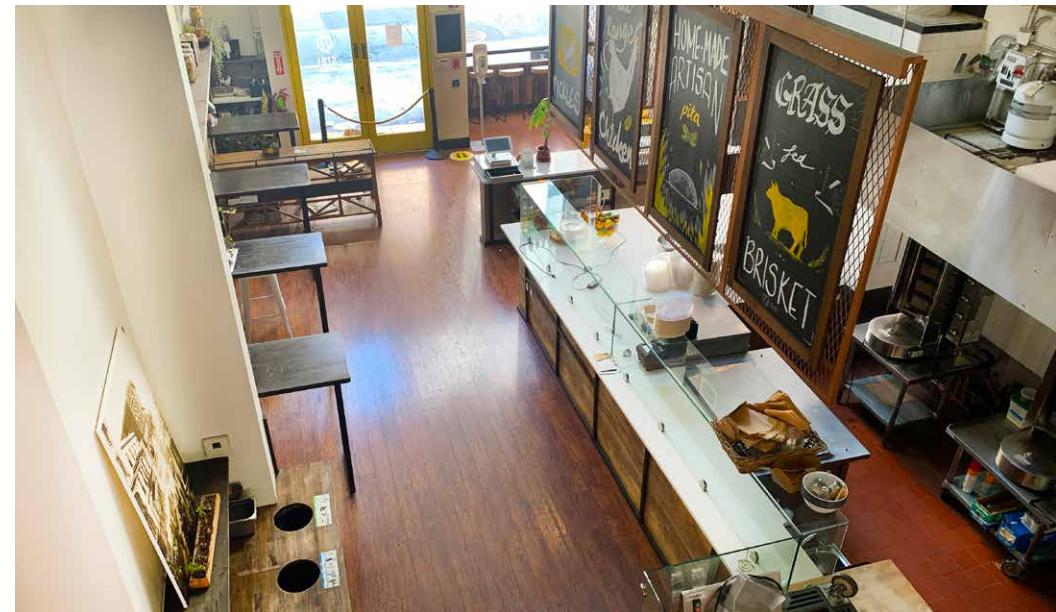
# 322 KEARNY

## FEATURES

- Asset sale includes FF + E, lease and ABC license
- +/- 1,626 SF ground floor + 566 SF Mezzanine + 1,210 SF Lower Level
- Two Type 1 Hoods
- Kitchen Infrastructure In Place
- Lower Level and Ground Floor Prep Area
- Walk-In Refrigeration
- Elevator Services all Levels
- High Ceilings
- Type 41 License
- Landlord will consider new lease or lease extension
- Attractive purchase price









# NEIGHBORHOOD



INTERSTATE  
80

SOMA

INTERSTATE  
80

Salesforce Tower

Financial District

Bank of America  
Financial Center

Montgomery Station



Charles Schwab

322 KEARNY

Powell Station



Equinox

Ladle & Leaf

Le Méridien

Chase Bank

Crocker Galleria

Market Street

Transamerica Pyramid

Cafe Venue

Orangetheory Fitness

Sterling Bank & Trust

Credo

Sam's Grill & Seafood Restaurant

Wayfare Tavern

Cafe Bastille

B44 Catalan Bistro

Wells Fargo

Leo's

Palio

Ladle & Leaf

Pine Street

Bush Street

California Street

Sacramento Street

Kearny Street

Washington Street

Columbus Street

Verjus

Kusakabe

Barbarossa

The Rug Company



# 322 KEARNY

SAN FRANCISCO | CALIFORNIA

**PAM MENDELSON**  
office 415.404.6650  
pam@mavenproperties.com  
DRE #00953050

**JOAN RUYLE**  
office 415.404.7313  
joan@mavenproperties.com  
DRE #02006025

**maven**  
RETAIL

NOTICE: This information has been secured from sources we believe to be reliable but we make no representations, warranties, express or implied, as to the accuracy of the information. Listing broker has been given enough information to provide only a preliminary interest in the property. The materials are not to be considered fact. The information contained herein is not a substitute for thorough due diligence investigation. References to square footage, zoning, use, or age are approximate. Please contact the San Francisco Planning Department to verify zoning at (415) 558-6378, as neither broker or landlord represent that this space is suitable for your use. Tenant or Buyer must verify the information at their own expense and bears all the risk for any inaccuracies. By receiving these materials you are agreeing to the disclaimers set forth herein. DRE#01878802