

1050 VAN NESS

SAN FRANCISCO • CALIFORNIA

NEWLY REMODELED RESTAURANT FOR SALE



LOCATED ON THE GROUND FLOOR OF THE NEW COURTYARD BY MARRIOTT

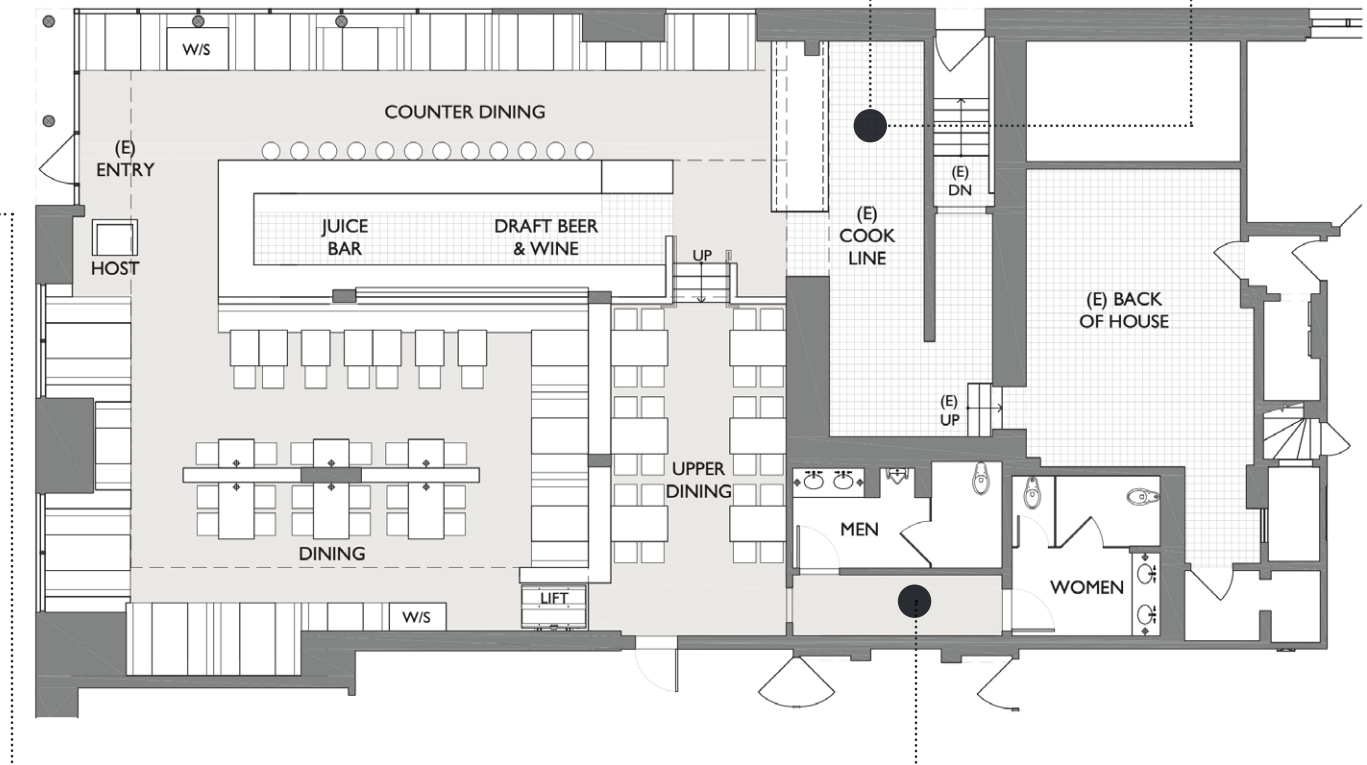
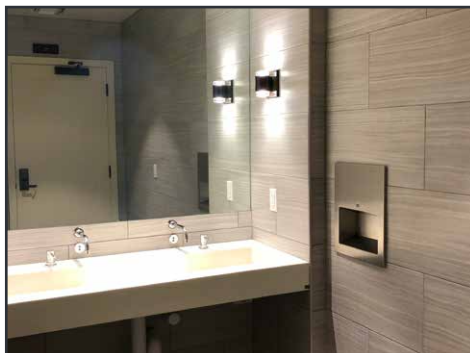
maven
RETAIL

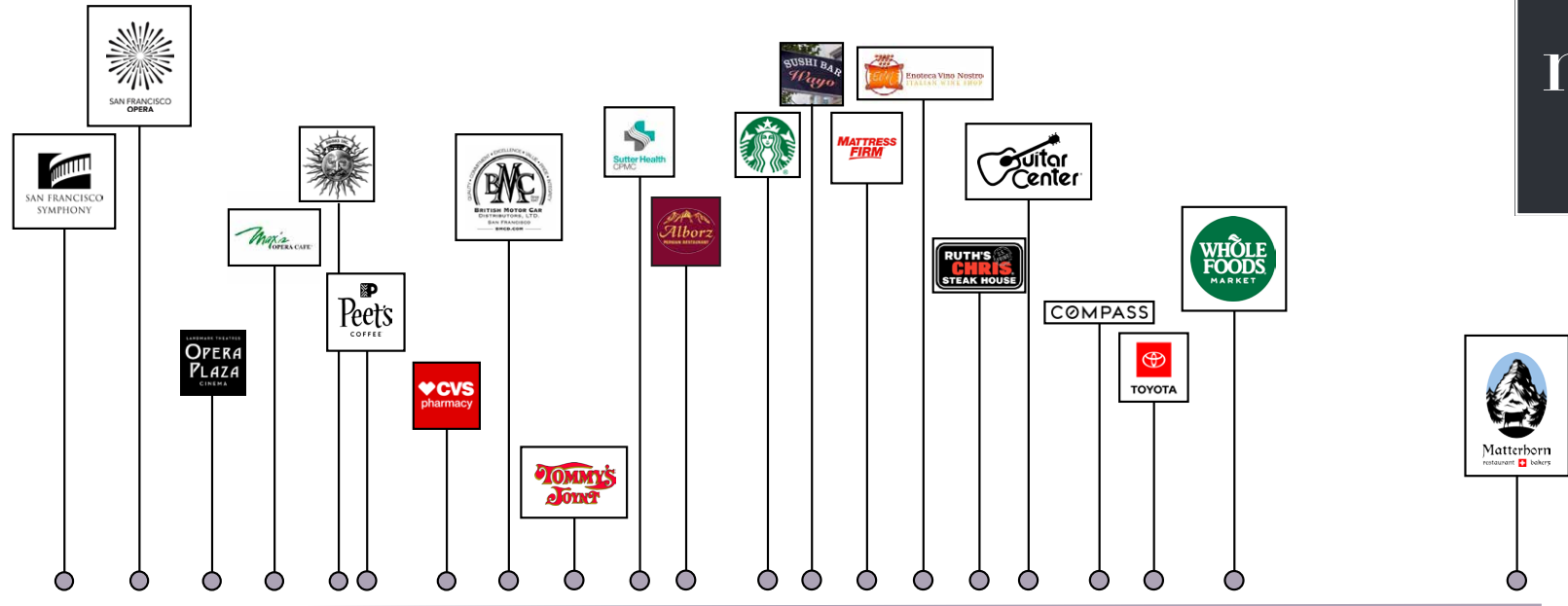


1050 VAN NESS | FEATURES + FLOOR PLAN

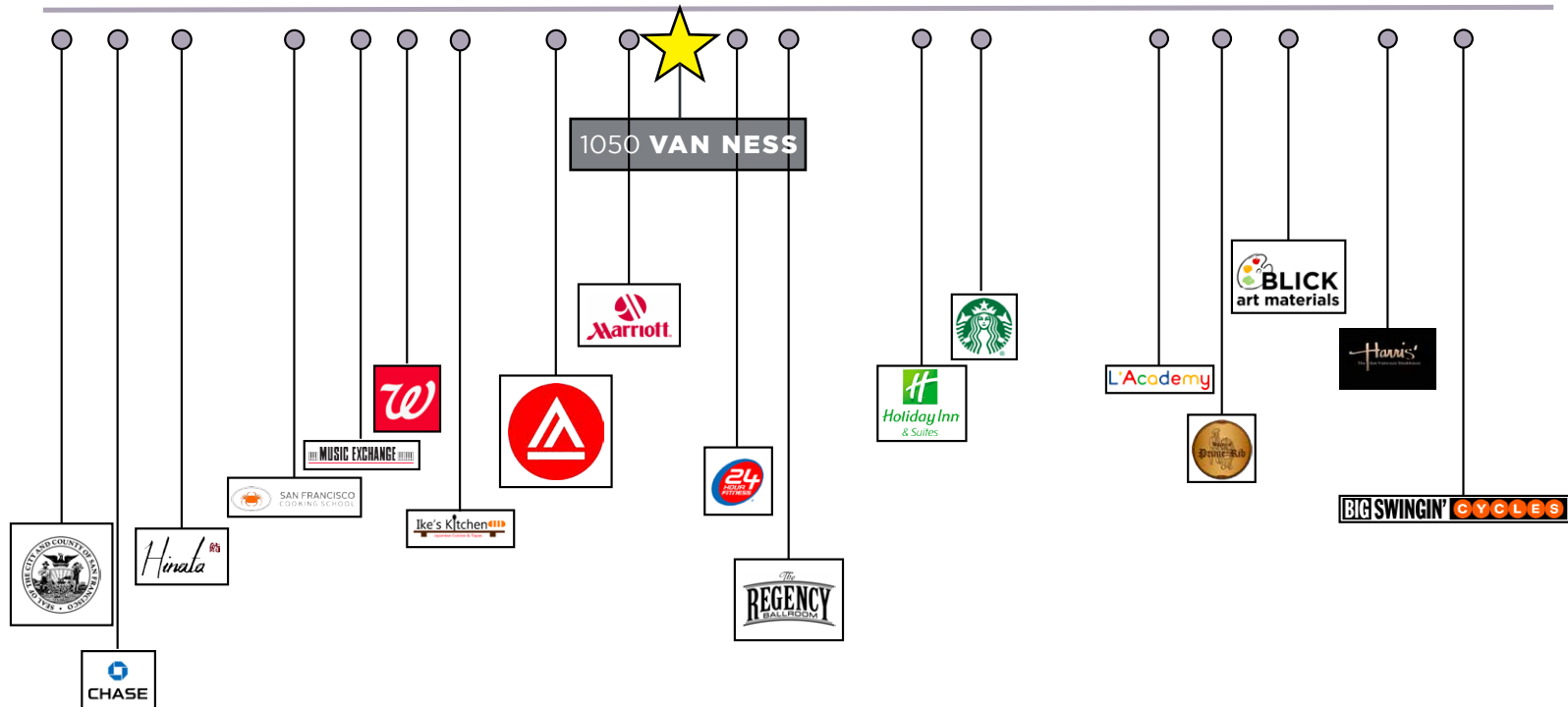
FEATURES

- +/-3,500 sq. ft.
- Existing Type 1 hood
- Bar area and Type 47 license available
- Newly remodeled two years ago- great condition
- Located on the ground floor of the new Courtyard by Marriott (157 rooms)
- Across from CPMC Van Ness Hospital and medical buildings (500,000 sq. ft. of office space)
- Van Ness is undergoing an improvement project in which bus lanes, sidewalks, lighting, and landscaping are all being upgraded (Completed in 2021)
- Contact Agent for more information

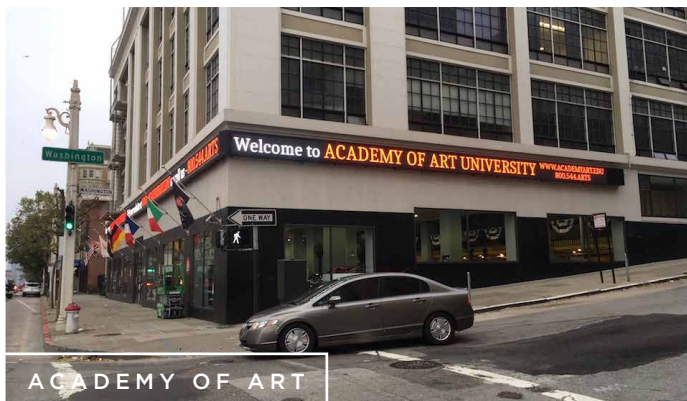




VAN NESS AVENUE



1050 VAN NESS | NEIGHBORHOOD



The logo for Maven Properties, featuring the word "maven" in a lowercase serif font, with "RETAIL • OFFICE • INDUSTRIAL" in a smaller, uppercase sans-serif font below it. The logo is centered within a white square border.

maven
RETAIL • OFFICE • INDUSTRIAL

1050 VAN NESS

SAN FRANCISCO • CALIFORNIA

JACKLYN ARZIO

office 510.413.7070

jacklyn@mavenproperties.com

DRE #01308296

NOTICE: This information has been secured from sources we believe to be reliable but we make no representations, warranties, express or implied, as to the accuracy of the information. Listing broker has been given enough information to provide only a preliminary interest in the property. The materials are not to be considered fact. The information contained herein is not a substitute for thorough due diligence investigation. References to square footage, zoning, use, or age are approximate. Please contact the San Francisco Planning Department to verify zoning at (415) 558-6378, as neither broker or landlord represent that this space is suitable for your use. Tenant or Buyer must verify the information at their own expense and bears all the risk for any inaccuracies. By receiving these materials you are agreeing to the disclaimers set forth herein. DRE#01878802

466 Green Street Suite #203 | San Francisco, CA 94133 | 415.781.7700