

1823

DIVISADERO

SAN FRANCISCO

1823



yogaworks

FOR LEASE

maven
RETAIL

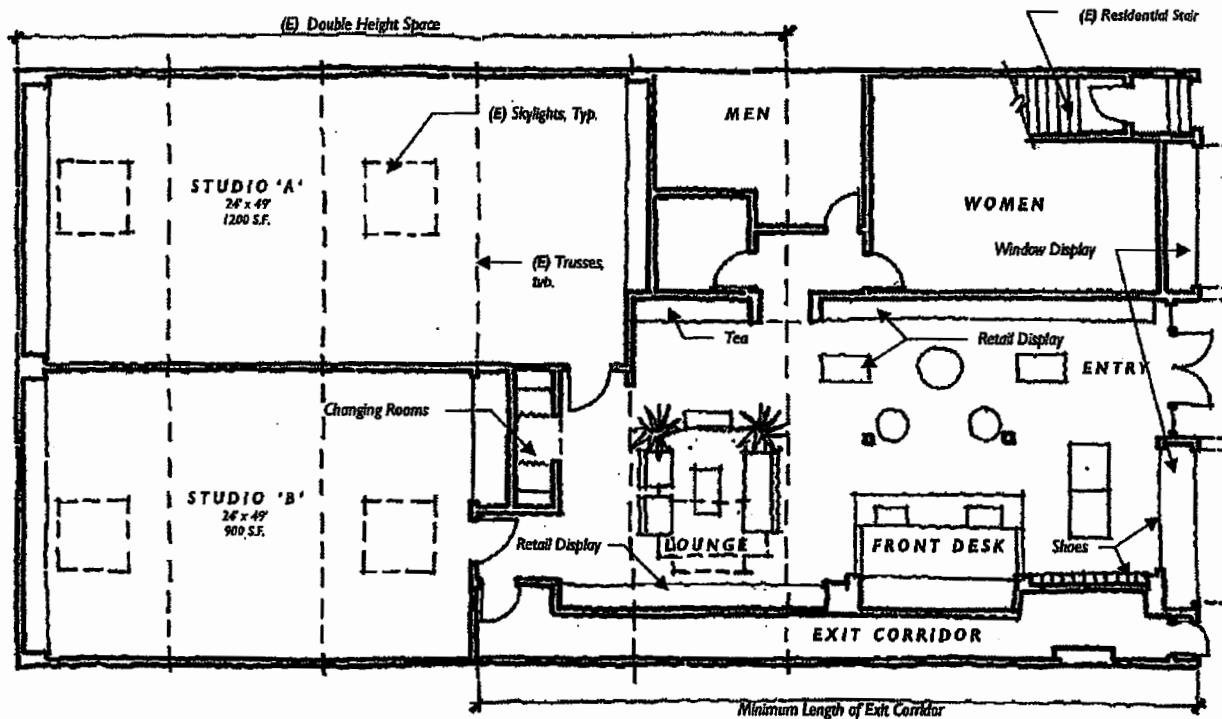
PAM
MENDELSON
415.404.5650

SARAH
BRETT SCHWARTZ
415.404.9999

www.mavenproperties.com • BRE #01878502

• SculptWorks • Private Sessions

maven
RETAIL



FEATURES

- 5,000 sq.ft. on ground - possibility to extend on 2nd level (1,200 sq.ft.)
- Modern wide open floor plan
- Extra Wide storefront
- Retrofitted
- Built out ADA showers/restrooms
- Possibility to expand on the level above
- Lots of natural light through storefront/skylights





maven
RETAIL



GARIBALDIS RESTAURANT



SF ATHLETIC CLUB



CUMAICA COFFEE



ELIZA'S



1823
DIVISADERO
SAN FRANCISCO



1823

DIVISADERO

SAN FRANCISCO

maven
RETAIL • OFFICE • INDUSTRIAL

SARAH BRETT SCHWARTZ

office 415.404.6959

sarah@mavenproperties.com

DRE #01903152

PAM MENDELSON

office 415.404.6650

pam@mavenproperties.com

DRE #00953050

NOTICE: This information has been secured from sources we believe to be reliable but we make no representations, warranties, express or implied, as to the accuracy of the information. Listing broker has been given enough information to provide only a preliminary interest in the property. The materials are not to be considered fact. The information contained herein is not a substitute for thorough due diligence investigation. References to square footage, zoning, use, or age are approximate. Please contact the San Francisco Planning Department to verify zoning at (415) 558-6378, as neither broker or landlord represent that this space is suitable for your use. Tenant or Buyer must verify the information at their own expense and bears all the risk for any inaccuracies. By receiving these materials you are agreeing to the disclaimers set forth herein. DRE#01878802

466 Green Street Suite #203 | San Francisco, CA 94133 | 415.781.7700