



CONFIDENTIAL AVAILABILITY. PLEASE DO NOT DISTURB THE OCCUPANTS.



722 Montgomery  
San Francisco | California

maven  
RETAIL



722 Montgomery







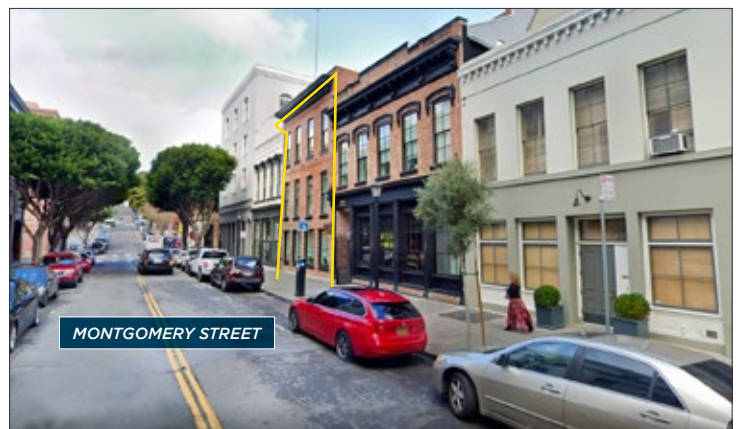
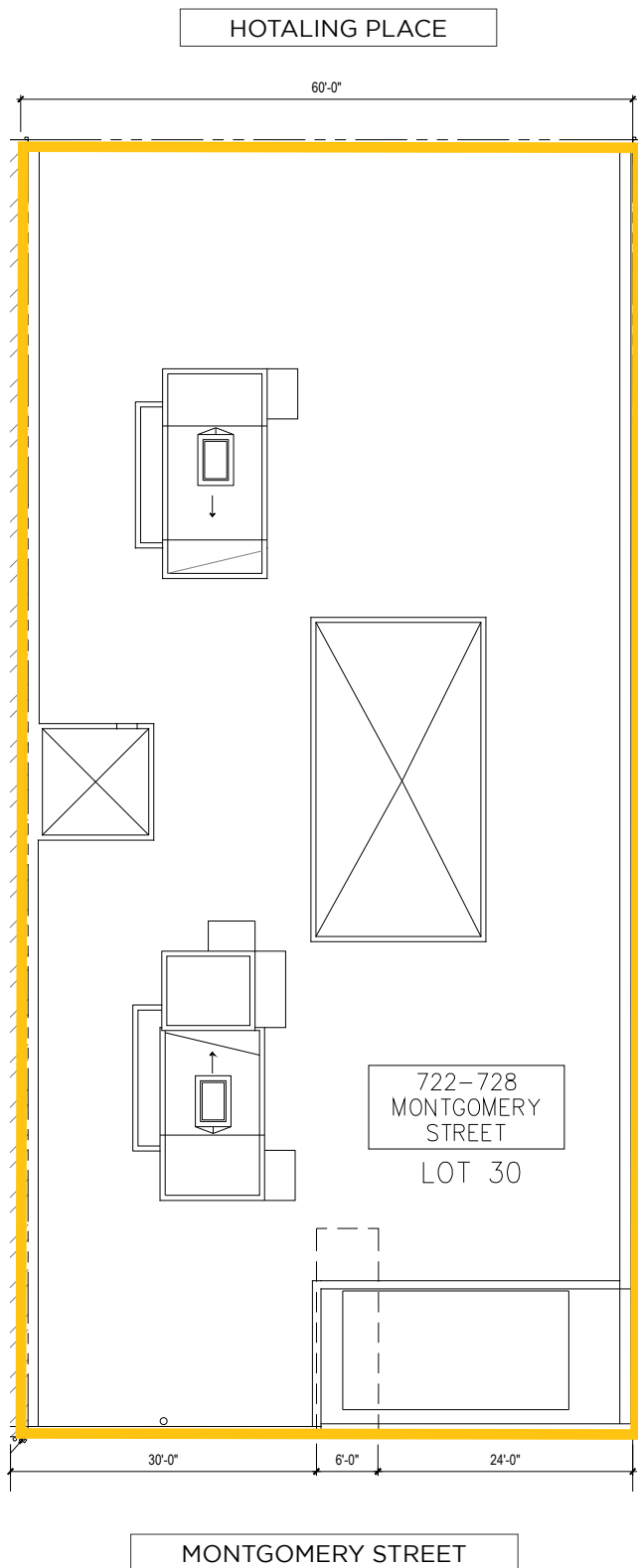
## Features

---

- 1,663 SF on ground + 1,704 SF on the basement level
- Beautiful Landmark brick building situated in historic Jackson Square
- Fully remodeled by current tenant
- Wide Storefront with large windows
- Neighbors include: Shinola, Zimmermann, Allbirds, Isabel Marant, Aesop, Fjallraven and restaurants Cotogna, Quince, Nico, Kusakabe and Verjus

# 722 Montgomery

## Floor Plan



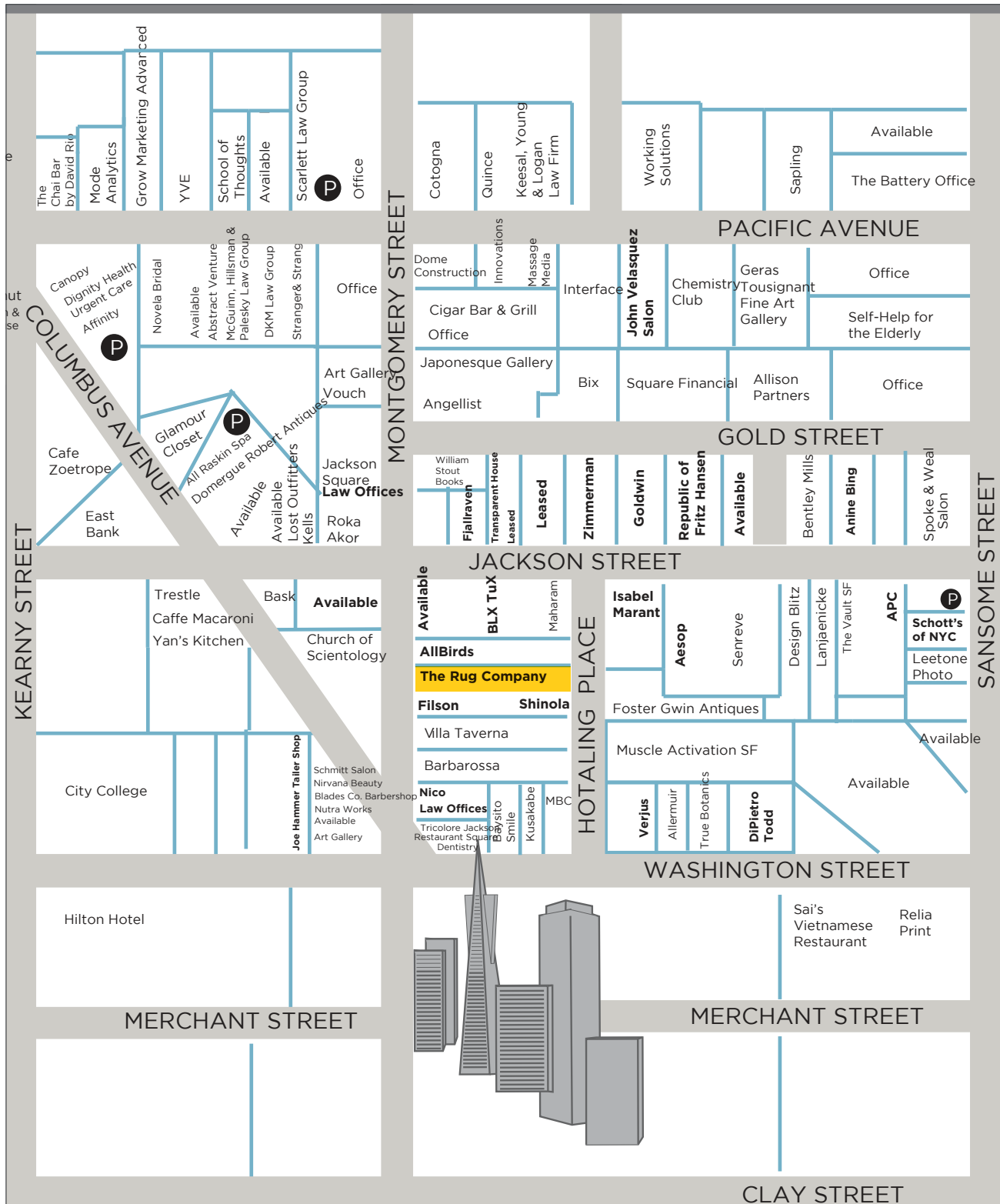
# Neighborhood



**SHINOLA**

*allbirds*

**diPIETRO TODD**  
SALONS+ACADEMY

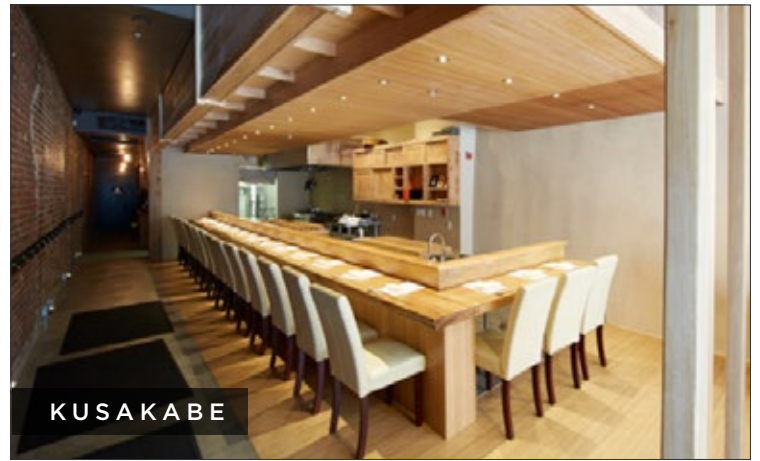


ZIMMERMANN

**FILSON**  
SINCE 1897

**Aēsop. A.P.C.**









maven  
RETAIL



**PAM MENDELSON**

office 415.404.6650

pam@mavenproperties.com

DRE #00953050

**ARIANE GIRARD**

office 415.936.6806

ariane@mavenproperties.com

DRE #02057293

**ARIAN AHMADIAN**

office 212.804.8870

arian@maddoxretail.com

NOTICE: This information has been secured from sources we believe to be reliable but we make no representations, warranties, express or implied, as to the accuracy of the information. Listing broker has been given enough information to provide only a preliminary interest in the property. The materials are not to be considered fact. The information contained herein is not a substitute for thorough due diligence investigation. References to square footage, zoning, use, or age are approximate. Please contact the San Francisco Planning Department to verify zoning at (415) 558-6378, as neither broker or landlord represent that this space is suitable for your use. Tenant or Buyer must verify the information at their own expense and bears all the risk for any inaccuracies. By receiving these materials you are agreeing to the disclaimers set forth herein. DRE#01878802