

*Hayes Valley*  
1699 MARKET STREET  
SAN FRANCISCO, CA

1699 MARKET

RETAIL/RESTAURANT/FITNESS OPPORTUNITY

+/- 4,000 SF | CAN BE DEMISED TO +/- 1,000 SF & +/- 3,000 SF

ALI MCEVOY [ali@mavenproperties.com](mailto:ali@mavenproperties.com) | PAMELA MENDELSON [pam@mavenproperties.com](mailto:pam@mavenproperties.com)

**maven**  
RETAIL





## FEATURES

- +/- 1,000 SF - 4,000 SF Demisable
- Potential outdoor seating
- Ceiling heights 18' slab to slab, with massive street frontage
- At the base of a 9 story tower with 160 luxury apartment homes
- Excellent Visibility from Market & Valencia Streets
- Close to many Hayes Valley and Valencia shops & restaurants
- Close proximity to BART/MUNI
- Available Immediately





HIGH CEILINGS



WIDE STOREFRONT



NEW CONSTRUCTION





#### THE OPPORTUNITY

New build restaurant/retail opportunity at The Rise, a recently completed development project located at the intersection of Market Street and Valencia Street corridors.

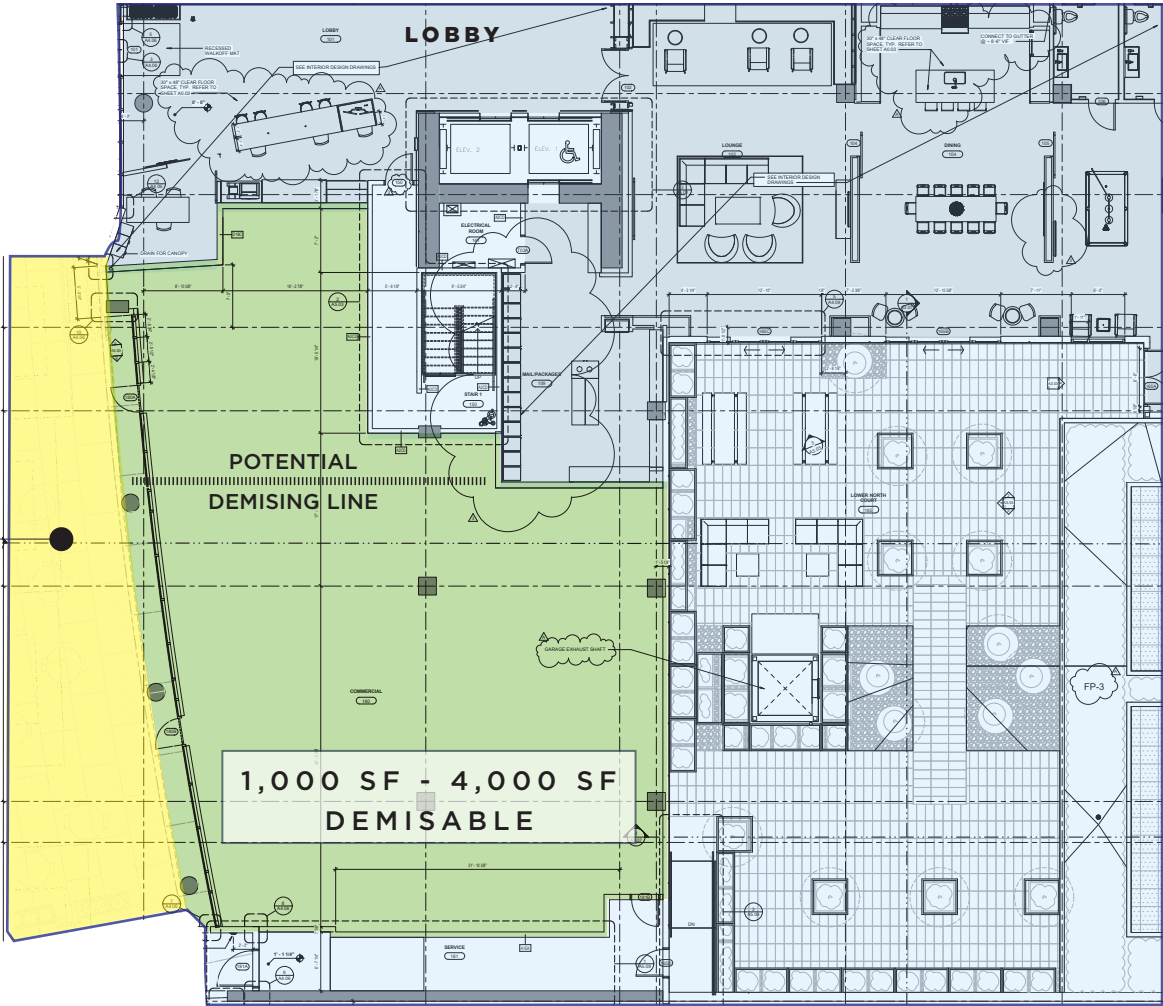
The 4,000 SF ground floor retail space features high ceilings, a flexible floorplan (1,000 or 3,000 SF demising options), an extra-wide storefront, and adjacent spacious outdoor patio.

The surrounding Upper Market / Valencia / Hayes Valley neighborhoods are known for both daytime business and a vibrant nightlife.

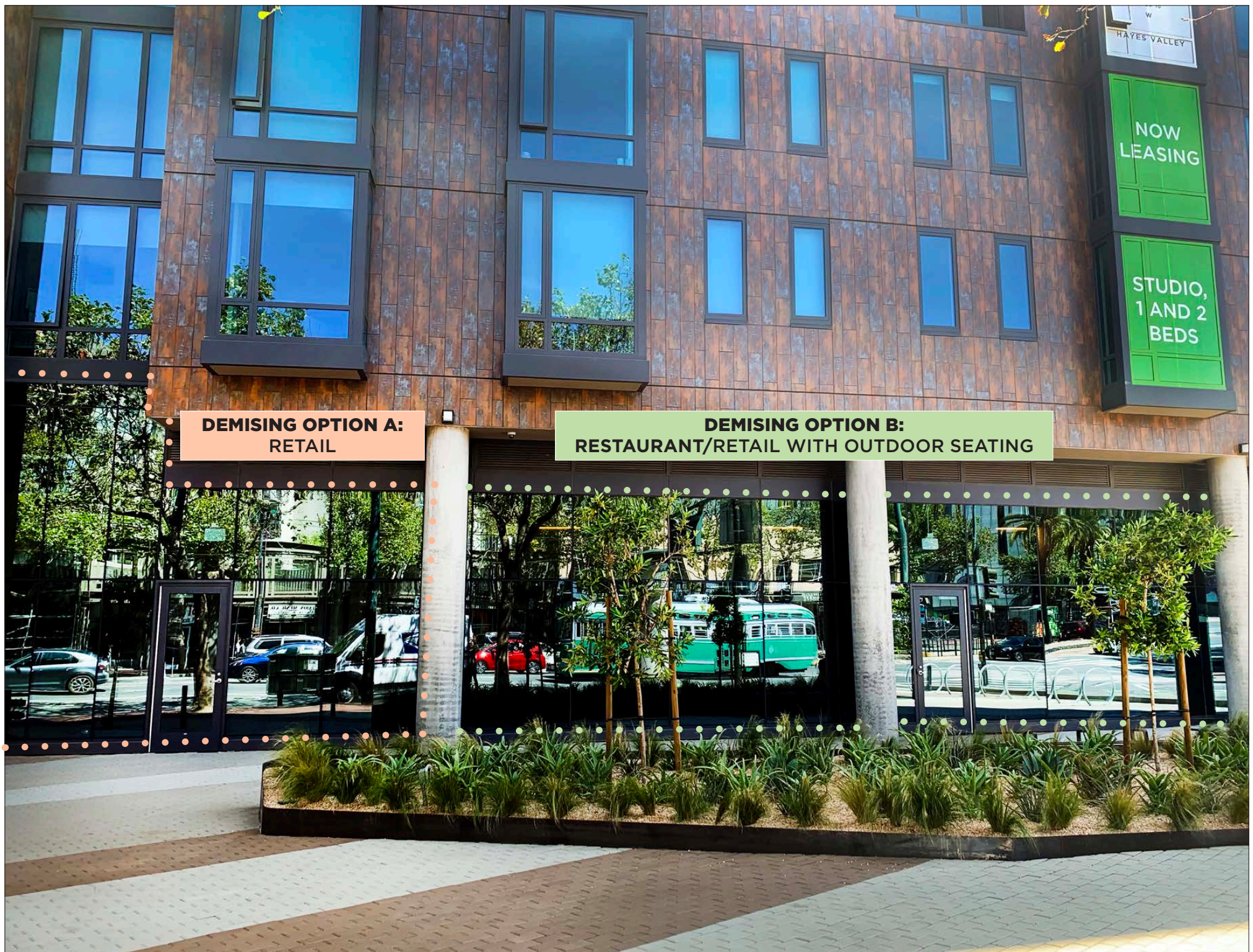
Prized restaurants such as Zuni, Rich Table, and A Mano lie only steps away, and lively boutiques such as Claire V, Allbirds, and Parachute draw shoppers to the area. The Market Street corridor is undergoing rapid transformation and is one of the City's finest housing hubs.

# FLOOR PLAN

POTENTIAL  
FOR  
OUTSIDE  
PATIO  
SEATING







**DEMISING OPTION A:  
RETAIL**

**DEMISING OPTION B:  
RESTAURANT/RETAIL WITH OUTDOOR SEATING**





**WISE SONS**  
JEWISH DELICATESSEN

HAYES VALLEY BAKEWORKS  
SF OPERA

**WHOLE FOODS**  
MARKET

BUCK MASON  
CREDO

BIRBA  
DOUBLE DECKER

MONSIEUR BENJAMIN

DAVIES SYMPHONY HALL

UCCELLO LOUNGE

ANDERSEN BAKERY



SALT & STRAW

OAK+FORT

SOUVLAKA

RITUAL COFFEE

A MANO

BLUE BOTTLE COFFEE

LEERS ROS  
NOJO RAMEN



THE MADRIGAL

HOTSPOT

Jikasei MENSHO

CADILLAC BAR & GRILL

ALLSTAR DONUTS & SANDWICH

CUMAICA: ARTESANOS DEL CAFE

Peet's Coffee

CHANTAL GUILLON

MERCURY CAFE

BAIANO PIZZERIA



ZUNI

ESPETUS CHURRASCARIA  
SPICE OF AMERICA

EQUINOX

GRANDMA'S DELI & CAFE

DON RAMON'S MEXICAN RESTAURANT

SUSHI ONDO

TAQUERIA CAZADORES



1699  
MARKET STREET

MARTUNI'S  
san francisco | piano bar

DESTINO  
SUSHI ZONE

ORBIT ROOM

Kantine

THE MINT KARAOKE LOUNGE

ZEITGEIST

WALK/BIKE/TRANSIT SCORE



99

WALK SCORE



97

BIKE SCORE



100

TRANSIT SCORE

BUS LINES: 6, 7, 14, 49



RICH TABLE



THE ITALIAN  
HOMEMADE COMPANY



MARTUNI'S



DAVIS SYMPHONY HALL



A MAMO



CIVIC CENTER



ZUNI CAFE



CHRISTOPHER E. CHOCOLATES



CLARE V

## UPPER MARKET/ HAYES VALLEY

**At the gateway to Hayes Valley, The Mission and Upper Market, 1699 Market will provide the perfect place to dine and relax, inside or outside, from morning to night.**

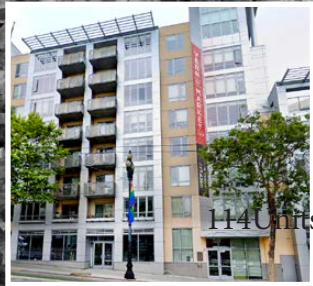
It is central to all of San Francisco and the surrounding communities, whether via the two nearby BART stations, the North-South bike route on Valencia Street, the F-Line streetcar that runs up and down Market Street or any of the ten Muni bus lines that run in front of 1699 Market. Customers of 1699 Market will find that this location is easily accessible, whether by car via the nearby 101 Highway exit, BART, Muni, biking or walking.



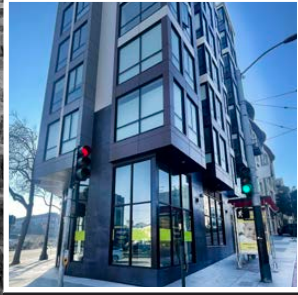
# NEARBY DEVELOPMENT PROJECT

Octavia Street

Gough Street



**1844 MARKET**  
114 APARTMENTS



**1700 MARKET**  
42 LUXURY APARTMENTS



**1554 MARKET**  
109 CONDOS



**100 VAN NESS**  
400 APARTMENTS



**1629 MARKET**  
579 APARTMENTS



**30 VAN NESS**  
418 APARTMENTS



**1699 MARKET**  
160 APARTMENTS



**8 OCTAVIA**  
37 CONDOS

Market Street

Van Ness Avenue





# DEMOGRAPHIC



**73%**  
Median Age

The demographic living in the vicinity of 1699 Market is highly educated with high per capita income. This demographic tends to eat out and shop more.



**83%**  
White Collar



**\$96,840**  
Per Capita Income



**73%**  
Bachelor's/Grad/  
Prof Degree



**\$121,976**  
Median Household  
Income



Average daily car volumes are between 30,000-50,000 cars per day.





## Contact

### **ALI MCEVOY**

office 415.312.5191

[ali@mavenproperties.com](mailto:ali@mavenproperties.com)

DRE #01930635

### **PAMELA MENDELSON**

Office 415.404.6650

[pam@mavenproperties.com](mailto:pam@mavenproperties.com)

DRE #00953050

NOTICE: This information has been secured from sources we believe to be reliable but we make no representations, warranties, express or implied, as to the accuracy of the information. Listing broker has been given enough information to provide only a preliminary interest in the property. The materials are not to be considered fact. The information contained herein is not a substitute for thorough due diligence investigation. References to square footage, zoning, use, or age are approximate. Please contact the San Francisco Planning Department to verify zoning at (415) 558-6378, as neither broker or landlord represent that this space is suitable for your use. Tenant or Buyer must verify the information at their own expense and bears all the risk for any inaccuracies. By receiving these materials you are agreeing to the disclaimers set forth herein. DRE#01878802

---

466 Green Street Suite #203

San Francisco, CA 94133

415-781-770

[www.mavenproperties.com](http://www.mavenproperties.com)