

237 CHURCH

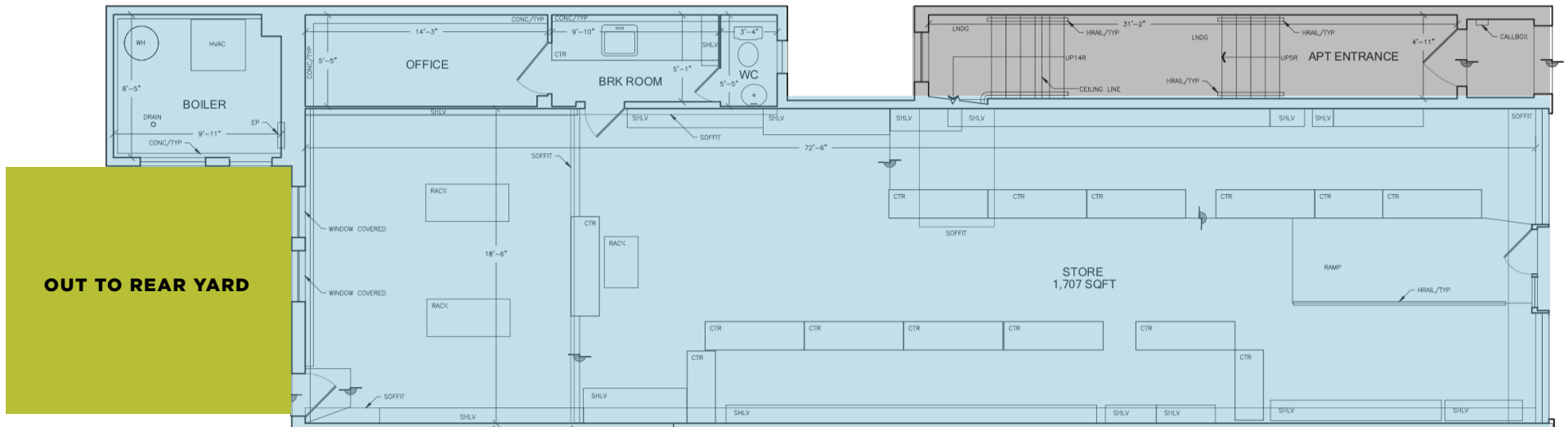
SAN FRANCISCO, CALIFORNIA



maven
RETAIL

237 CHURCH

SAN FRANCISCO, CALIFORNIA



FEATURES

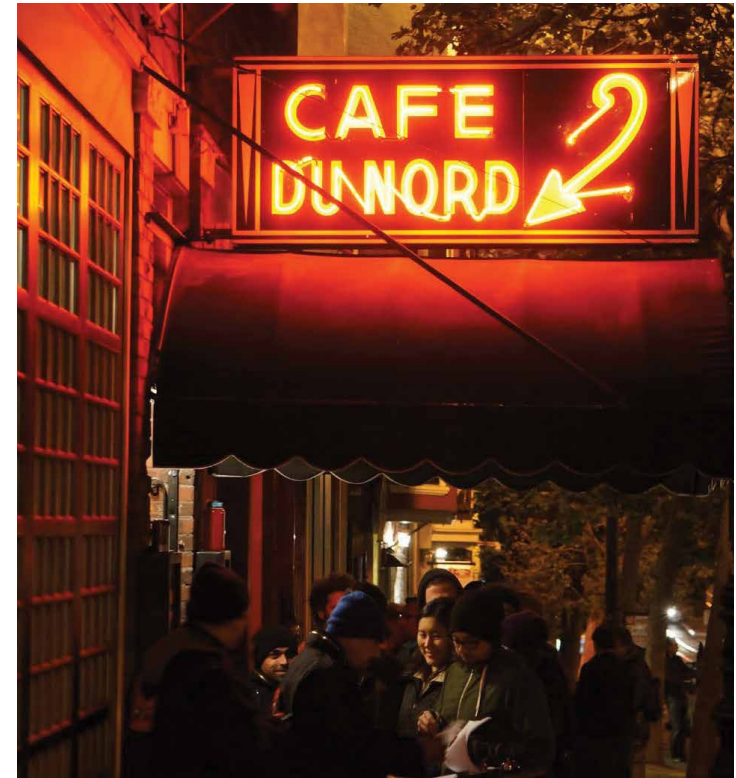
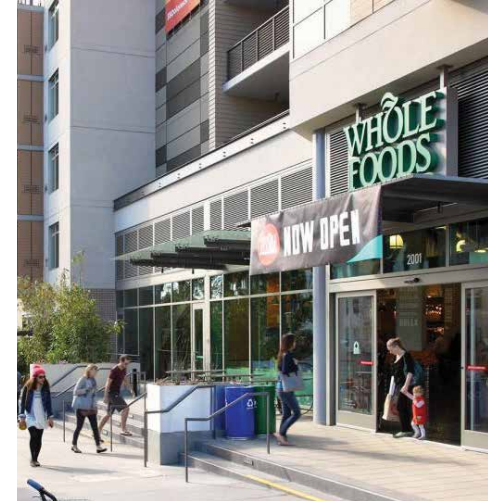
- Approximately 1,707 SF
- High Ceilings
- Wide storefront
- Great retail corridor
- High visibility location
- Easily accessible via public transit
- Shared rear yard
- Nearby businesses include Verve Coffee Roasters, Woodhouse Fish, Ace Hardware, Il Casaro Pizzeria and more.

maven
RETAIL

237 CHURCH

SAN FRANCISCO, CALIFORNIA

237 Church Street is located on the Market Street side of the Duboce Triangle, only a few blocks from the bars and restaurants of Lower Haight, the unique retail, nightlife and culture of Castro Street, and the vibrant Mission district. This space near the intersection of Market and Church Streets has great visibility from vehicular traffic, and is easily accessible via eight different bus and lightrail lines that all pass through or above Church Street Station.



237 CHURCH

SAN FRANCISCO, CALIFORNIA



maven
RETAIL

UPPER MARKET



237 CHURCH

SAN FRANCISCO, CALIFORNIA

maven
RETAIL • OFFICE • INDUSTRIAL

SARAH BRETT SCHWARTZ
office 415.404.6959
sarah@mavenproperties.com
BRE #01903152

PAM MENDELSON
office 415.404.6650
pam@mavenproperties.com
BRE #00953050

NOTICE: This information has been secured from sources we believe to be reliable but we make no representations, warranties, express or implied, as to the accuracy of the information. Listing broker has been given enough information to provide only a preliminary interest in the property. The materials are not to be considered fact. The information contained herein is not a substitute for thorough due diligence investigation. References to square footage, zoning, use, or age are approximate. Please contact the San Francisco Planning Department to verify zoning at (415) 558-6378, as neither broker or landlord represent that this space is suitable for your use. Tenant or Buyer must verify the information at their own expense and bears all the risk for any inaccuracies. By receiving these materials you are agreeing to the disclaimers set forth herein. BRE#01878802

466 Green Street Suite #203 | San Francisco, CA 94133 | 415.781.7700