



**345 & 353 SUTTER**  
SAN FRANCISCO | CA

**TWO GROUND FLOOR  
RETAIL SPACES**

**maven**  
RETAIL

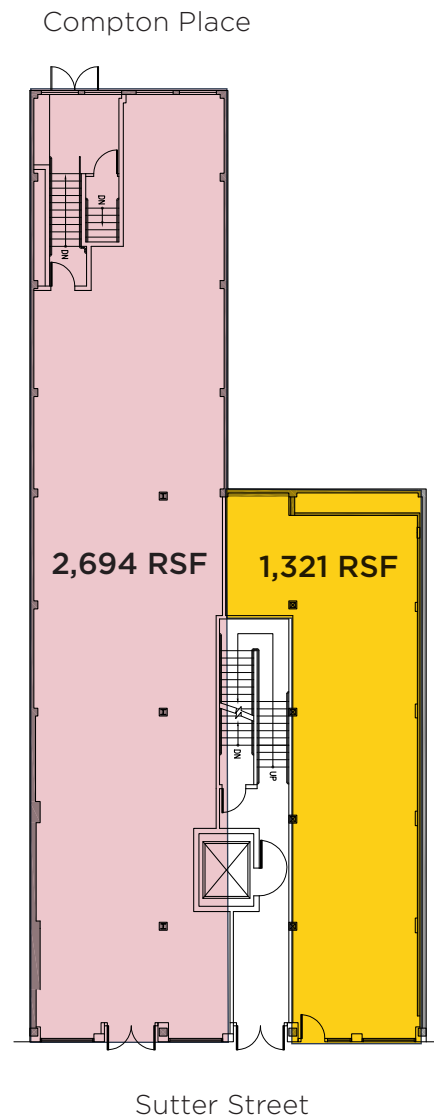
# FEATURES

**345 Sutter Street** offers two ground floor retail spaces consisting of +/- 1,321 and +/- 2,700 square feet with access to a full basement. Each space is highly visible by pedestrian and vehicle traffic, and features a wide storefront, vast windows, and 14' ceilings. The property has undergone a full renovation in recent years including a new elevator with basement access, upgraded electrical service, ADA improvements, and upgraded life safety systems. The retail spaces can be combined with the basement to provide an efficient 2-level space with rear delivery access from Campton Lane, all located in the core of the Union Square shopping district.

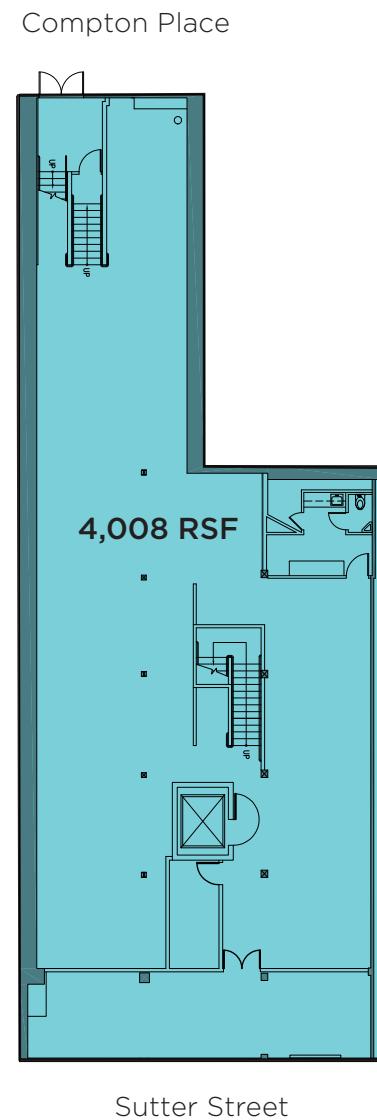
- +/- 1,321 SF & 2,700 SF Ground Floor Retail
- Located in the core of San Francisco's Union Square shopping district
- Fully renovated building including ADA, electrical, and life safety upgrades
- Vast display windows
- Wide storefront with excellent visibility
- Strong foot and vehicle traffic
- Elevator access to a full basement
- Rear delivery from Campton Place
- Excellent signage opportunity
- Close to public transportation and hourly/monthly parking



# Floor Plans



**GROUND FLOOR RETAIL**



**BASEMENT LEVEL**



# Union Square

345 & 353 Sutter is located on a bustling block in San Francisco's historic Union Square. The building is located on a street filled with trending shops and unique boutiques, many of them longtime destinations for Bay Area shoppers and tourists. This retail space also enjoys the proximity to major touristic landmarks such as the Powell St. Cable Car, Chinatown, and Union Square, as well as a multitude of nearby hotels and boarding accommodations. Several parking garages and public transportation are located nearby.



**ST. FRANCIS**



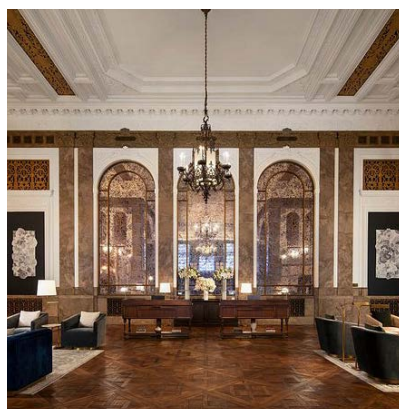
**RIMOWA**



**COLE HAAN**



**ALLAN EDMONDS**



**BEACON GRAND**



**DIOR**



**CHOTTO MATTE**



**APPLE**



**SHREVE & CO**

MASON STREET

POWELL STREET

STOCKTON STREET

GRANT STREET

KEARNY STREET

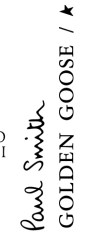
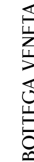
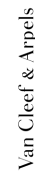
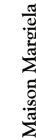
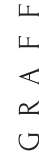
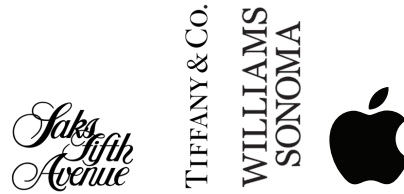
BUSH STREET

SUTTER STREET

POST STREET

GEARY STREET

O' FARRELL STREET





maven  
RETAIL

**PAMELA MENDELSON**

office 415.404.6650  
pam@mavenproperties.com  
DRE #00953050

**ALI MCEVOY**

office 415.404.7343  
ali@mavenproperties.com  
DRE #01930635

**HALEY KLEIN**

office 415.404.7330  
haley@mavenproperties.com  
DRE #01907308

**GLORIA NORDBAKK**

office 415.225.0626  
gloria@mavenproperties.com  
DRE #02207407

**SAGE MIRSKY**

office 907.821.1049  
sage@mavenproperties.com  
DRE #02238781

**345 & 353 SUTTER — FOR LEASE**

NOTICE: This information has been secured from sources we believe to be reliable but we make no representations, warranties, express or implied, as to the accuracy of the information. Listing broker has been given enough information to provide only a preliminary interest in the property. The materials are not to be considered fact. The information contained herein is not a substitute for thorough due diligence investigation. References to square footage, zoning, use, or age are approximate. Please contact the San Francisco Planning Department to verify zoning at (415) 558-6378, as neither broker or landlord represent that this space is suitable for your use. Tenant or Buyer must verify the information at their own expense and bears all the risk for any inaccuracies. By receiving these materials you are agreeing to the disclaimers set forth herein. DRE#01878802

466 Green Street Suite #203 | San Francisco, CA 94133 | 415-781-7700 | [www.mavenproperties.com](http://www.mavenproperties.com)