

76 | GOUGH

66 | GOUGH

76 & 66 GOUGH STREET
SAN FRANCISCO | CALIFORNIA

HAYES VALLEY RETAIL
608 SF & 210 SF



76 GOUGH

FEATURES

- +/- 608 SF
- Located on a busy corner in San Francisco's trendy Hayes Valley neighborhood
- Big display windows
- High ceilings
- High vehicle and pedestrian traffic
- Located near several MUNI and BART stops
- Nearby neighbors include Zuni Cafe, Rich Table, Cala, Blue Bottle Coffee, Bill Graham Auditorium and more!



66 GOUGH

FEATURES

- +/- 210 SF
- Charming retail space
- Natural Lighting
- Situated in the middle Upper Market, Lower Haight, and Civic Center
- Neighborhood tenants include: Espetus Brazilian Steakhouse, Zuni Cafe, and nearby hotels.

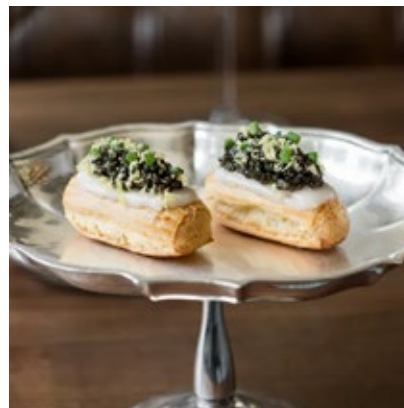


Hayes Valley/ Upper Market

Located in the heart of San Francisco, the Upper Market neighborhood offers easy access to local attractions, as well as quick transportation to many of the most well-known San Francisco landmarks. Considered one of the most burgeoning areas in San Francisco, Hayes Valley's rapid ascent as one of the Bay Area's hippest neighborhoods can be attributed to the vast array of high-end boutiques, restaurants, and bars that populate the city plaza



OAK + FORT



LE FANTASTIQUE



NOJO RAMEN TAVERN



A MANO



BLUE BOTTLE COFFEE



SALT & STRAW



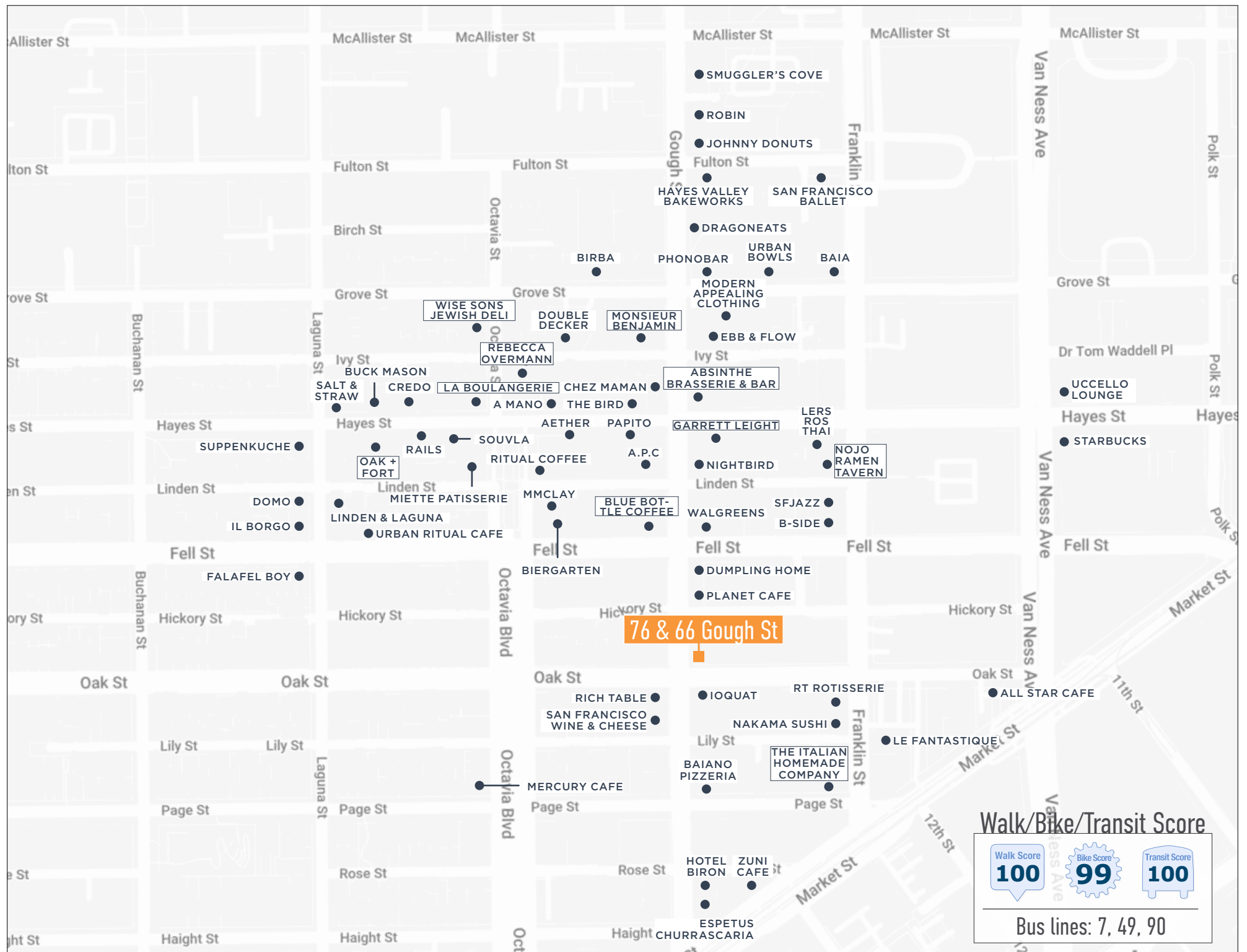
RITUAL COFFEE



RICH TABLE



BUCK MASON



The logo for Maven Retail, featuring the word "maven" in a serif font with "RETAIL" in a smaller, sans-serif font underneath, all in white on a dark square background.

maven
RETAIL

KRYSTAL CHANNICK

office 415.462.5940

krystal@mavenproperties.com

DRE #01969079

76 & 66 GOUGH STREET — FOR LEASE

NOTICE: This information has been secured from sources we believe to be reliable but we make no representations, warranties, express or implied, as to the accuracy of the information. Listing broker has been given enough information to provide only a preliminary interest in the property. The materials are not to be considered fact. The information contained herein is not a substitute for thorough due diligence investigation. References to square footage, zoning, use, or age are approximate. Please contact the San Francisco Planning Department to verify zoning at (415) 558-6378, as neither broker or landlord represent that this space is suitable for your use. Tenant or Buyer must verify the information at their own expense and bears all the risk for any inaccuracies. By receiving these materials you are agreeing to the disclaimers set forth herein. DRE#0187880

466 Green Street Suite #203 | San Francisco, CA 94133 | 415-781-7700 | www.mavenproperties.com