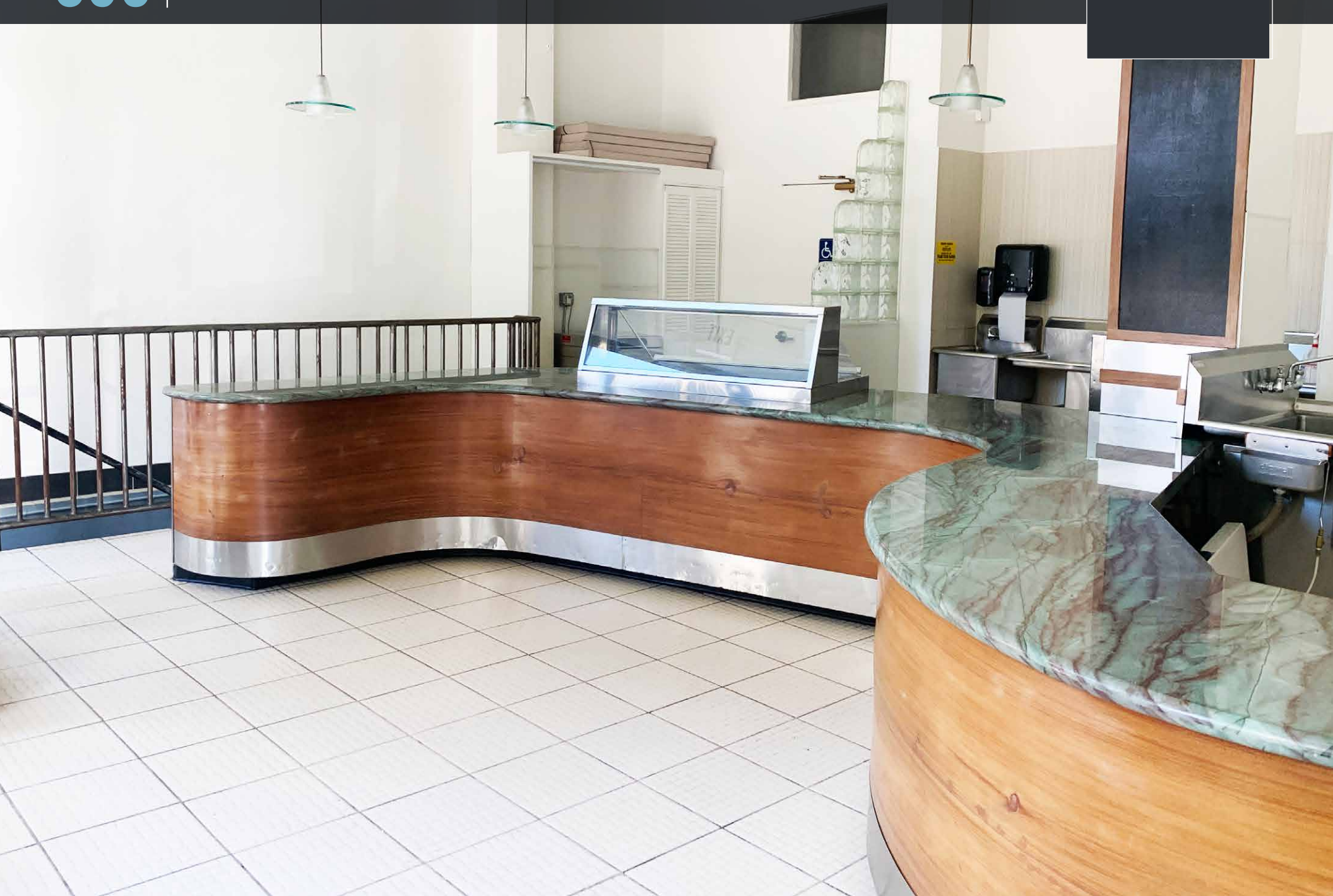


835

Geary Street
SAN FRANCISCO, CA

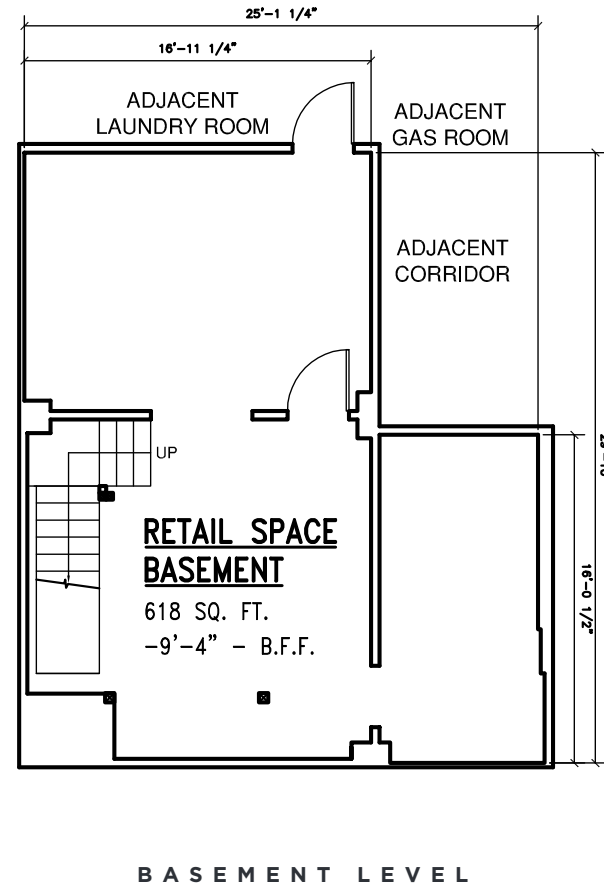
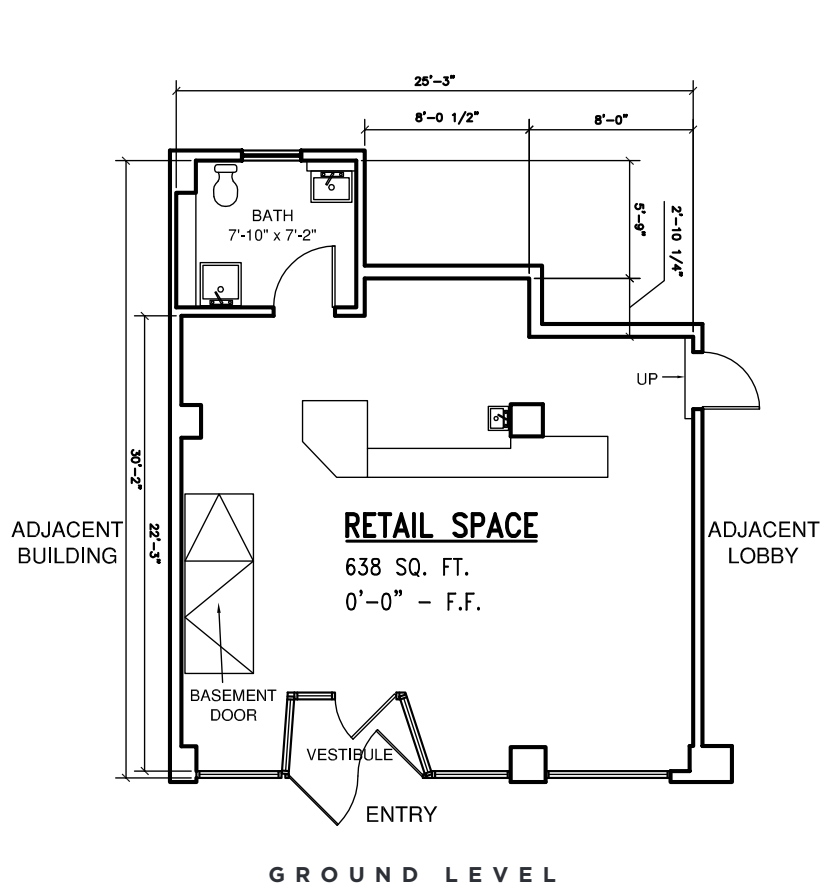
SECOND GENERATION CAFÉ SPACE

maven
RETAIL



FEATURES

- +/- 638 SF plus +/- 618 SF basement
- Abundant Natural Lighting
- Existing Café Infrastructure with Walk-In Refrigerator
- Wide Storefront
- Great Signage Potential
- Nearby businesses include Jane on Larkin, Elephant Sushi, Lers Ros, The Saratoga, Mr. Holmes Bakehouse, and many more





Market Street

Leavenworth Street

Hyde Street

Larkin Street

Polk Street

Federal Building and U.S. Courthouse

NeWa

Chico's Pizza

Tadu

The Zombie Village

Dong Baek

Nite Cap Bar

Lers Ros

Ellis Street

Lahore Karahi Pakistani

800 Larkin

O'Farrell Street

Maysoon's Pizza

Frisco Creamery

The HA-RA Club

Redford

Moulin Rouge

Elephant Sushi

Kung Fu Action Theatre

Mensho Tokyo SF

Angel Cafe & Deli

The Geary Club

Rum & Sugar

835 Geary Street
SAN FRANCISCO, CA

A La Turca

House of Thai

Geary Street

Rye

Pizza Hut

Anh Hong

Papi's SF

Los Hermanos Taqueria

Amsterdam Café

Edinburgh Castle Pub

The Royale

Post Street

Post Street





maven
RETAIL • OFFICE • INDUSTRIAL

835 | Geary Street
SAN FRANCISCO, CA

JOAN RUYLE

office 415.404.7313

joan@mavenproperties.com

DRE #02006025

NOTICE: This information has been secured from sources we believe to be reliable but we make no representations, warranties, express or implied, as to the accuracy of the information. Listing broker has been given enough information to provide only a preliminary interest in the property. The materials are not to be considered fact. The information contained herein is not a substitute for thorough due diligence investigation. References to square footage, zoning, use, or age are approximate. Please contact the San Francisco Planning Department to verify zoning at (415) 558-6378, as neither broker or landlord represent that this space is suitable for your use. Tenant or Buyer must verify the information at their own expense and bears all the risk for any inaccuracies. By receiving these materials you are agreeing to the disclaimers set forth herein. DRE#01878802

466 Green Street Suite #203 | San Francisco, CA 94133 | 415.781.7700