

253

CHURCH
STREET

SAN FRANCISCO

2,940 SF
SECOND
GENERATION
RESTAURANT
FOR LEASE

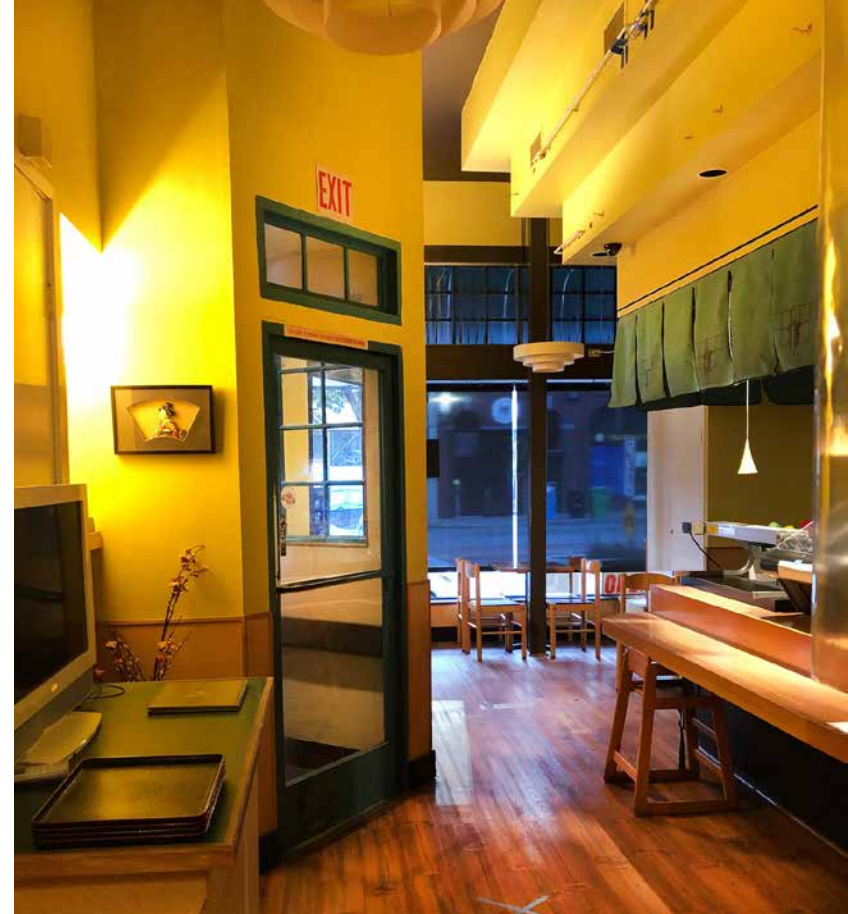


maven
RETAIL

253

CHURCH
STREET

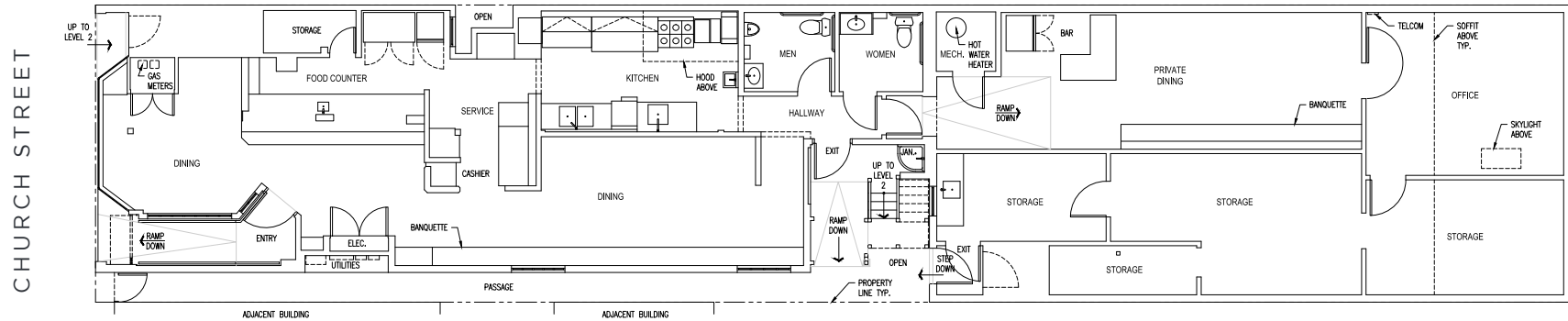
SAN FRANCISCO



253 CHURCH STREET

SAN FRANCISCO

FLOOR PLAN



FEATURES

- +/- 2,940 square feet
- Second generation restaurant infrastructure in place
- Prominent intersection with close proximity to Market Street transit
- High ceilings with great street presence
- Neighbors include Whole Foods Market, Safeway Shopping Center, Verve Coffee, Plant Therapy, Compass Real Estate, Boombox Fitness, Corepower Yoga, Il Casaro and more!





WHOLE FOODS



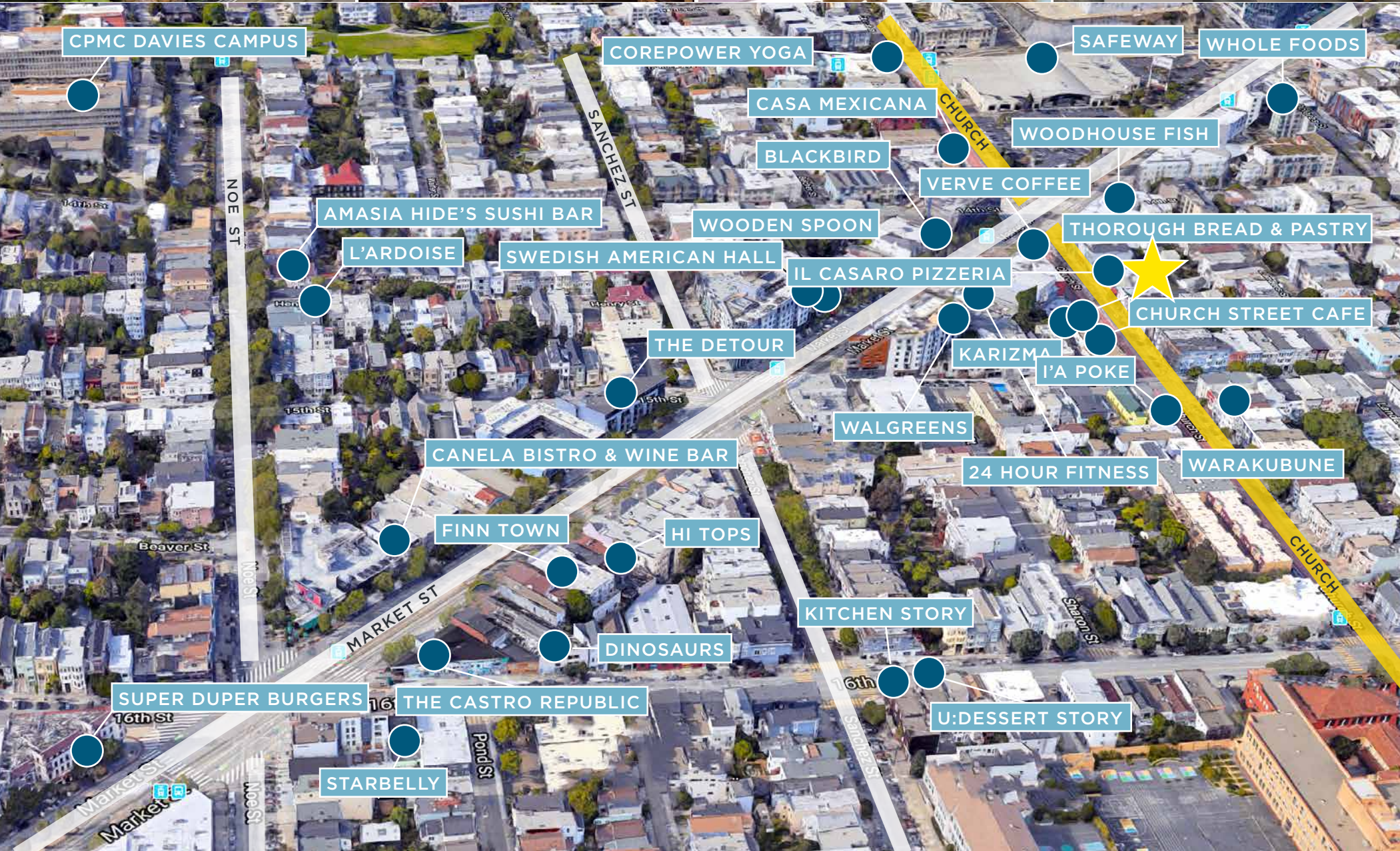
WOODHOUSE FISH



COREPOWER YOGA



APOTHECARIUM

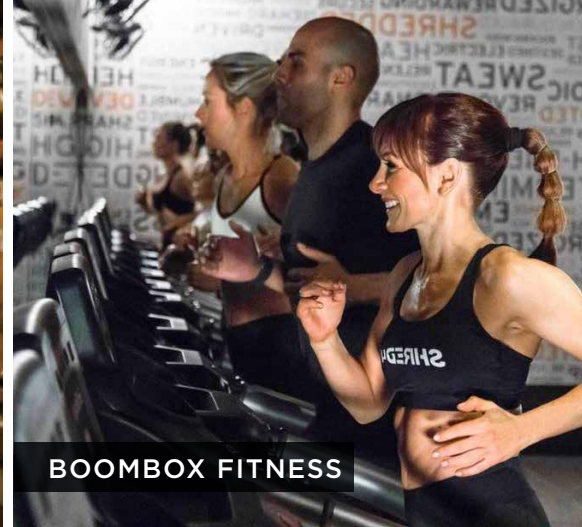




IL CASARO



CHURCHILL



BOOMBOX FITNESS



VERVE COFFEE

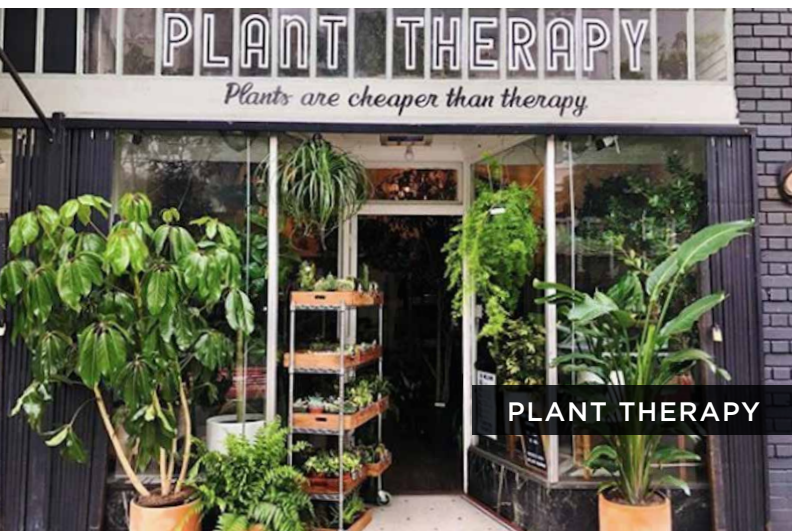
CHURCH & MARKET

SAN FRANCISCO, CA

Situated at one of the most prominent intersections in San Francisco, this fully built-out restaurant at Church & Market provides any incoming restaurateur with the ability to move into a turn-key, food zoned opportunity. Featuring type 1 venting and other FF&E currently in place, 253 Church can be made ready for a quick occupancy.



THOROUGH BREAD & PASTRY



PLANT THERAPY



KITCHEN STORY



COREPOWER YOGA



253
CHURCH
STREET
SAN FRANCISCO

HALEY KLEIN

office 415.404.7330

haley@mavenproperties.com

DRE #01907308

maven
RETAIL

NOTICE: This information has been secured from sources we believe to be reliable but we make no representations, warranties, express or implied, as to the accuracy of the information. Listing broker has been given enough information to provide only a preliminary interest in the property. The materials are not to be considered fact. The information contained herein is not a substitute for thorough due diligence investigation. References to square footage, zoning, use, or age are approximate. Please contact the San Francisco Planning Department to verify zoning at (415) 558-6378, as neither broker or landlord represent that this space is suitable for your use. Tenant or Buyer must verify the information at their own expense and bears all the risk for any inaccuracies. By receiving these materials you are agreeing to the disclaimers set forth herein. DRE#01878802