



RESTAURANT

311 CALIFORNIA STREET

maven  
RETAIL





- **2,486 SF**
- **Ground floor retail space in an iconic San Francisco building**
- **15ft ceilings**
- **Large display windows**
- **In the Financial District core with over 100,000 employees within ½ mile**
- **Excellent visibility and street presence**
- **Accessible from Battery and California Streets**
- **Surrounded by Jackson Square, SOMA, Chinatown, and North Beach neighborhoods**
- **Easy access to both the 311 California and 345 California Street office towers**
- **Convenient to BART, MUNI, Cable Cars, and parking garages**
- **Other retail tenant includes Tri Counties Bank**

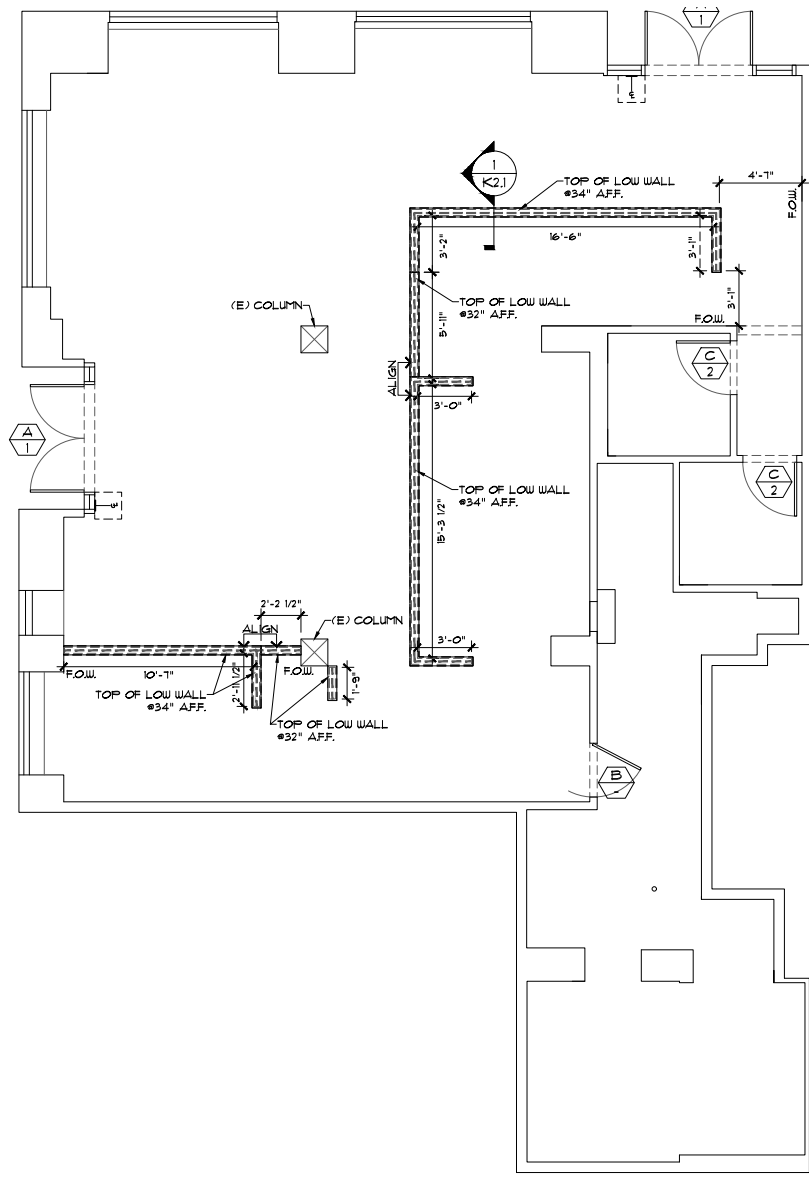
#### **FEATURES**





## FLOOR PLAN

CALIFORNIA STREET









# NEIGHBORHOOD





**PABU**



**THE SHOTA**



**TADICH GRILL**



**PERBACCO**



**MENDOCINO FARMS**



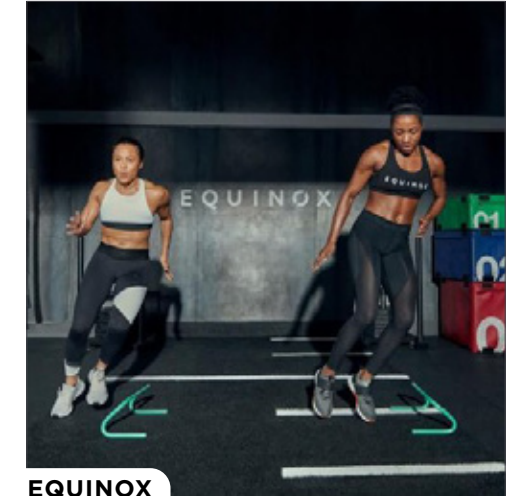
**PHILZ COFFEE**



**BLUESTONE LANE**



**THE TREASURY**



**EQUINOX**

## FINANCIAL DISTRICT

Former headquarters of the Dollar Steamship Company, the Robert Dollar Building has stood proudly on the southwest corner of Battery and California Streets for nearly a century. Centrally located, the property offers tenants a multitude of commuter and transportation options. The building is located within two blocks of Embarcadero Station for both BART and MUNI; San Francisco's famed California Street Cable Car line stops within steps of the building; the Ferry Terminal - offering ferry service to Marin and Alameda Counties is within four blocks; and many major bus lines stop within two blocks of the Building's front door. There are also 3,000 public parking stalls within a three-block radius of the property.

At 11 stories tall, the building boasts 89,965 total rentable square feet of office space with prominent adjoining retail space. The ornate detailed exterior adds to the buildings striking charm and timeless appeal. Surrounded by countless dining and service amenities, The Robert Dollar Building commands this bustling and highly energetic locale.





## Contact

### **PAM MENDELSON**

office 415.404.6650

[pam@mavenproperties.com](mailto:pam@mavenproperties.com)

DRE #00953050

### **CATHERINE MEUNIER**

office 415.806.5566

[catherine@mavenproperties.com](mailto:catherine@mavenproperties.com)

DRE #01843732

### **SANTINO DEROSE**

office 415.404.7337

[sd@mavenproperties.com](mailto:sd@mavenproperties.com)

DRE #01338326

NOTICE: This information has been secured from sources we believe to be reliable but we make no representations, warranties, express or implied, as to the accuracy of the information. Listing broker has been given enough information to provide only a preliminary interest in the property. The materials are not to be considered fact. The information contained herein is not a substitute for thorough due diligence investigation. References to square footage, zoning, use, or age are approximate. Please contact the San Francisco Planning Department to verify zoning at (415) 558-6378, as neither broker or landlord represent that this space is suitable for your use. Tenant or Buyer must verify the information at their own expense and bears all the risk for any inaccuracies. By receiving these materials you are agreeing to the disclaimers set forth herein. DRE#01878802

---

466 Green Street Suite #203

San Francisco, CA 94133

415-781-770

[www.mavenproperties.com](http://www.mavenproperties.com)