

2255

3RD STREET

SAN FRANCISCO, CA

8,282 SF AVAILABLE
FOR LEASE



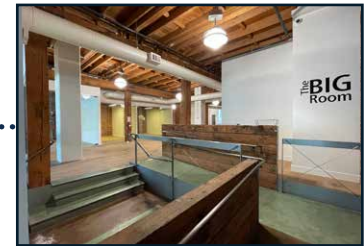
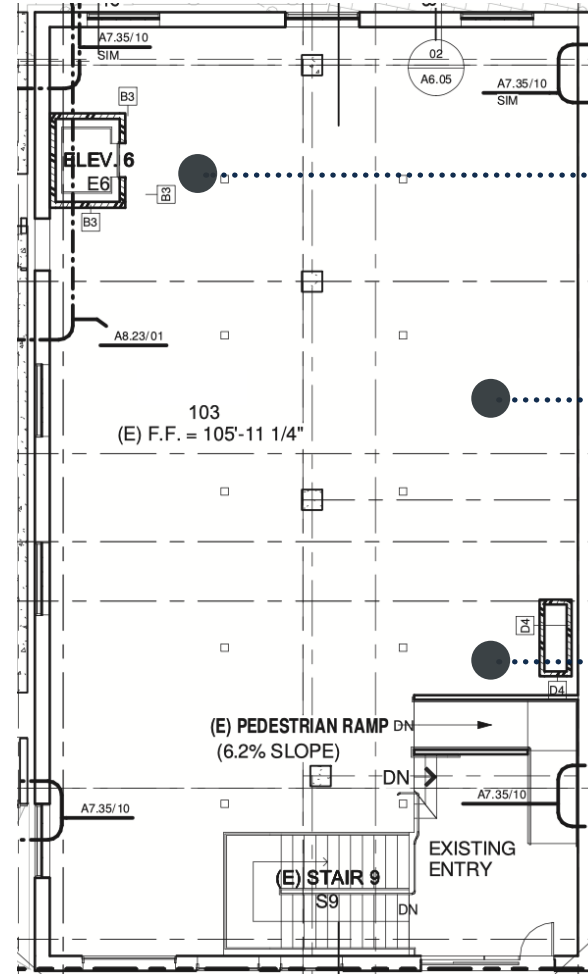
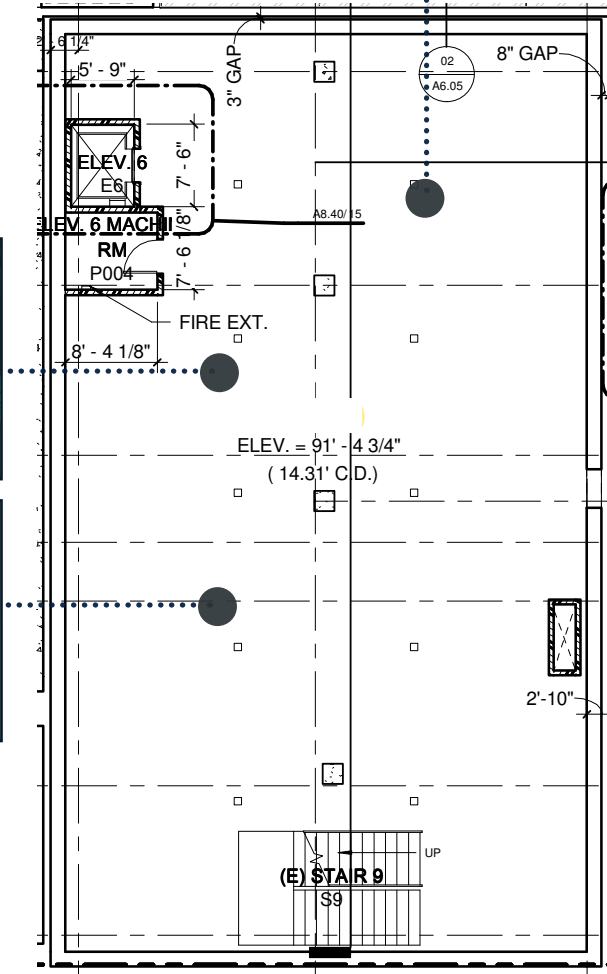
maven
RETAIL



FEATURES

- +/- 8,282 sq.ft.
- Brick & Timber with Industrial finishes
- Open floorplan
- Multi-level office/Can be demised
- Elevator
- High, exposed ceilings
- Ample windows and natural light
- Full kitchen
- Additional café/kitchenette space
- Perimeter offices
- Spacious meeting rooms
- Accessible restrooms
- UMU zoning
- Outdoor space
- Parking available

maven
RETAIL



FINANCIAL DISTRICT

SOUTH BEACH

ORACLE PARK

CHASE BANK

UCSF MEDICAL CENTER

MISSION RAY

WALGREENS

STARBUCKS

CHASE CENTER

MISSION ROCK

THE BOBA SHOP

MOSHI MOSHI

THE RAMP

THE SEA STAR

THIRD RAIL

LITTLE SWEET

STASHED

NEIGHBOR BAKEHOUSE

LONG BRIDGE PIZZA CO.

RICKSHAW BAGWORKS

MARCELLA'S LASAGNERIA

UNGRAFTED

MR. AND MRS. MISCELLANEOUS

MAGNOLIA BREWING

BRAZUCA GRILL

DAILY DRIVER

PICCINO

JUST FOR YOU CAFE

YIELD WINE BAR

HARD KNOX CAFE

PHILZ COFFEE

BESHARAM

HARMONIC BREWING

WALK SCORE

88

VERY WALKABLE

TRANSIT SCORE

66

GOOD TRANSIT

BIKE SCORE

97

BIKER'S PARADISE

TOTAL POPULATION

6,453



Dogpatch is San Francisco's most up-and-coming district and fastest growing neighborhood. One of the development hubs of the Bay Area, the district's population is said to continue to increase through at least 2025. Formally a ship-building hub dating back to the 1800s, the neighborhood is comprised of many rare and historically significant residential buildings, as well as several commercial, industrial, and civic buildings, most of which were constructed between 1860 and 1945.

maven
RETAIL



PICCINO



KUSAKABE



OLIVER'S BUTCHERY



THE RAMP



STASHED



RICKSHAW BAGWORKS



NEIGHBOR BAKEHOUSE



MUSEUM OF CRAFT & DESIGN

2255
3RD STREET
SAN FRANCISCO, CA

maven
RETAIL • OFFICE • INDUSTRIAL

DOMINIC MORBIDELLI
office 415.404.7314
dom@mavenproperties.com
DRE #02024348

JOAN RUYLE
415.404.7313
joan@mavenproperties.com
DRE #02006025

NOTICE: This information has been secured from sources we believe to be reliable but we make no representations, warranties, express or implied, as to the accuracy of the information. Listing broker has been given enough information to provide only a preliminary interest in the property. The materials are not to be considered fact. The information contained herein is not a substitute for thorough due diligence investigation. References to square footage, zoning, use, or age are approximate. Please contact the San Francisco Planning Department to verify zoning at (415) 558-6378, as neither broker or landlord represent that this space is suitable for your use. Tenant or Buyer must verify the information at their own expense and bears all the risk for any inaccuracies. By receiving these materials you are agreeing to the disclaimers set forth herein. DRE#01878802