

# 1000 Larkin

SAN FRANCISCO | CA

RESTAURANT & BAR OPPORTUNITY



maven  
RETAIL



# 1000 Larkin

SAN FRANCISCO | CA

**1000 Larkin** is a distinguished second-generation restaurant situated on a highly visible corner in the center of San Francisco. Constructed in 2016, this restaurant features brick, timber, and steel details brought together with custom millwork and floor-to-ceiling storefront windows. The space also includes a spacious kitchen with two full hoods, walk-in refrigeration, and equipment in place. Additional seating or private dinner/event space can be created in the adjacent space which features similar details, a full lower level, and an additional bathroom. 1000 Larkin sits near City Hall and the Civic Center, the new CPMC Hospital Van Ness Campus, Union Square, and public transportation. Rare opportunity to lease a magnificent space in a core San Francisco location.







Lower-level Dining Room & Bar with Elevator Access



1000 Larkin  
SAN FRANCISCO | CA



MAX. OCCUPANCY  
GROUND LEVEL 98

## FEATURES

- 2016 Restaurant Construction
- Equipment and trade fixtures in place
- Elevator
- Vast ceilings
- Custom millwork throughout
- High-visibility corner with floor-to-ceiling windows
- 75+ feet of street frontage
- Brick-and-timber feel with steel seismic details
- Custom Millwork and lighting throughout
- Vintage corner marquee signage
- Close proximity to City Hall, Herbst Theater, CPMC Hospital Van Ness Campus, and Union Square
- Public transportation (BART/Muni) nearby





## FLOOR PLAN



### 1000 LARKIN

1,904 SF Ground Floor

2,254 SF Lower Level

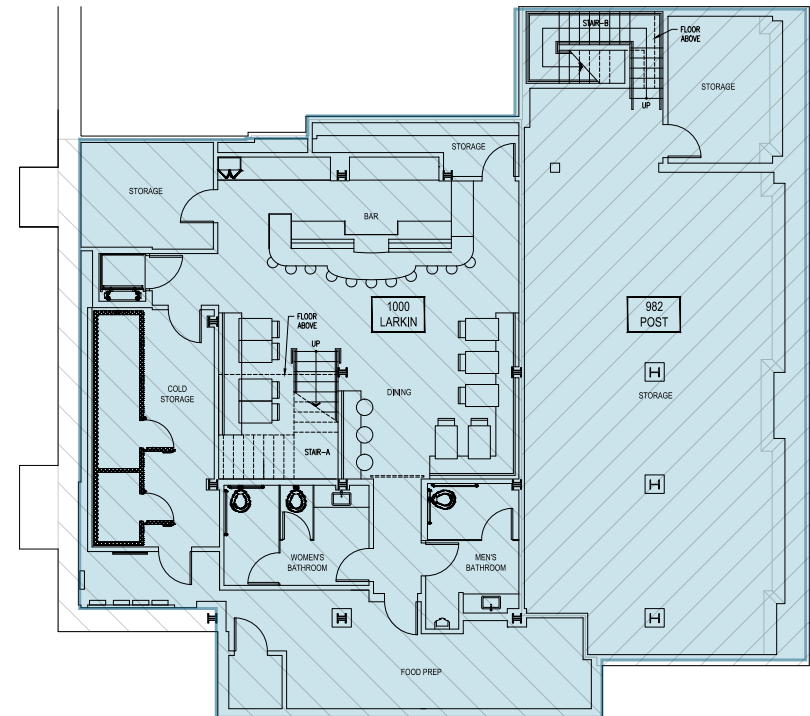
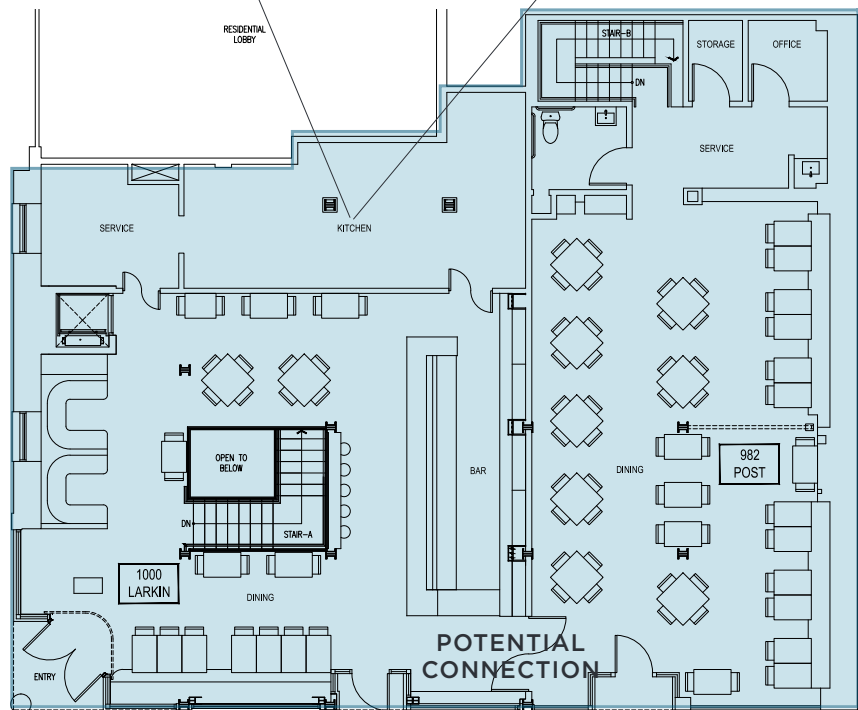
### 982 POST (ADJACENT EXPANSION SPACE)

1,523 SF Ground Floor

1,605 SF Lower Level

**Total Ground Floor:** 1,904 SF – 3,427 SF

**Total Lower Level:** 2,254 – 3,394 SF





# 1000 Larkin

SAN FRANCISCO | CA



CPMC Emergency Van Ness Campus

NOB HILL

Hotel Fairmont

The Huntington Hotel

FINANCIAL DISTRICT



Union Square

The Westin St. Francis

Hotel Spero

Hilton Union Square

Hotel Nikko

Macy's

Post Street

Polk Street

Larkin Street

Hyde Street

Eddy Street

Powell Station

Market Street

Mission Street

UC Hastings College of the Law

Herbst Theater

San Francisco City Hall

Civic Center Plaza

Bill Graham Civic Auditorium

War Memorial Opera House

Davis Symphony Hall

Civic Center Station



  
99

  
100

  
82





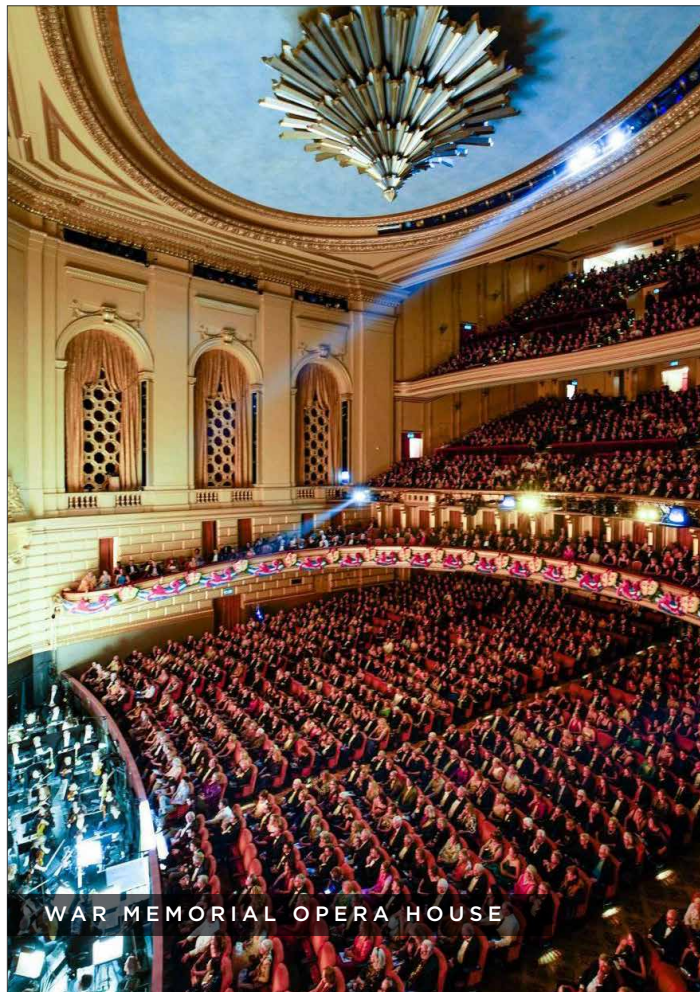
SAN FRANCISCO CITY HALL



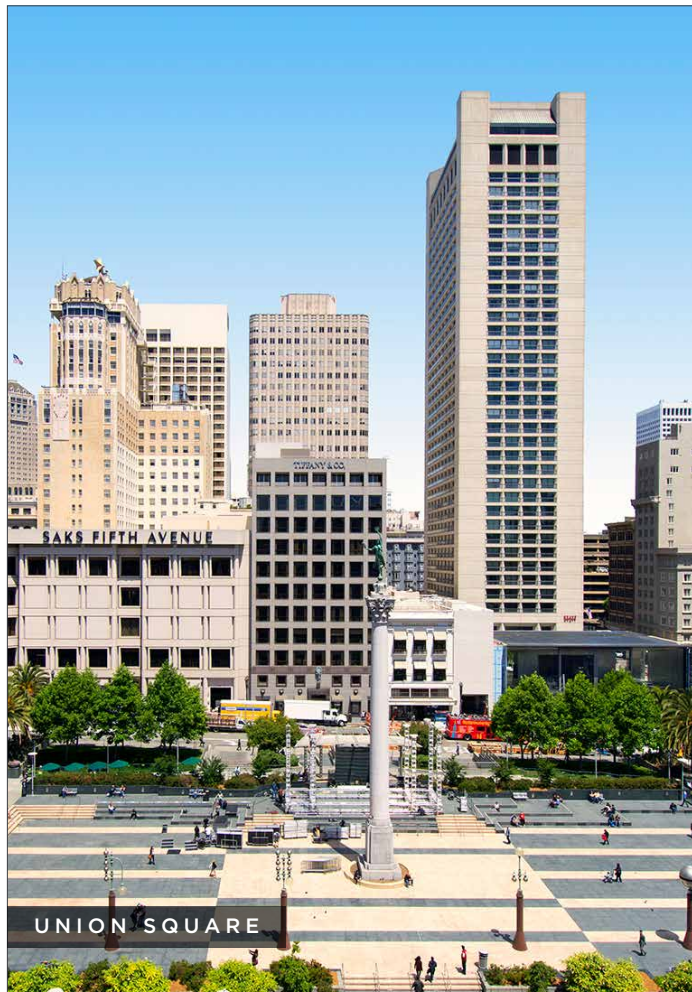
SFJAZZ



CPMC HOSPITAL VAN NESS CAMPUS



WAR MEMORIAL OPERA HOUSE



UNION SQUARE



THE WESTIN ST. FRANCIS



# 1000 Larkin

SAN FRANCISCO | CA

**CATHERINE MEUNIER**

office 415.806.5566

[catherine@mavenproperties.com](mailto:catherine@mavenproperties.com)

DRE #01843732

**JOAN RUYLE**

office 415.404.7313

[joan@mavenproperties.com](mailto:joan@mavenproperties.com)

DRE #2006025

**SANTINO DEROSE**

office 415.404.7337

[sd@mavenproperties.com](mailto:sd@mavenproperties.com)

DRE #01338326

**maven**  
RETAIL

NOTICE: This information has been secured from sources we believe to be reliable but we make no representations, warranties, express or implied, as to the accuracy of the information. Listing broker has been given enough information to provide only a preliminary interest in the property. The materials are not to be considered fact. The information contained herein is not a substitute for thorough due diligence investigation. References to square footage, zoning, use, or age are approximate. Please contact the San Francisco Planning Department to verify zoning at (415) 558-6378, as neither broker or landlord represent that this space is suitable for your use. Tenant or Buyer must verify the information at their own expense and bears all the risk for any inaccuracies. By receiving these materials you are agreeing to the disclaimers set forth herein. DRE#01878802