

2124 Fillmore

SAN FRANCISCO | CALIFORNIA

PACIFIC HEIGHTS RETAIL OPPORTUNITY

2124

EQUIPMENT

joie

maven
RETAIL

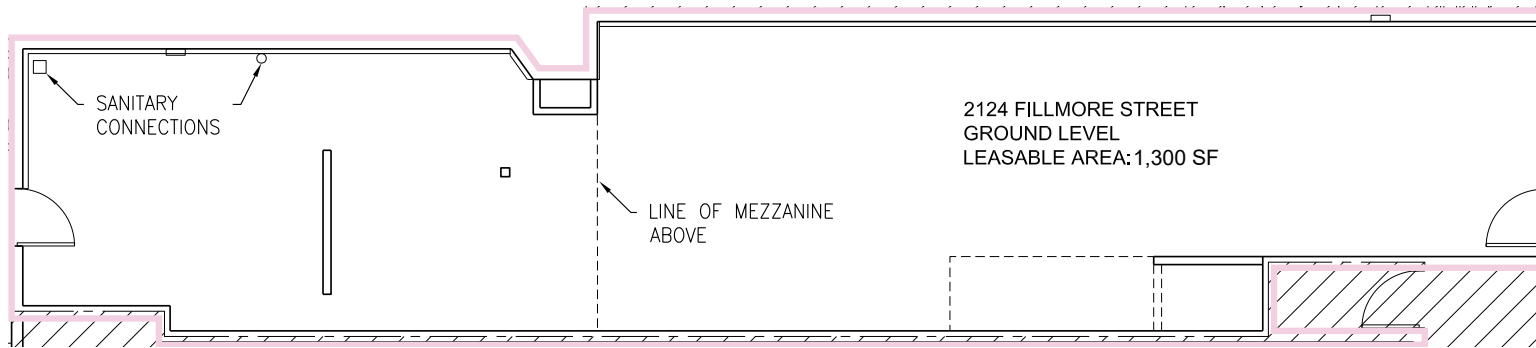
2124 Fillmore

SAN FRANCISCO | CALIFORNIA



2124 Fillmore

SAN FRANCISCO | CALIFORNIA



FEATURES

- 1,257 SF on ground + 437 SF storage rear of the Premises
- Turnkey space
- Interactive Virtual Mirror
- Modern finishes
- Most desirable block of Fillmore

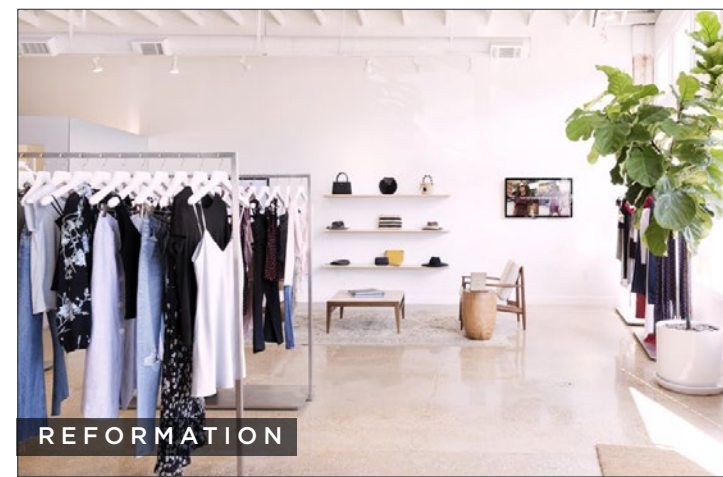




RAG & BONE



ROTHY'S



REFORMATION

PACIFIC HEIGHTS NEIGHBORHOOD



VERONICA BEARD



SALT & STRAW

Upper Fillmore Street is one of San Francisco's most prestigious shopping districts. The roughly six-block stretch of upscale retail shops is the main shopping district for the extravagant Pacific Heights neighborhood. Brands like, Reformation, Veronica Beard, Jonathan Adler, Credo, Byredo, Blue Bottle, Gorjana, and Rag & Bone are just some of the hot shops dotting the district. Upper Fillmore is also home to some of San Francisco's best restaurants such as SPQR, Woodhouse Fish Co., and Noosh.



PIZZERIA DELFINA



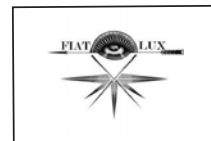
BLUE BOTTLE



JONATHAN ADLER

2124 Fillmore

SAN FRANCISCO | CALIFORNIA



CLAY STREET

Alice & Olivia/Available 2259
Clay Theater/Available 2261
Veronica Beard 2241
Di Pietro Todd (Hair Salon) 2239
Paige Denim 2237
Ten-Ichi Sushi Restaurant 2235

Cielo (European Designer Ready to Wear) 2225
Intermix 2223
Joe and the Juice 2213
L'Occitane 2207
Salt & Straw 2201
George 2512

2298 Palmer's Tavern
2252 Seconds to Go
2244 Via Veneto Restaurant
2238 Hair Fairies
2238 LE LABO

2226 Athleta
2222 Starbuck's Coffee
2216 Eileen Fisher
2210 Café La Mediterranee
2208 Illesteva/Available
2200 D&M Liquors

FILLMORE STREET

SACRAMENTO STREET

Peet's Coffee 2197
Browser Books 2195
Mudpie 2185
Jonathan Adler 2133
Troya 2125
Jane 2123
Goop/Available 2121
Ruti 2119
BeneFit Cosmetics 2117
Gallery of Jewels (Local Jeweler) 2115
Papyrus/Available 2109
Atelier Cologne/ Available 2105
Delfina 2101
Santino's Vino 2101

2142 Frame Denim
2138 Credo
2132 Bite Lip Lab/Available
2130 Velvet

2124 Re-set/Available
2122 Equipment
2116 Joie

2114 Fresca (Peruvian Restaurant)
2100 Wells Fargo Bank

CALIFORNIA STREET

Taco Bar 2053
Available 2049
Aquatalia 2047
Apizza 2043
Mio Women's Apparel 2035
ModCloth/ Available 2033
Scotch & Soda 2031
Koio 2029
Walter Adams (Custom Framing) 2019
Teresa Lam Optometry 2017
Bun Mee 2015
Aday/Available 2011
Noosh 2001

2060 Rag & Bone
2056 Gorjana
2050 NARS
2044 International Orange Spa/Yoga Lounge/Available

2040 New tenant coming
2028 James Perse/Available
2020 Harry's Bar
2016 The Grove (Cafe)
2000 Byredo

FILLMORE STREET

PINE STREET

Kiehl's 1971
Paper Source (Custom Paper Stationery Store) 1925
Roam Burger 1923
Minted 1919
Florio (Brasserie) 1915
Saje 1913
SPQR (Restaurant) 1911
Perfect Cleaners 1909
Invision Optometry 1907
45rpm 1905
Ministry of Supply/Available 1903
Crossroads 1901

1946 The Glaze
1942 Rose Gold-Fiat Lux
1932 The Shade Store
1930 Cotelac/Available
1928 PrAna/Available
1914 WoodHouse Restaurant
1910 Compton's Coffee House
1908 Drybar
1906 Plants and Friends
1904 HiHo Silver
1902A Zuri
1902 Susan Howell Gallery
1902B Beads & Shells Gift Store
1900 Sterling Bank

BUSH STREET



2124 Fillmore

SAN FRANCISCO | CALIFORNIA

maven
RETAIL

PAM MENDELSON
office 415.404.6650
pam@mavenproperties.com
DRE #00953050

SARAH BRETT SCHWARTZ
office 415.404.6959
sarah@mavenproperties.com
DRE #01903152

ARIANE GIRARD
office 415.936.6806
ariane@mavenproperties.com
DRE #02057293

NOTICE: This information has been secured from sources we believe to be reliable but we make no representations, warranties, express or implied, as to the accuracy of the information. Listing broker has been given enough information to provide only a preliminary interest in the property. The materials are not to be considered fact. The information contained herein is not a substitute for thorough due diligence investigation. References to square footage, zoning, use, or age are approximate. Please contact the San Francisco Planning Department to verify zoning at (415) 558-6378, as neither broker or landlord represent that this space is suitable for your use. Tenant or Buyer must verify the information at their own expense and bears all the risk for any inaccuracies. By receiving these materials you are agreeing to the disclaimers set forth herein. DRE#01878802