

Mid Market
998 MARKET STREET
RESTAURANT OPPORTUNITY | SAN FRANCISCO, CA



maven
RETAIL

1,950 RSF FULL KITCHEN WITH TYPE I HOOD

RESTAURANT OPPORTUNITY



- **+/- 1,950 RSF**
- **Full kitchen with Type I Hood**
- **No key money**
- **Potential for rooftop event space**
- **Additional lower level space available**
- **Outdoor seating potential**
- **Adjacent to the Warfield and Golden Gate Theaters**
- **Recent development with modern finishes**
- **Nearby neighbors include Proper Hotel, Supreme, IKEA, David Rio, Westfield Mall, and more.**

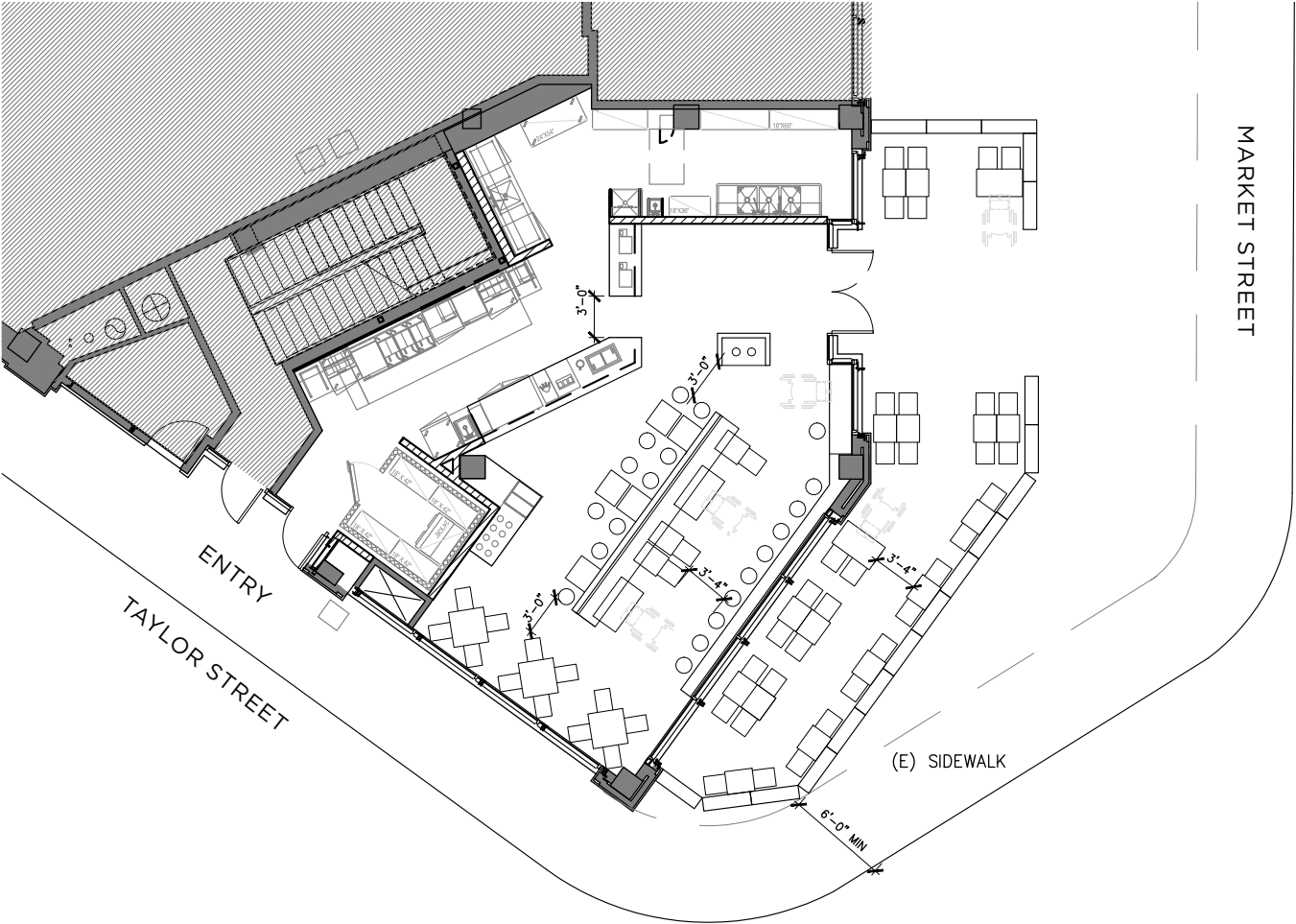
FEATURES

998 Market is conveniently located in the heart of San Francisco's Mid-market corridor, adjacent to both the Golden Gate and Warfield Theaters, and sandwiched in between the new Whole Foods and IKEA projects. This corner restaurant space features floor-to-ceiling storefront windows, a full kitchen, and modern finishes. Nearby neighbors include David Rio Chai Bar, Supreme, Fellow Barber, Bait Shoes, Westfield, Proper Hotel, and more. Easy public transportation with BART and MUNI nearby.



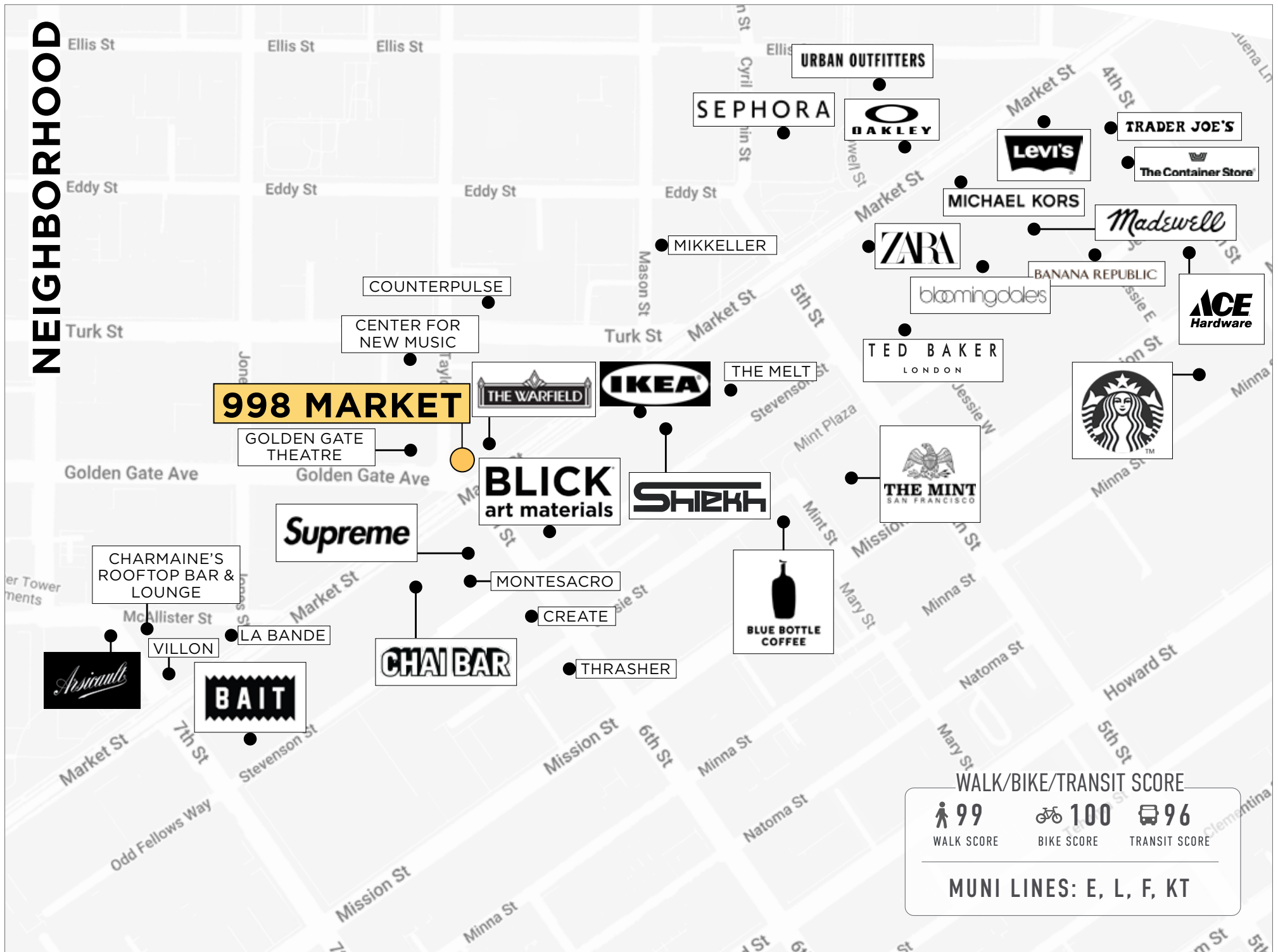
998 MARKET

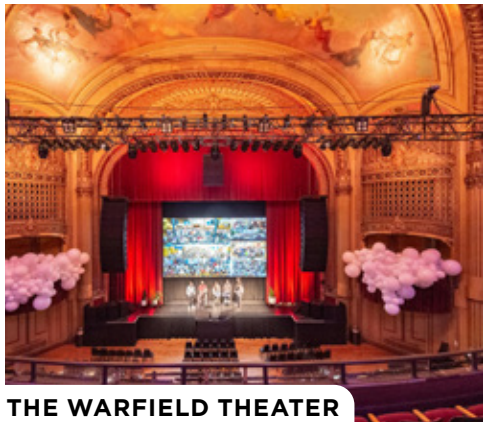
FLOOR PLAN





NEIGHBORHOOD





THE WARFIELD THEATER



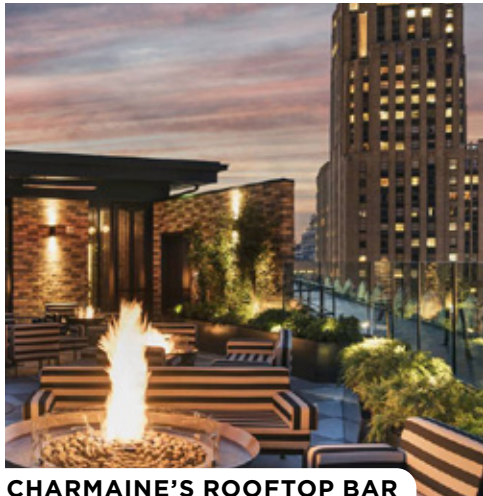
ARSICAULT BAKERY



VILLON



GOLDEN GATE THEATER



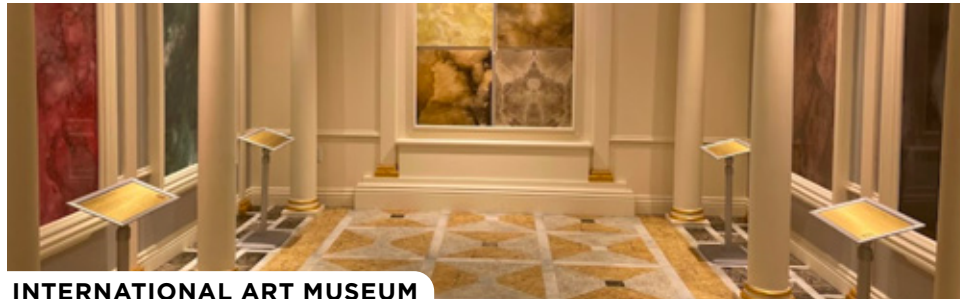
CHARMAINE'S ROOFTOP BAR



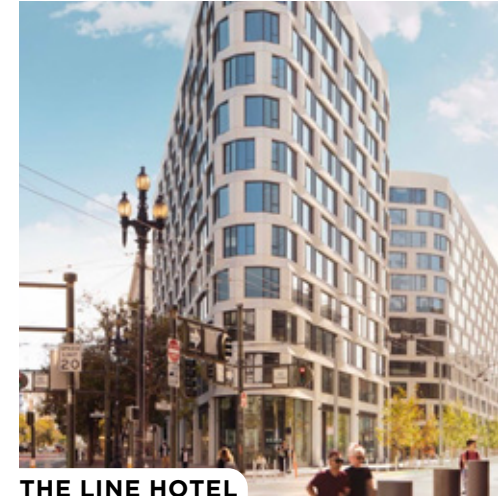
SUPREME



DAVID RIO CHAI BAR



INTERNATIONAL ART MUSEUM



THE LINE HOTEL

MID-MARKET

Located at a 5-minute walk from the Cable Car Turn-Around and the Powell Street BART (Bay Area Rapid Transit) station on Market Street. A 10-minute walk to the Central Subway, which will ultimately pass through Chinatown, Moscone, and Mission Bay.

Only 1 block from Westfield San Francisco Center, home to over 170 shops, and a 10-minute walk to the luxury hotels and shops of Union Square. Positioned adjacent to the Warfield and Golden Gate Theatres, and down the street from the Orpheum Theatres, with nearly 7,000 combined seats. The Warfield theatre alone holds more than 150 concerts each year. Within walking distance of many of San Francisco's finest and newest hotels, as well as existing and upcoming residential projects.



Contact

HALEY KLEIN

Office 415.404.7330

haley@mavenproperties.com

DRE #1907308

SANTINO DEROSE

Office 415.404.7337

sd@mavenproperties.com

DRE #01338326

NOTICE: This information has been secured from sources we believe to be reliable but we make no representations, warranties, express or implied, as to the accuracy of the information. Listing broker has been given enough information to provide only a preliminary interest in the property. The materials are not to be considered fact. The information contained herein is not a substitute for thorough due diligence investigation. References to square footage, zoning, use, or age are approximate. Please contact the San Francisco Planning Department to verify zoning at (415) 558-6378, as neither broker or landlord represent that this space is suitable for your use. Tenant or Buyer must verify the information at their own expense and bears all the risk for any inaccuracies. By receiving these materials you are agreeing to the disclaimers set forth herein. DRE#01878802

466 Green Street Suite #203

San Francisco, CA 94133

415-781-770

www.mavenproperties.com