

5821 GEARY

SAN FRANCISCO | CALIFORNIA



SINGLE TENANT 2ND GENERATION RESTAURANT SPACE

maven
RETAIL

5821
GEARY



Located in the Outer Richmond, this well known location was a top 100 restaurant for many years. The restaurant sits near other acclaimed restaurants like Aziza and Dragon Beaux. This multi-level restaurant offers a dining room and kitchen on the ground level. The second floor is open for large banquets or private parties. Kitchen infrastructure is currently in place along with an existing elevator that operates between the two levels.

HIGHLIGHTS

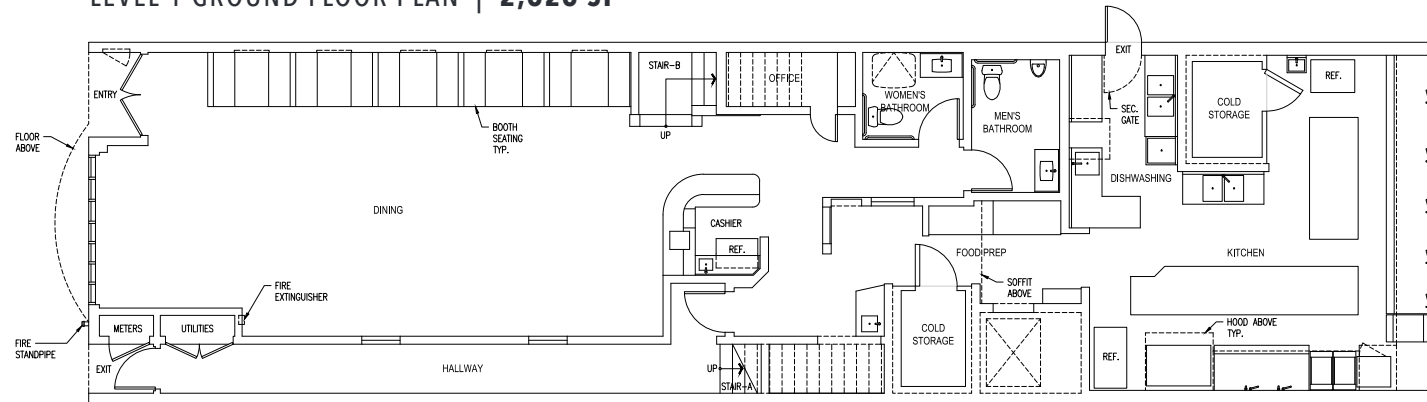
- 5,470 SF
- Large 2nd generation restaurant
- Skylights
- Big front windows on the first and 2nd floor
- Existing infrastructure in place
- Parking is easy and the site is located right off the 38 bus line



5821 GEARY

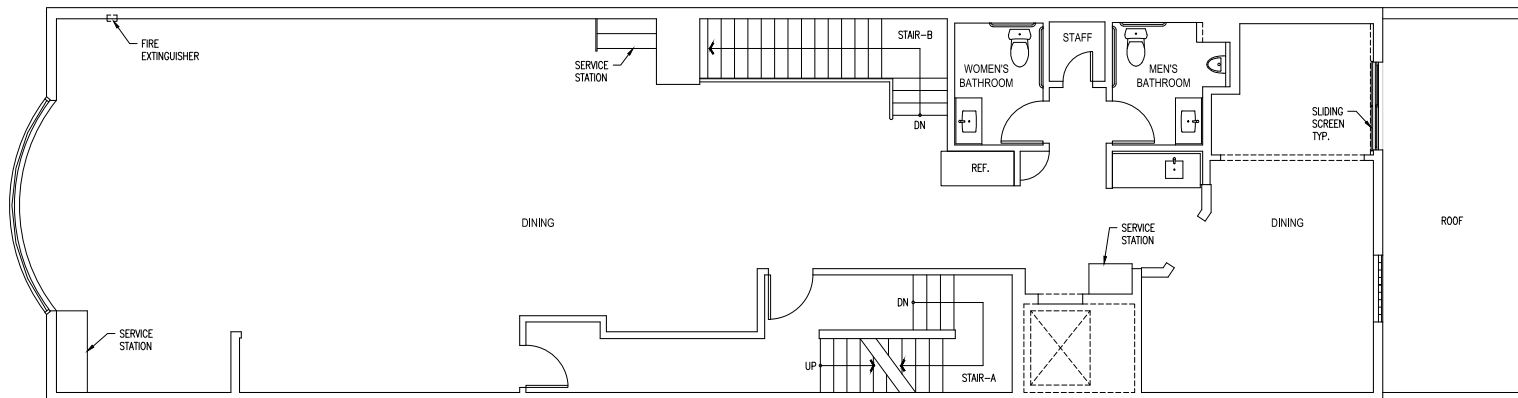
FLOOR PLANS

LEVEL 1 GROUND FLOOR PLAN | 2,626 SF

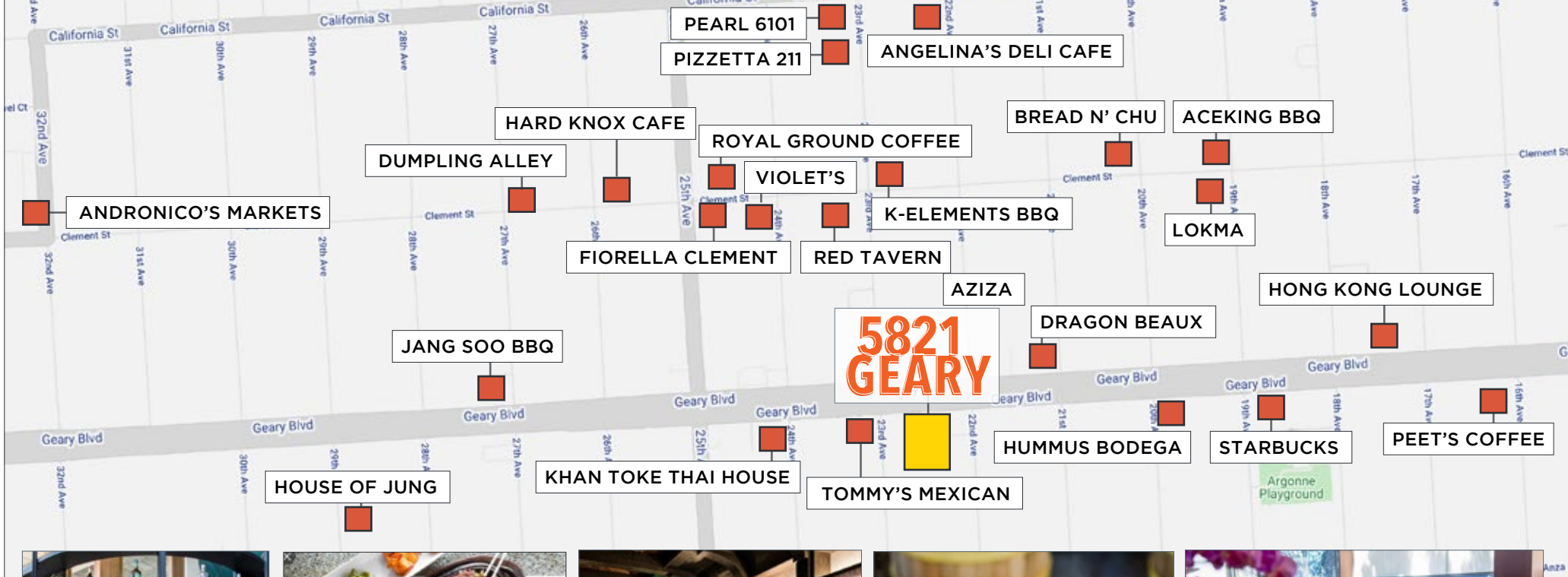


GEARY BLVD

LEVEL 2 FLOOR PLAN | 2,231 SF



GEARY BLVD



5821 GEARY

CATHERINE MEUNIER

office 415.806.5566

catherine@mavenproperties.com

DRE #01843732

maven
RETAIL

NOTICE: This information has been secured from sources we believe to be reliable but we make no representations, warranties, express or implied, as to the accuracy of the information. Listing broker has been given enough information to provide only a preliminary interest in the property. The materials are not to be considered fact. The information contained herein is not a substitute for thorough due diligence investigation. References to square footage, zoning, use, or age are approximate. Please contact the San Francisco Planning Department to verify zoning at (415) 558-6378, as neither broker or landlord represent that this space is suitable for your use. Tenant or Buyer must verify the information at their own expense and bears all the risk for any inaccuracies. By receiving these materials you are agreeing to the disclaimers set forth herein. DRE#01878802