



RESTAURANT/BAR

4063 18TH STREET

maven
RETAIL



2,571 SF on two levels

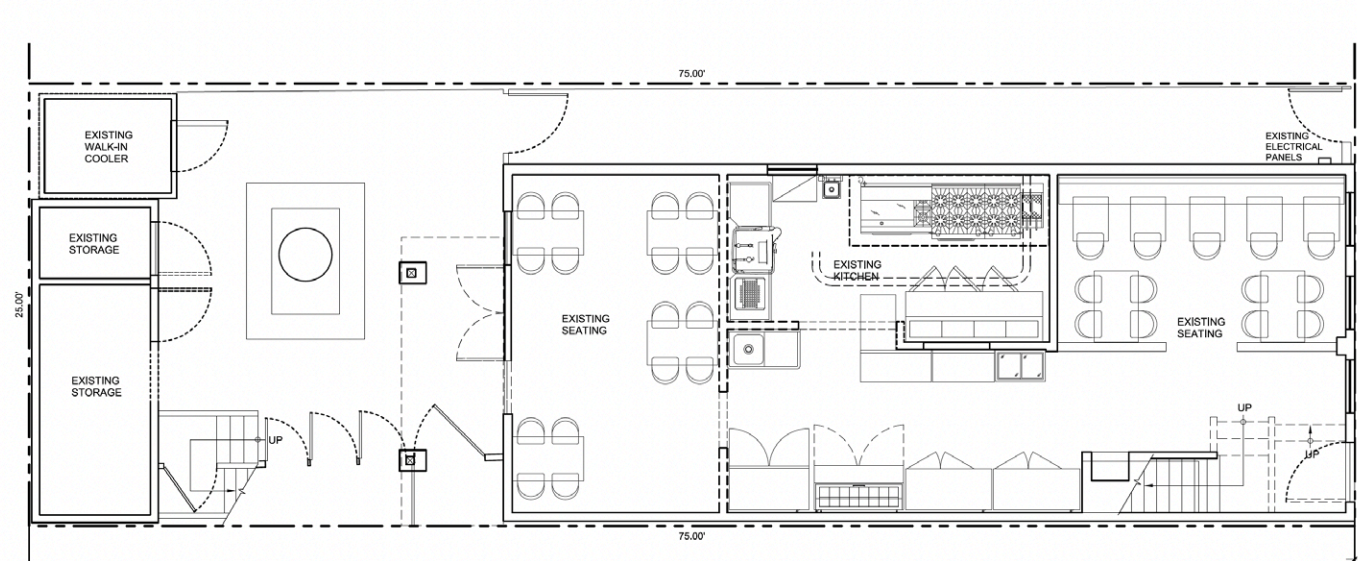
FEATURES

- Potential for a change of use
- Vintage San Francisco architecture
- Period details throughout
- Potential for outdoor patio seating
- High ceilings
- 2 levels
- Kitchen infrastructure in place
- Full building branding opportunity
- High foot traffic
- Nearby restaurants and retailers include Anchor Oyster Bar, Fable, Poesia, Lark, Starbucks, Bottle Bacchanal, Harvey's, The Sausage Factory, Walgreens, and many more

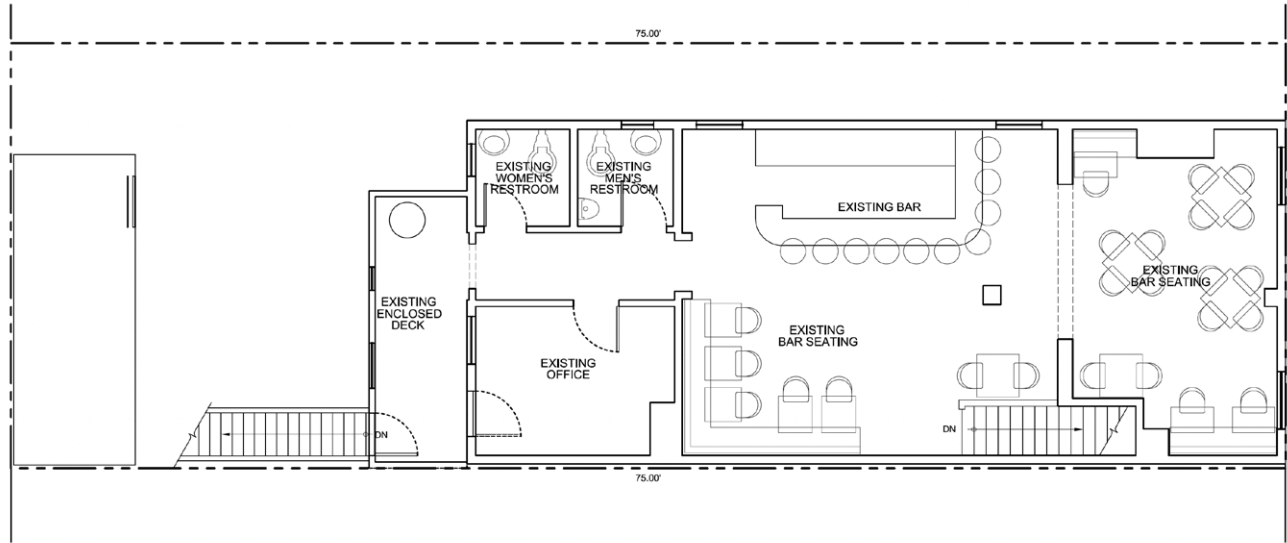


FLOOR PLAN

GROUND FLOOR



SECOND FLOOR



CASTRO

BUENA VISTA PARK

CORONA HEIGHTS PARK

RANDALL MUSEUM

CASTRO ST

NOE ST

SANCHEZ ST

CHURCH ST

DOLORES ST

17TH ST

18TH ST

19TH ST

20TH ST

19TH ST

18TH ST

20TH ST

SOULCYCLE

HOT COOKIE

CASTRO THEATRE

CAFE MYSTIQUE



lark

4063
18TH STREET

MOLLIE STONE'S

Fable

THE SAUSAGE FACTORY

ANCHOR OYSTER BAR

LE MARAIS BAKERY

BR-RITE CREAMERY

GOOD GOOD CULTURE CLUB

TARTINE MANUFACTORY

DOLORES PARK

Walk/Bike/Transit Score



99

WALK SCORE



78

BIKE SCORE



85

TRANSIT SCORE

BUS LINES: 22, 24, 33, 35, 37

Lardous

SF WOODEN SPOON

BLACK PAPER BREWING COMPANY

IDETOUR



BLACK BIRD

VERVE

MILLAY ACE Hardware

SANCHI SUSHI

THOROUGH BREAD & PASTRY

15TH ST WARAKUBUNE SUSHI

i'a poke

copas

BARRY'S

Peet's Coffee

STARBELLY

DINOSAURS

SUPER DUPER

FITNESS SF

KHEN EPSTEIN PARKER

ZONA ROSA

ROLO

FRANCES

SAUCY ASIAN

SPRO

CoffeeLab

17TH ST

SOULCYCLE

HOT COOKIE

CASTRO THEATRE

CAFE MYSTIQUE



lark

4063
18TH STREET

MOLLIE STONE'S

Fable

THE SAUSAGE FACTORY

ANCHOR OYSTER BAR

LE MARAIS BAKERY

BR-RITE CREAMERY

GOOD GOOD CULTURE CLUB

TARTINE MANUFACTORY

DOLORES PARK

Walk/Bike/Transit Score



99

WALK SCORE



78

BIKE SCORE



85

TRANSIT SCORE

BUS LINES: 22, 24, 33, 35, 37



PHILZ COFFEE



SOULCYCLE



ANCHOR OYSTER BAR



FABLE



COPPER BAR



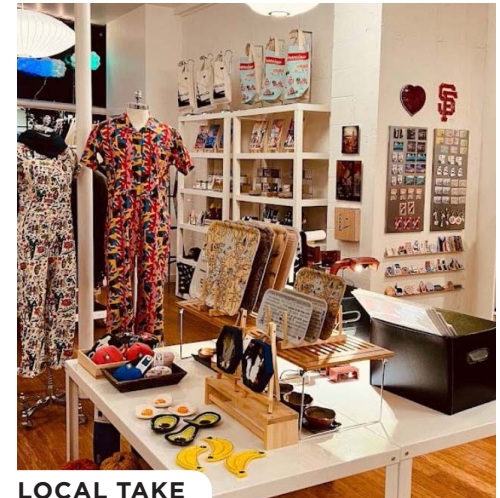
STARBELLY



CASTRO THEATER



LARK



LOCAL TAKE

CASTRO

4063 18th Street is located in the heart of the Castro neighborhoods, epitomizes by a vibrant and historic LGBTQ+ enclave renowned for its rich culture, colorful Victorian houses, and bustling streets.

With a legacy deeply rooted in LGBTQ+ activism, including being the home of Harvey Milk, it symbolizes a hub of diversity, acceptance, and community. This eclectic neighborhood boasts a dynamic nightlife, diverse eateries, and a welcoming atmosphere. While embracing its history and celebrating inclusivity through events and landmarks, Castro also faces ongoing discussions about preserving its unique identity amidst changes and gentrification in the everevolving landscape of San Francisco.



Contact

JOAN RUYLE

office 415.404.7313

joan@mavenproperties.com

DRE #02006025

SANTINO DEROSE

office 415.404.7337

sd@mavenproperties.com

DRE #01338326

NOTICE: This information has been secured from sources we believe to be reliable but we make no representations, warranties, express or implied, as to the accuracy of the information. Listing broker has been given enough information to provide only a preliminary interest in the property. The materials are not to be considered fact. The information contained herein is not a substitute for thorough due diligence investigation. References to square footage, zoning, use, or age are approximate. Please contact the San Francisco Planning Department to verify zoning at (415) 558-6378, as neither broker or landlord represent that this space is suitable for your use. Tenant or Buyer must verify the information at their own expense and bears all the risk for any inaccuracies. By receiving these materials you are agreeing to the disclaimers set forth herein. DRE#01878802

maven
RETAIL

466 Green Street Suite #203

San Francisco, CA 94133

415-781-770

www.mavenproperties.com