



1508 WALNUT STREET

BERKELEY | CALIFORNIA

SECOND GENERATION
NORTH BERKELEY
RESTAURANT WITH
TYPE 47 & EATING AREA

*Crown Fortune
Properties, Inc.*

maven
RETAIL

1508
WALNUT
STREET

FEATURES

Charming restaurant situated in North Berkeley's Gourmet Ghetto, close to Cheeseboard, Ches Panisse, Gregoire, and more. Prospective lessee shall have the use of a Type 47 license and two outdoor eating areas. The space features a full kitchen with spacious prep area, large dining area, bar, and high ceilings. Nearby neighbors include the original Peet's Coffee, Walk Shop, Cheeseboard, Chez Panisse, Healthy Spot, and more. Excellent opportunity, first time on the open market in years.

- +/- 2,766 SF
- 2 outdoor eating areas
- Full bar with use of a Type 47 ABC License
- High ceilings
- Full kitchen with Type I hood
- FF&E in place
- Close proximity to UC Berkeley and public transportation

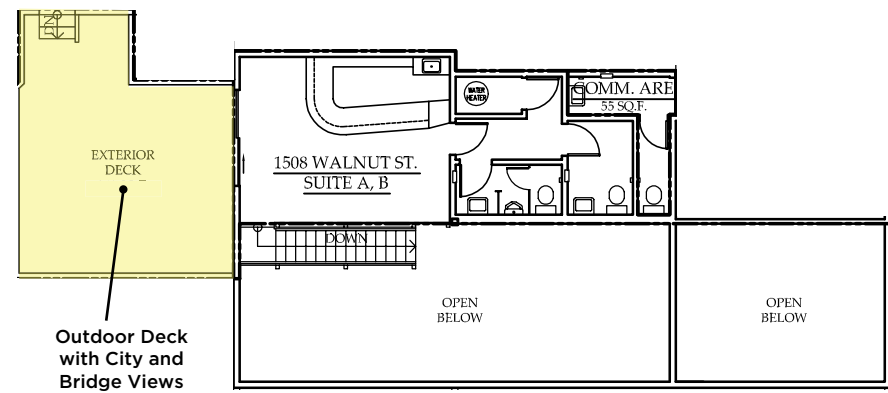


maven
RETAIL

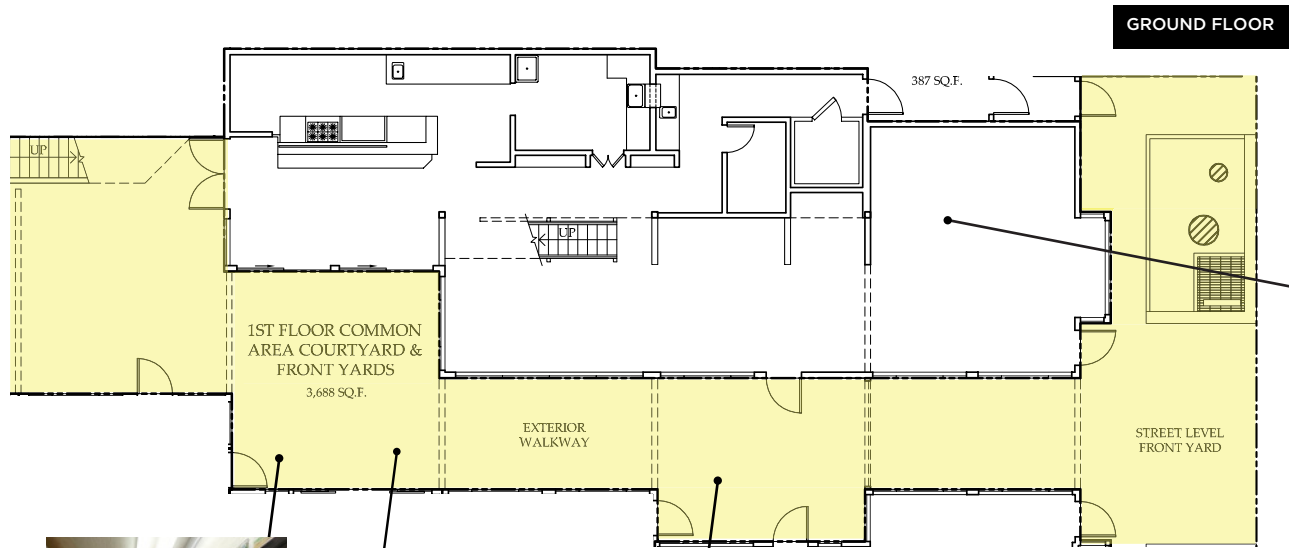
1508
WALNUT
STREET

NORTH
BERKELEY

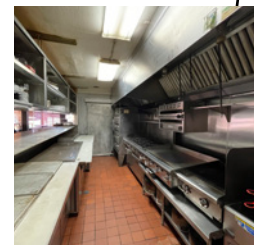
FLOOR PLANS



SECOND LEVEL



GROUND FLOOR



Additional
Outdoor
Seating Area





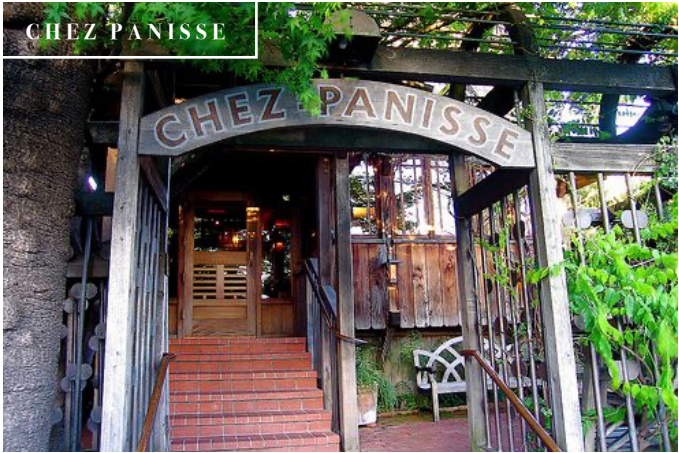
1508
WALNUT
STREET



maven
RETAIL

1508
WALNUT
STREET

NORTH
BERKELEY



NEIGHBORHOOD



1508 WALNUT STREET

SANTINO DEROSE

415.404.7337

sd@mavenproperties.com

DRE #01338326

FRITZ JACOBS

415.609.6681

fritz@crownfortune.com

DRE #01967918

NOTICE: This information has been secured from sources we believe to be reliable but we make no representations, warranties, express or implied, as to the accuracy of the information. Listing broker has been given enough information to provide only a preliminary interest in the property. The materials are not to be considered fact. The information contained herein is not a substitute for thorough due diligence investigation. References to square footage, zoning, use, or age are approximate. Please contact the San Francisco Planning Department to verify zoning at (415) 558-6378, as neither broker or landlord represent that this space is suitable for your use. Tenant or Buyer must verify the information at their own expense and bears all the risk for any inaccuracies. By receiving these materials you are agreeing to the disclaimers set forth herein. BRE#01878802