

2601 MISSION

SAN FRANCISCO | CALIFORNIA

+/- 7,136 SF AVAILABLE

maven
RETAIL

2601 MISSION

A CENTERED LOCATION

Conveniently located in the heart of the Mission, 2601 Mission occupies the ground floor level of the Bay View Tower. Formally US Bank, this space has a creative layout, high-ceilings, and bank infrastructure in place.

Nearby neighbors include Foreign Cinema, Alamo Draft House, Urban Putt, along with the many local shops and markets that make this neighborhood unique and rich in culture.





- +/- 7,136 SF available on ground floor
- Great foot traffic
- Hard corner location with high visibility
- Unique, open floor plan
- On site gated parking available for additional monthly fee
- Bank vault still in place
- 100 Walk Score
- Near the 16th Street Bart Station and various MUNI Lines
- Many uses considered

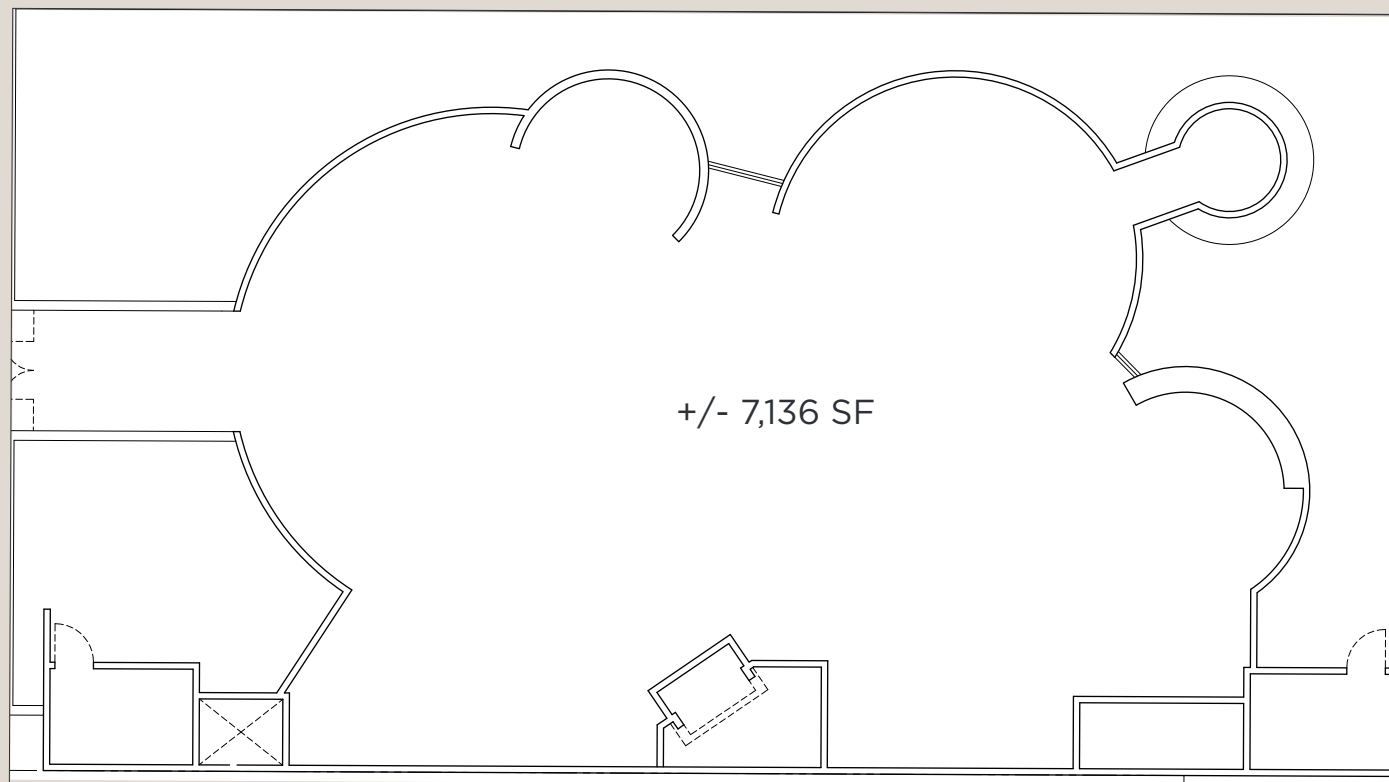
THE EAT TO RES

PLAN FLOOR

22ND STREET

MISSION STREET

ENTRANCE



PARKING LOT



2601 MISSION



LOLINDA

El Techo

LASZLO

foreigncinema

verizon

Walgreens

WELLS FARGO

LIMON
ROTISSERIE

URBAN PUTT

RISE & GRIND

2601 MISSION

T-Mobile

RED POPPY CRYSTAL HOUSE

Beretta

Cafe Valencia
SAN FRANCISCO

CITY COLLEGE
OF SAN FRANCISCO

BANK OF AMERICA

WISE SONS
since 1771

HAUS

24TH STREET STATION

BART

BARZOTTO

ARIMMENI

BELOVED CAFE
COFFEE & TEA

PAPRIKA

Fiore
CAFFE

Philz Coffee
LIKE A CUP AT A TIME

WALK/TRANSIT/BIKE SCORE

Walk Score 100	Transit Score 83	Bike Score 100
--------------------------	----------------------------	--------------------------

YOGA SOCIETY
OF SAN FRANCISCO

FUN HUB THE MISSION

The Mission District is an exuberant, evolving neighborhood with Latino roots and a hipster vibe. Old-school taquerias and eclectic live-music clubs mix with chef-driven eateries and craft cocktail lounges.



FOREIGN CINEMA



LASZLO BAR



LOLINDA

2601MISSION



PAMELA MENDELSON

office 415.404.6650

pam@mavenproperties.com

DRE #00953050

DOMINIC MORBIDELLI

office 415.404.7314

dom@mavenproperties.com

DRE #02024348

maven
RETAIL

NOTICE: This information has been secured from sources we believe to be reliable but we make no representations, warranties, express or implied, as to the accuracy of the information. Listing broker has been given enough information to provide only a preliminary interest in the property. The materials are not to be considered fact. The information contained herein is not a substitute for thorough due diligence investigation. References to square footage, zoning, use, or age are approximate. Please contact the San Francisco Planning Department to verify zoning at (415) 558-6378, as neither broker or landlord represent that this space is suitable for your use. Tenant or Buyer must verify the information at their own expense and bears all the risk for any inaccuracies. By receiving these materials you are agreeing to the disclaimers set forth herein. DRE#01878802