

281  
ELLIS

SAN FRANCISCO, CA

STREET

+/- 2,325 SF + 2,100 SF LOWER LEVEL

PLUG + PLAY



maven  
OFFICE



## FEATURES

- Recent Renovation
- +/- 2,350 SF plus 2,100 SF of Optional Lower Level Space
- Open Creative Workspace + Conference Room + Kitchen + Perimeter Rooms
- Excellent Signage Opportunity
- 2 Blocks from Powell Street BART Station
- Near Market Street & Union Square
- Please Check Zoning for Allowable Uses
- Equipped with Security Cameras and Flood Lights





28I  
ELLIS  
SAN FRANCISCO, CA

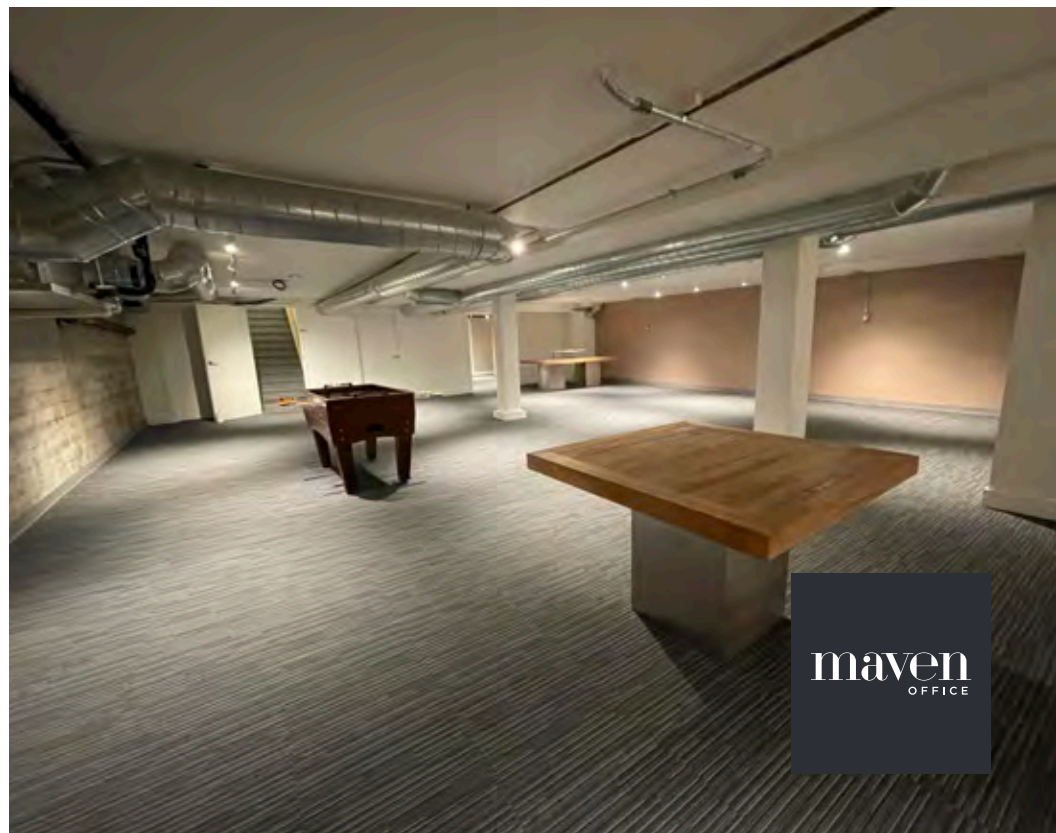
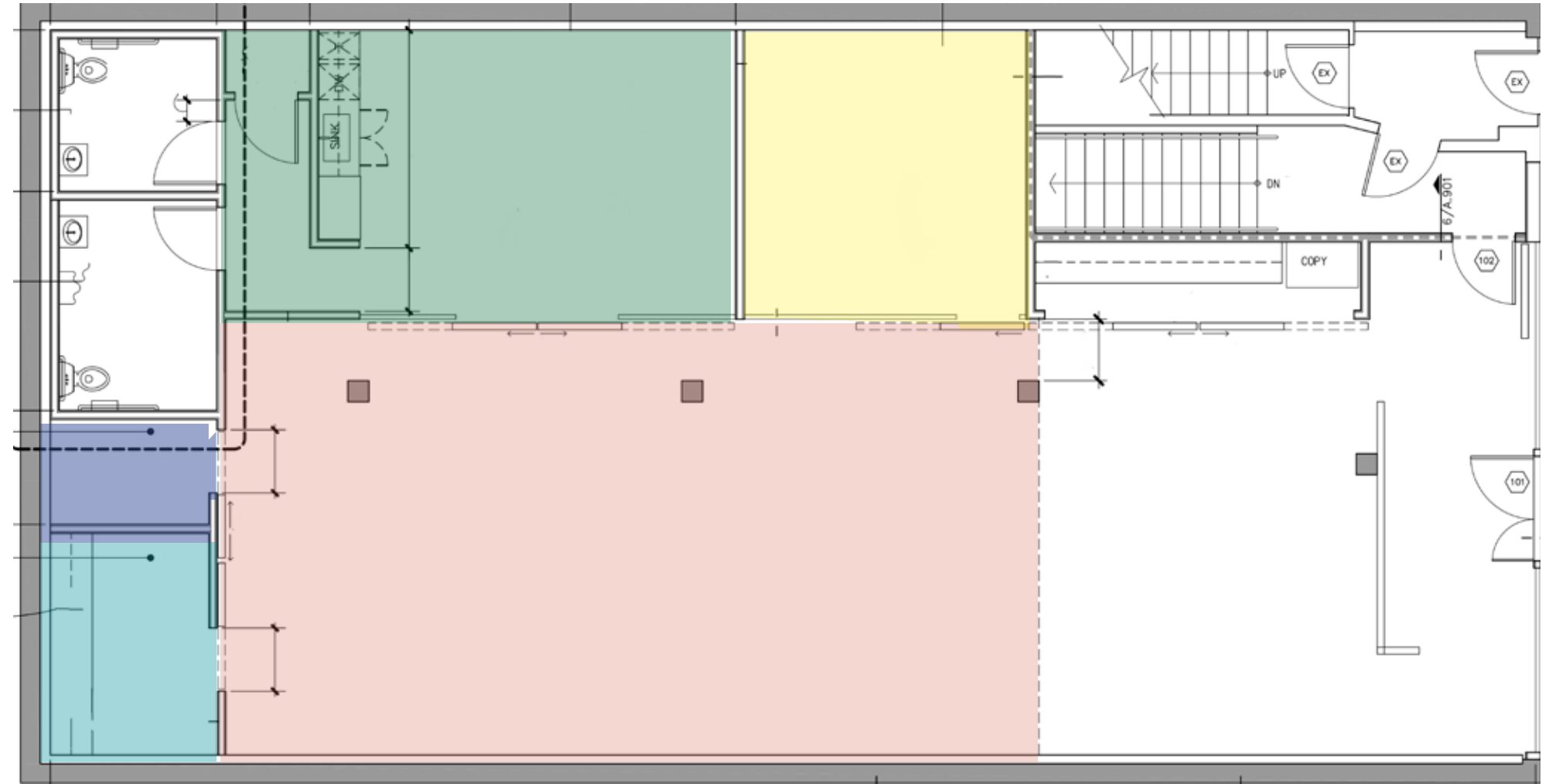
STREET

OPTIONAL BASEMENT



28I  
ELLIS  
SAN FRANCISCO, CA

STREET



maven  
OFFICE

maven  
OFFICE



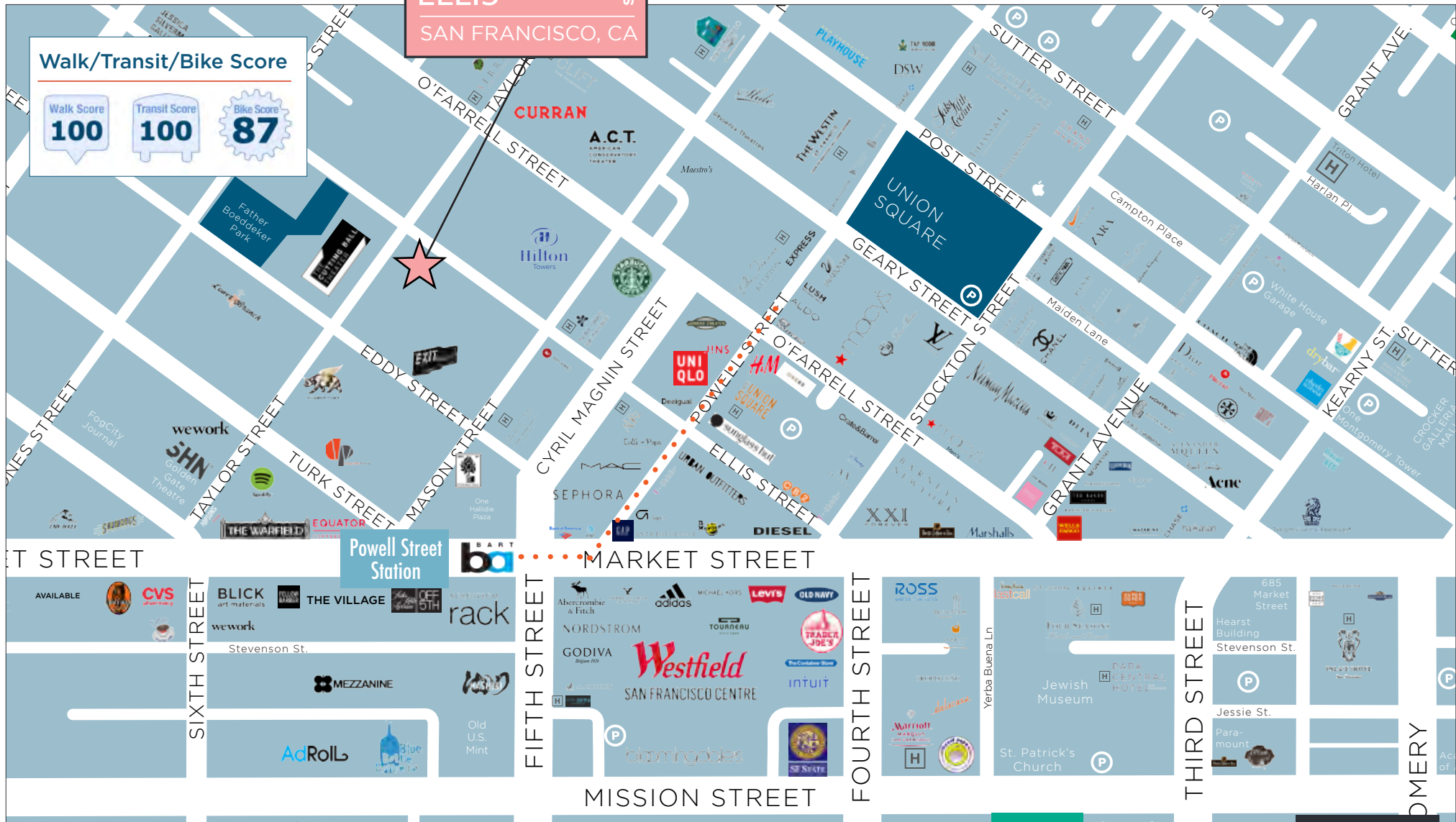
281  
ELLIS  
SAN FRANCISCO, CA  
STREET

Walk/Transit/Bike Score

Walk Score  
100

Transit Score  
100

Bike Score  
87



maven  
OFFICE

281  
ELLIS  
SAN FRANCISCO, CA  
STREET



SCULLERY



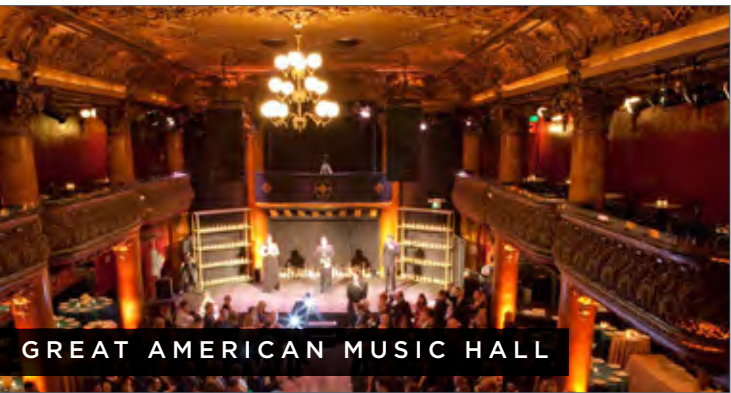
BARNZU



GOLDEN GATE THEATRE



WARFIELD THEATRE



GREAT AMERICAN MUSIC HALL



MENSHO TOKYO



REDFORD





281  
ELLIS

SAN FRANCISCO, CA

STREET

maven  
OFFICE

**DOMINIC MORBIDELLI**

415.404.7314

[dom@mavenproperties.com](mailto:dom@mavenproperties.com)

BRE #02024348

**SANTINO DEROSE**

415.404.7337

[sd@mavenproperties.com](mailto:sd@mavenproperties.com)

BRE #01338326

NOTICE: This information has been secured from sources we believe to be reliable but we make no representations, warranties, express or implied, as to the accuracy of the information. Listing broker has been given enough information to provide only a preliminary interest in the property. The materials are not to be considered fact. The information contained herein is not a substitute for thorough due diligence investigation. References to square footage, zoning, use, or age are approximate. Please contact the San Francisco Planning Department to verify zoning at (415) 558-6378, as neither broker or landlord represent that this space is suitable for your use. Tenant or Buyer must verify the information at their own expense and bears all the risk for any inaccuracies. By receiving these materials you are agreeing to the disclaimers set forth herein. BRE#01878802

466 Green Street Suite #203 | San Francisco, CA 94133 | 415.781.7700