

1869 UNION

San Francisco | CA

RETAIL AVAILABLE



1,404 SF

COW HOLLOW NEIGHBORHOOD

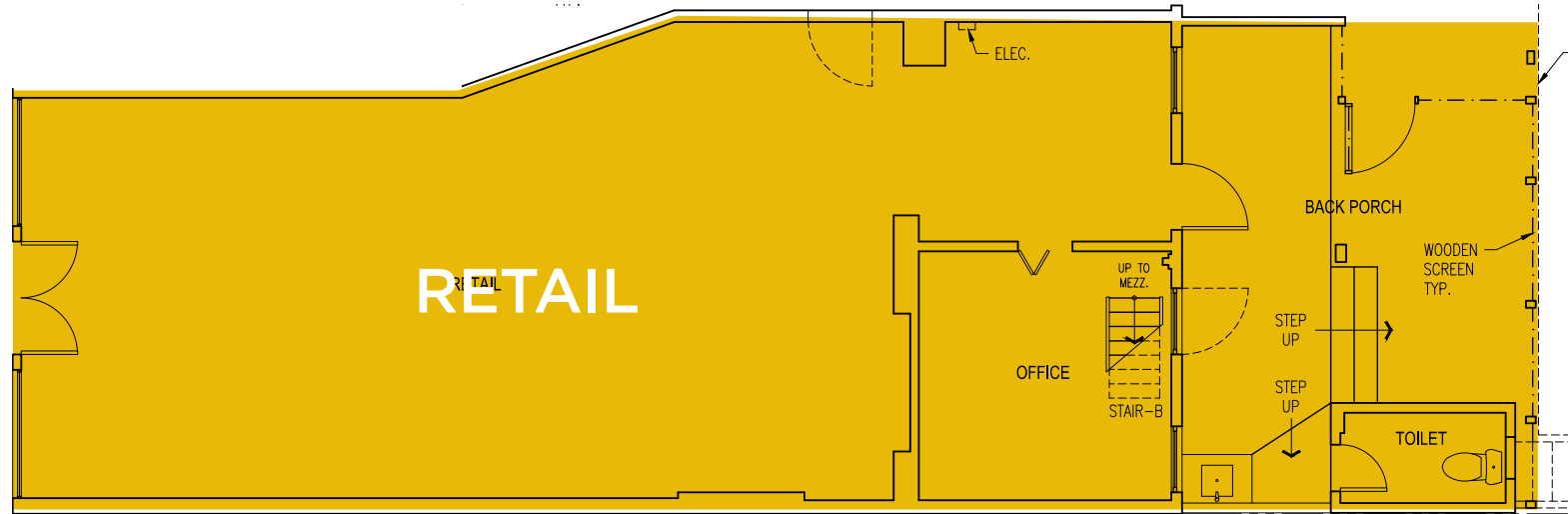
..... Features

- +/- 1,404 SF
- Expansive display windows
- High ceilings
- Hardwood floor
- Close to public transportation
- Cow Hollow neighborhood. Nearby neighbors include Starbucks, Sunglass Hut, Roam Burgers, Lululemon and more

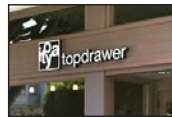




Floor Plan



Cow Hollow Neighborhood



GOUGH STREET		
Chron Medica	1704	
Available	1714	Public Park New Tenant Coming
Union French Cleaners	1718	Crunch Fitness
Available	1728	Cryo SF
Current Clothing	1738	T.C. Jewelers
		Zeymo
Floral Design Studio	1750	VN Nail Care
		Cow Hollow Shoe Repair
Strip Wax Bar	1764	Partners in Crime
Cassidy Real Estate	1770	Salon Macias
Pink Bunny Lingerie	1772	Marina Dental Care
Chic Nail Salon	1772	ML Hair Studio
Space Available	1772	
Dantone	1782	The Lotus Method
		Roam Burgers
Available	1796	Available
		Veo Optics/Space Available
OCTAVIA STREET		
Getzwell Pediatrics	1800	Fenzi Men's Apparel B&A
SF Color Collective	1808	Estate Jewelry
Bare Waxing Boutique	1810	
Available	1816	Capannina Restaurant
Tonal	1824	Available
		One Medical
Sprout	1828	Skin Medical Spa
Caffe Union	1830	Winnie Couture
Union Nail Spa	1832	
Kaiyo	1838	Carats and Stone
Topdrawer	1840	Invisalign
Morning Lavender	1846	Available
Ambiance	1858	Tamashisoul Sushi
Kroylan	1864	Leased
Available	1870	Available
UNTUCKit	1872	Jest Jewels/ Available
Drip Doctor	1877	
Lazer Away	1878	Available
Perfect Fit Personal Training	1888	Drip Doctor
Space Available	1888	Sunglass Hut
Yoga Flow	1892	Starbucks Expansion
Available	1898	Starbucks
LAGUNA STREET		
Wells Fargo	1900	Bus Stop (Bar)
Karma Yoga	1906	
Parking Garage		The Epicurean Trader
Birdies	1934	Italian Homemade Company
		Union Street Jewelry
Perry's Restaurant	1944	Zen Spa
		Dreamy Angels
		B Brow Lounge
Lashfully	1954	Available
The Caviar Company	1954	Closet 1951
ALLEY		
Bonobos	1964	Urban Remedy
		Golden Lotus
Available	1974	High Society
Bar None	1980	Vegan Picnic
Extreme Pizza	1980	Globo Acai + Tea
Solstice	1980	
Juice Shop	1994	The Blue Light (Restaurant)
Gio Gelati	1998	Lululemon
		Bank of America/ Available
BUCHANAN STREET		





WILDSEED



VOURI



EPICURIAN TRADER



PALM HOUSE



BIRDIES



LULULEMON



UNTUCKIT



SEPHORA



STARBUCKS

1869 UNION
San Francisco | CA



maven
RETAIL

Contacts

.....

DOMINIC MORBIDELLI
office 415.404.7314
dom@mavenproperties.com
DRE #02024348

DANIEL STARR
Vice President
Colton Commercial & Partners, Inc.
cell 415.317.3491
dstarr@coltoncommercialsf.com
DRE #02017899

NOTICE: This information has been secured from sources we believe to be reliable but we make no representations, warranties, express or implied, as to the accuracy of the information. Listing broker has been given enough information to provide only a preliminary interest in the property. The materials are not to be considered fact. The information contained herein is not a substitute for thorough due diligence investigation. References to square footage, zoning, use, or age are approximate. Please contact the San Francisco Planning Department to verify zoning at (415) 558-6378, as neither broker or landlord represent that this space is suitable for your use. Tenant or Buyer must verify the information at their own expense and bears all the risk for any inaccuracies. By receiving these materials you are agreeing to the disclaimers set forth herein. DRE#01878802

466 Green Street Suite #203 | San Francisco CA 94133
415-781-7700 | www.mavenproperties.com