



+/- 700 - 1,980 SF

SECOND FLOOR OFFICE

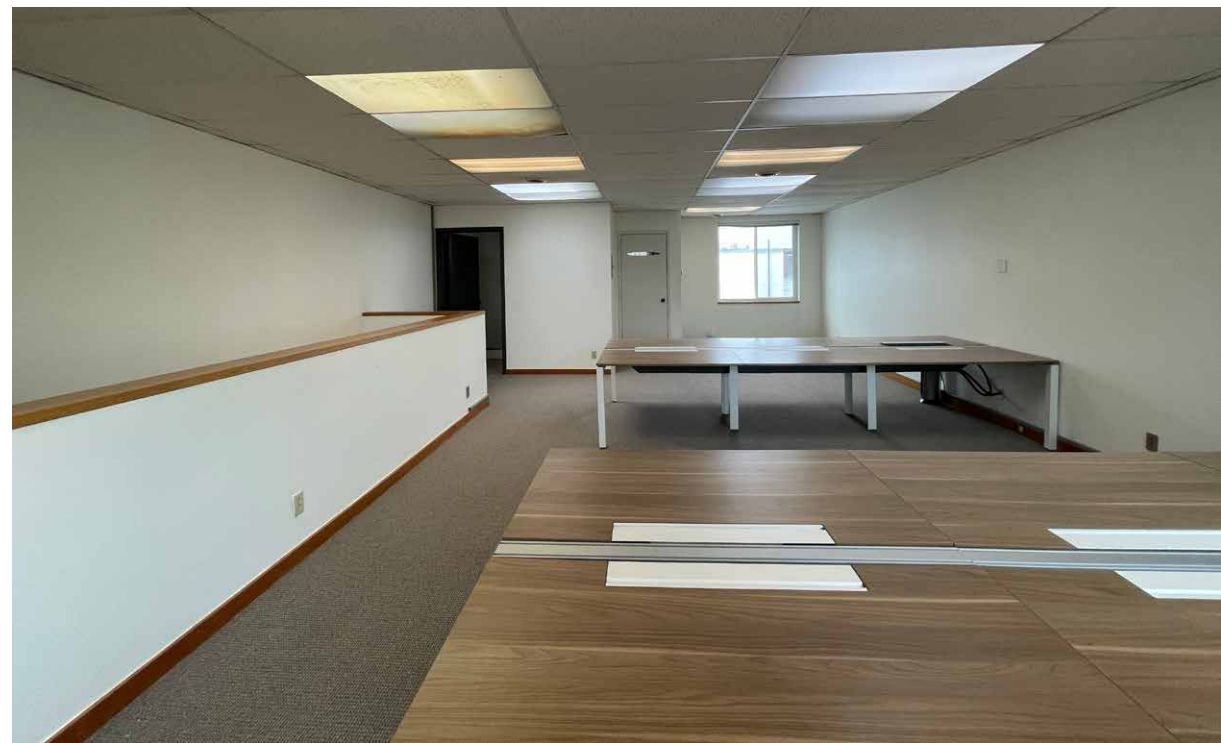
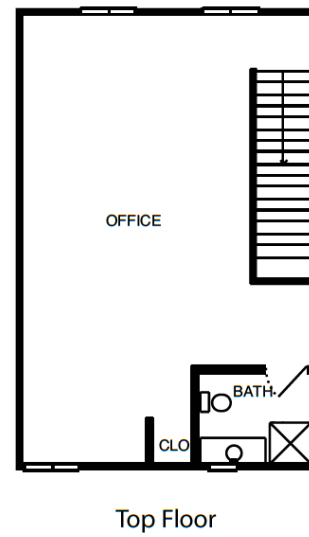
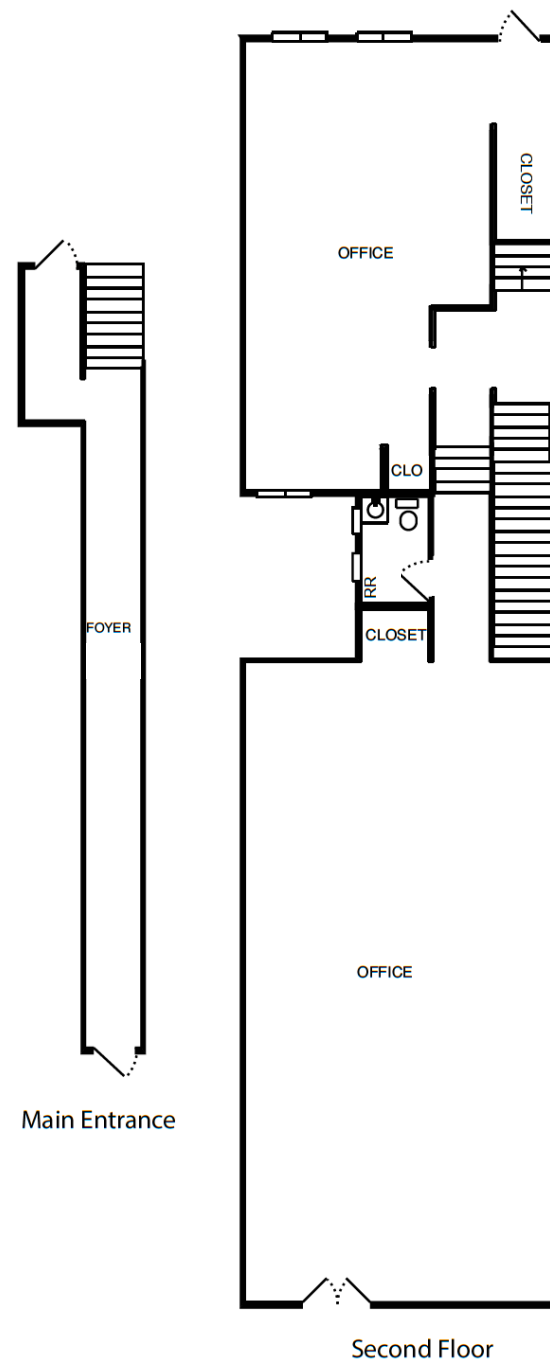
MARINA DISTRICT

Features

Second-floor office in San Francisco's vibrant Marina District. Located between Chestnut and Lombard Street this office features a private entrance, abundant natural light, and multiple bathrooms. With the potential to divide the space as small as +/- 700 SF this office could be suitable for many different uses.

- +/- 700 to 1,980 SF
- Mix of Open Space and Private Rooms
- Multiple Bathrooms (1 shower)
- Great natural light
- Heavy Foot Traffic
- Close to both Union Street and Chestnut Street shops, public transportation, parking, and more.





The Marina

3328 Steiner is located in San Francisco's Marina district, one of the most popular and most upscale neighborhoods in San Francisco. With a variety of trending restaurants and shops, and its proximity to Marin County, the Golden Gate Bridge and public transportation, Chestnut Street lures the locals as well as people from the greater San Francisco Bay Area. The property is also sitting on a fantastic transportation hub, just blocks from the stops of the Apple, Google, eBay, Facebook and Yahoo private bus lines, as well as four different public Muni lines.



APPLE STORE



DELAROSA



BLUE BARN



SUPER DUPER



BLUEMERCURY



LUCCA DELICATESSEN



MARINE LAYER



THE TIPSY PIG



SUSIE CAKES





maven
RETAIL

DOMINIC MORBIDELLI

office 415.404.7314

dom@mavenproperties.com

DRE #02024348

3328 STEINER — FOR LEASE

NOTICE: This information has been secured from sources we believe to be reliable but we make no representations, warranties, express or implied, as to the accuracy of the information. Listing broker has been given enough information to provide only a preliminary interest in the property. The materials are not to be considered fact. The information contained herein is not a substitute for thorough due diligence investigation. References to square footage, zoning, use, or age are approximate. Please contact the San Francisco Planning Department to verify zoning at (415) 558-6378, as neither broker or landlord represent that this space is suitable for your use. Tenant or Buyer must verify the information at their own expense and bears all the risk for any inaccuracies. By receiving these materials you are agreeing to the disclaimers set forth herein. DRE#01878802

466 Green Street Suite #203 | San Francisco, CA 94133 | 415-781-7700 | www.mavenproperties.com