



2041 POLK STREET
SAN FRANCISCO | CA

**SMALL PROFESSIONAL SERVICES
MEDICAL OFFICES ON POLK**
+/- 310-1000 SF

maven
RETAIL

FEATURES

2041 POLK STREET consists of multiple small approximately +/- 310-1000 SF professional services / medical office spaces. Traditionally leased to various medical uses such as dentists, chiropractors, and other small businesses this property is ideal for any business looking to have a presence on one of the busiest corridors of the city, Polk St & Broadway. The property features a private gated entrance from the street that opens up to a garden courtyard and is just steps away from public transit, Café Reveille, Philz Coffee, Blue Barn, Cheese Plus, Bob's Donuts and much more.

- +/- 310-1000 SF
- Mix of Private Offices + Reception Area
- Interior Courtyard Garden
- Gated Entrance on Polk Street
- Close proximity to Public Transit





Russian Hill

Russian Hill is situated in an upscale lively residential community known for the famous crooked Lombard Street, a major tourist destination. Nothing beats the foot and car traffic of the neighborhood. The iconic San Francisco cable cars journeys through the neighborhood's hills, which provides views for numerous historical city landlords, including the Golden Gate Bridge and the commercial streets along Polk and Hyde. Neighborhood tenants surrounding the area include: Saint Frank Coffee, Cheese Plus, Swensen's Ice Cream, and many more.



BLUE BARN



TURNTABLE AT LORD STANLEY



CAFE REVEILLE



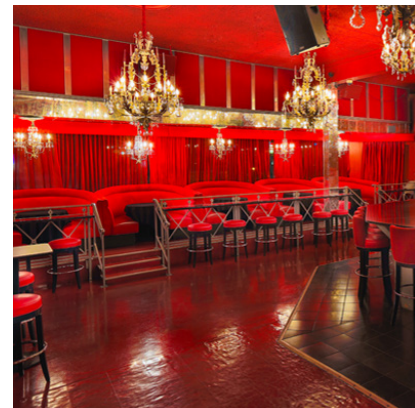
CHEESE PLUS



BOB'S DONUTS



PHILZ COFFEE



NICK'S CRISPY TACO



FLORI'S



BIONDIVINO



BELL TOWER



AMELIE



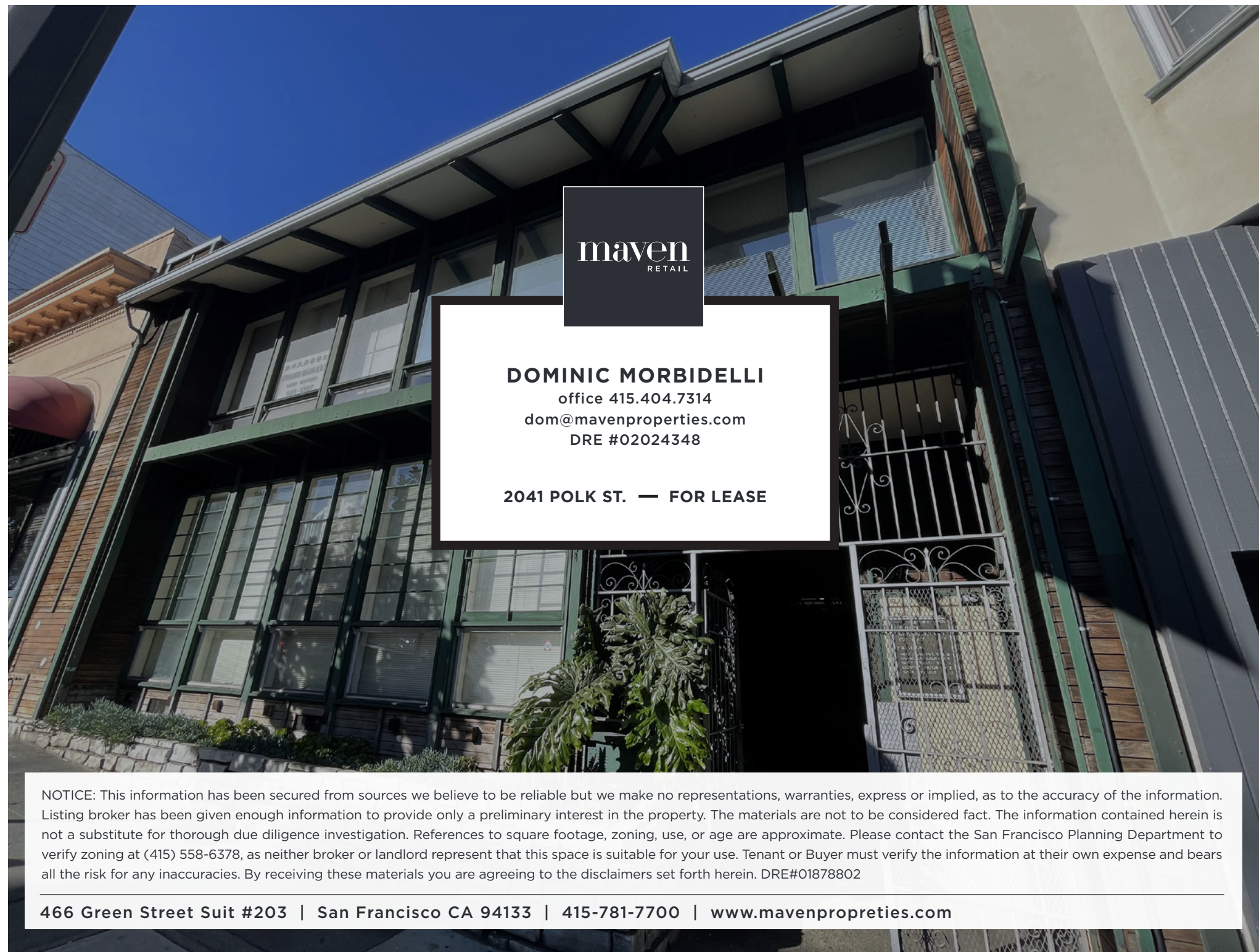
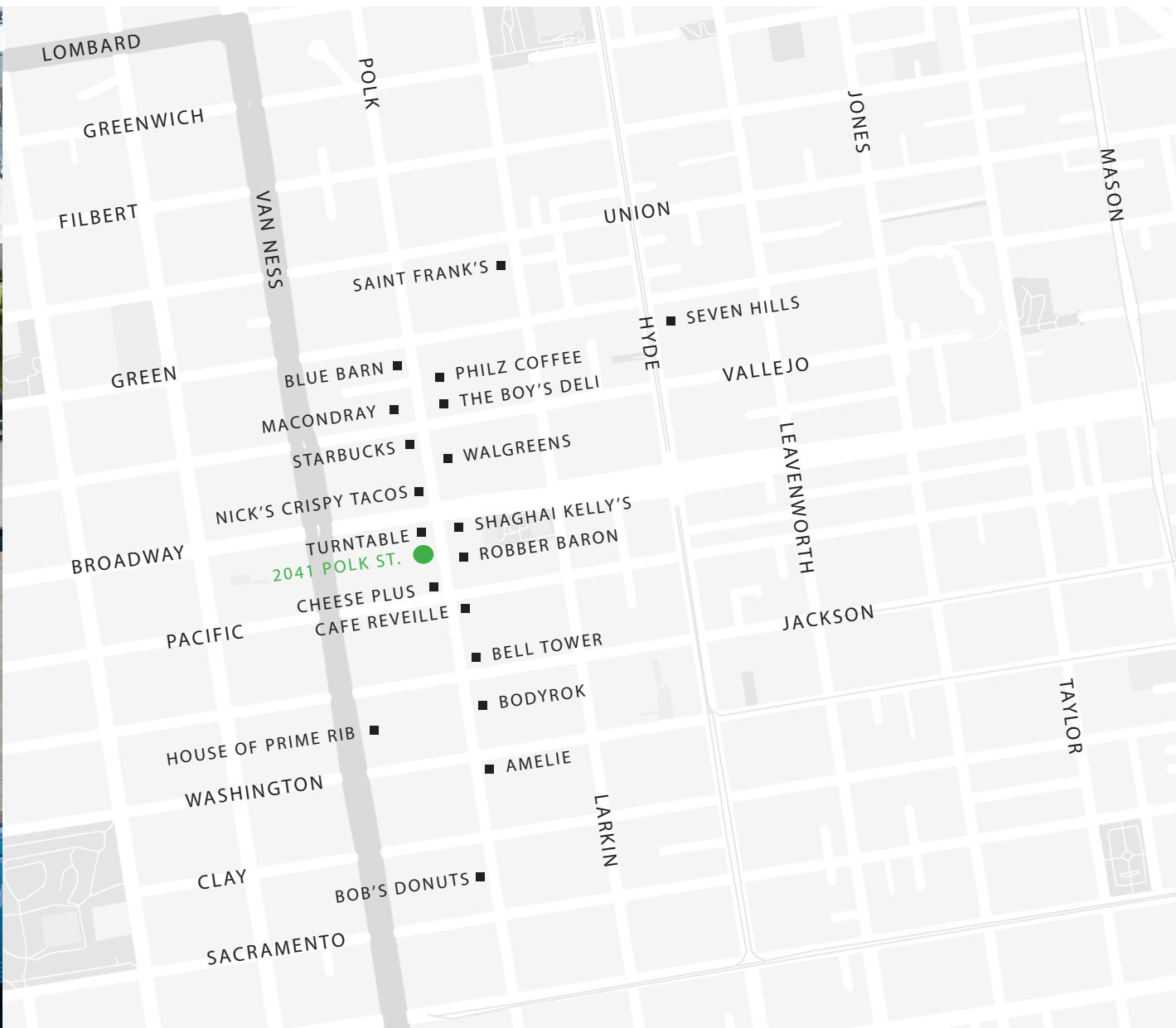
BODYROK



SEVEN HILLS



ROBBER BARON



DOMINIC MORBIDELLI
office 415.404.7314
dom@mavenproperties.com
DRE #02024348

2041 POLK ST. — FOR LEASE

NOTICE: This information has been secured from sources we believe to be reliable but we make no representations, warranties, express or implied, as to the accuracy of the information. Listing broker has been given enough information to provide only a preliminary interest in the property. The materials are not to be considered fact. The information contained herein is not a substitute for thorough due diligence investigation. References to square footage, zoning, use, or age are approximate. Please contact the San Francisco Planning Department to verify zoning at (415) 558-6378, as neither broker or landlord represent that this space is suitable for your use. Tenant or Buyer must verify the information at their own expense and bears all the risk for any inaccuracies. By receiving these materials you are agreeing to the disclaimers set forth herein. DRE#01878802

466 Green Street Suit #203 | San Francisco CA 94133 | 415-781-7700 | www.mavenpropreties.com