



RESTAURANT

2360 VAN NESS AVENUE

maven
RETAIL



- **+/- 1,757 SF**
- **Second Generation Restaurant/Bar**
Prominent hard corner location
- **High Ceilings**
- **Existing Hood in Place**
- **Second generation kitchen FFE in place**
- **No key money**
- **Great natural lighting with windows fronting 2 streets**
- **Supportive Landlord**
- **Close To Public Transportation**
Existing Businesses Include Blue Barn, St. Frank, La Folie, Cole Hardware, Crunch Fitness and more

FEATURES

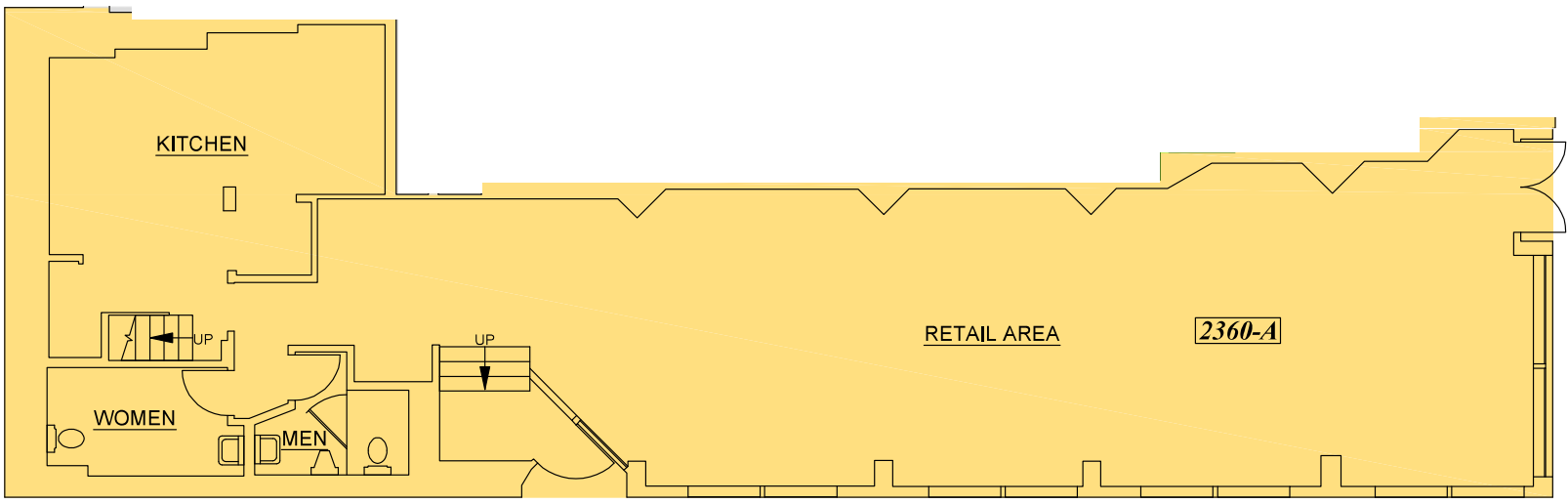
Russian Hill/Upper Polk 2nd generation restaurant for lease. Excellent opportunity for startup or existing operators. Type 1 hood in place, great visibility, and abundant natural lighting. Many nearby retailers & restaurants such as Saint Frank Coffee, Nick's Crispy Tacos, Macondray, Mezcalito, Nisei, Split, Philz Coffee, Fiorella, and more.



You Can't Sit With Us



FLOOR PLAN



NEIGHBORHOOD

KAIYŌ COW HOLLOW
TAMASHISOUL

UNSALTED BUTTER

AVOTOASTY

CAMINO ALTO

ROAM ARTISAN BURGERS

BLUE FOG MARKET

BOBO'S

KUI SHIN BO

BLACK MAGIC VODOO

2360
VAN NESS AVE

NOTES FROM UNDERGROUND

MATTERHORN RESTAURANT AND BAKERY

WASABI & GINGER

TURNTABLE AT LORD STANLEY

HAPPY DONUTS

HOUSE OF PRIME RIB

AUX DELICES
MEZCALITO

WOODS POLK STATION

BLUE BARN

MACONDRAY

STARBUCKS

PEET'S COFFEE

TEASPOON

NICK'S CRISPY TACOS

BERBER

HARRIS' RESTAURANT

CHEESE PLUS

ZERO&

SAINT FRANK COFFEE

RESTAURANT NISEI

SPLIT

FIGIELLA POLK

PHILZ COFFEE

THE BOYS' DELI

HUMMUS MEDITERRANEAN KITCHEN

SHANGHAI KELLY'S
MUSE JUICE BAR

ROBBERBARON

CAFE RÉVEILLE

BOWL'D ACAI

BELL TOWER

HOT COOKIE

OKOZE SUSHI

SWENSEN'S

UNION LARDER

ZA PIZZA

FRASCATI

AMARENA

ABRAZO

ELEPHANT SUSHI

SEVEN HILLS

THE SOAPBOX CAFE

CAFÉ MEUSE

Walk/Bike/Transit Score



100

WALK SCORE



74

BIKE SCORE



84

TRANSIT SCORE

BUS LINES: 19, 45, 49, 90



THE SNUG



SEVEN HILLS



HARRIS' RESTAURANT



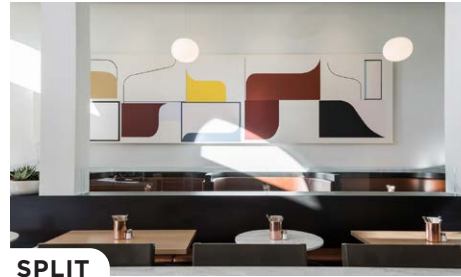
BERBER



NICK'S CRISPY TACOS



BLUE BARN



SPLIT



SAINT FRANK COFFEE

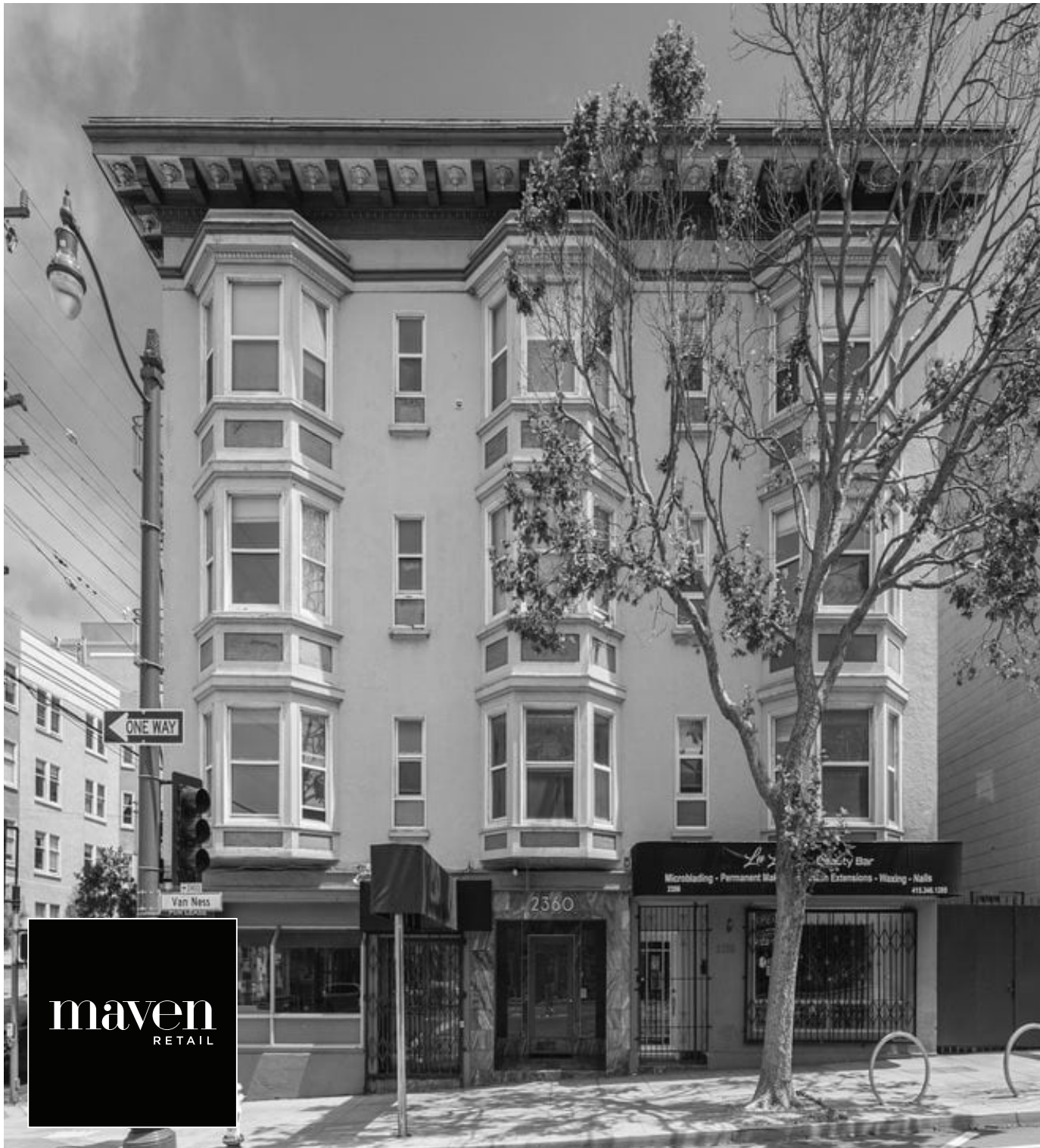


ROAM ARTISAN BURGERS

**PACIFIC HEIGHTS/
RUSSIAN HILL**

2360 Van Ness sits between Pacific Heights and Russian Hill.

Pacific Heights maintains a quiet, residential feel while offering proximity to Fillmore Street shopping, the pastoral Presidio, and Japantown's culinary delights. The nightlife scene centers around Fillmore Street, which mixes upscale shops, sidewalk cafes made for people-watching, historic buildings like the art deco Clay Theatre, and local favorite restaurants like La Mediterranee and the nearby Pizzeria Delfina. On the other hand, Russian Hill is home to a variety of things to do. The neighborhood is also home to a Diego Rivera fresco, comedy clubs, restaurants, and nightlife.



Contact

HALEY KLEIN

office 415.404.7330

haley@mavenproperties.com

DRE #1907308

JOAN RUYLE

office 415.404.7313

joan@mavenproperties.com

DRE #02006025

NOTICE: This information has been secured from sources we believe to be reliable but we make no representations, warranties, express or implied, as to the accuracy of the information. Listing broker has been given enough information to provide only a preliminary interest in the property. The materials are not to be considered fact. The information contained herein is not a substitute for thorough due diligence investigation. References to square footage, zoning, use, or age are approximate. Please contact the San Francisco Planning Department to verify zoning at (415) 558-6378, as neither broker or landlord represent that this space is suitable for your use. Tenant or Buyer must verify the information at their own expense and bears all the risk for any inaccuracies. By receiving these materials you are agreeing to the disclaimers set forth herein. DRE#01878802

maven
RETAIL

466 Green Street Suite #203

San Francisco, CA 94133

415-781-770

www.mavenproperties.com