



1035 GEARY STREET
SAN FRANCISCO | CA

2ND GENERATION RESTAURANT FOR LEASE
+/- 600 SF

maven
RETAIL

FEATURES

Second generation restaurant opportunity situated on a high traffic street between Van Ness & Polk. Directly across the street from the new CPMC Van Ness Campus. High ceilings, great signage potential, and existing restaurant infrastructure. Nearby tenants include Maison Danel, Tommy's Joynt, Mel's Kitchen, Kuma Sushi, Ike's Sandwiches, Jane on Larkin, House of Thai, Sushi Sato, CPMC Van Ness Campus, Courtyard by Marriot, and many more.

- +/- 600 SF
- Type 1 hood
- High ceilings
- Great Signage Opportunity
- Nearby tenants include Maison Danel, Tommy's Joynt, Mel's Kitchen, Kuma Sushi, Ike's Sandwiches, Jane on Larkin, House of Thai, Sushi Sato, CPMC Van Ness Campus and many more





Lower Nob Hill

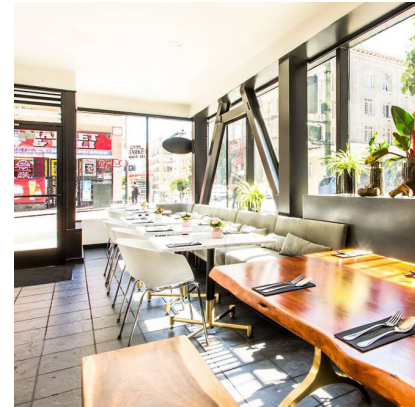
Occupying the steep slope below affluent Nob Hill, Lower Nob Hill is filled with attractive popular theatres, restaurants, and nightlife options. Lined with early 20th-century apartment buildings, the streets are also peppered with global eateries, bakeries, and bars. This district is just south of Nob Hill, north of the Tenderloin, and nearby Union Square. It is also home to the Masonic Auditorium where it holds some of the top concerts, comedians, and other shows all year long. It is surrounded by variety of public transportation including Muni, Bart, and even the cable cars.



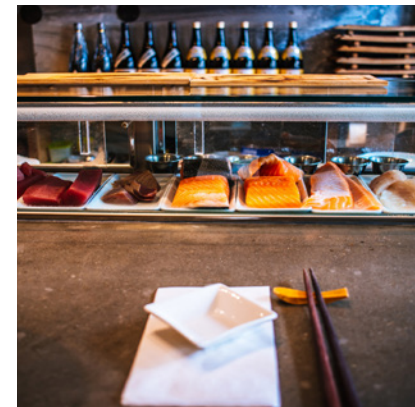
CMPC VAN NESS CAMPUS



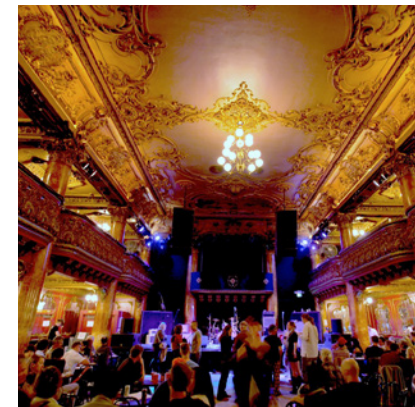
JANE ON LARKIN



HOUSE OF THAI



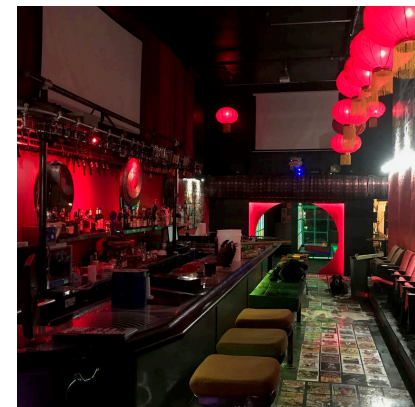
KUMA SUSHI + SAKE



GREAT AMERICAN MUSIC HALL



MEL'S KITCHEN



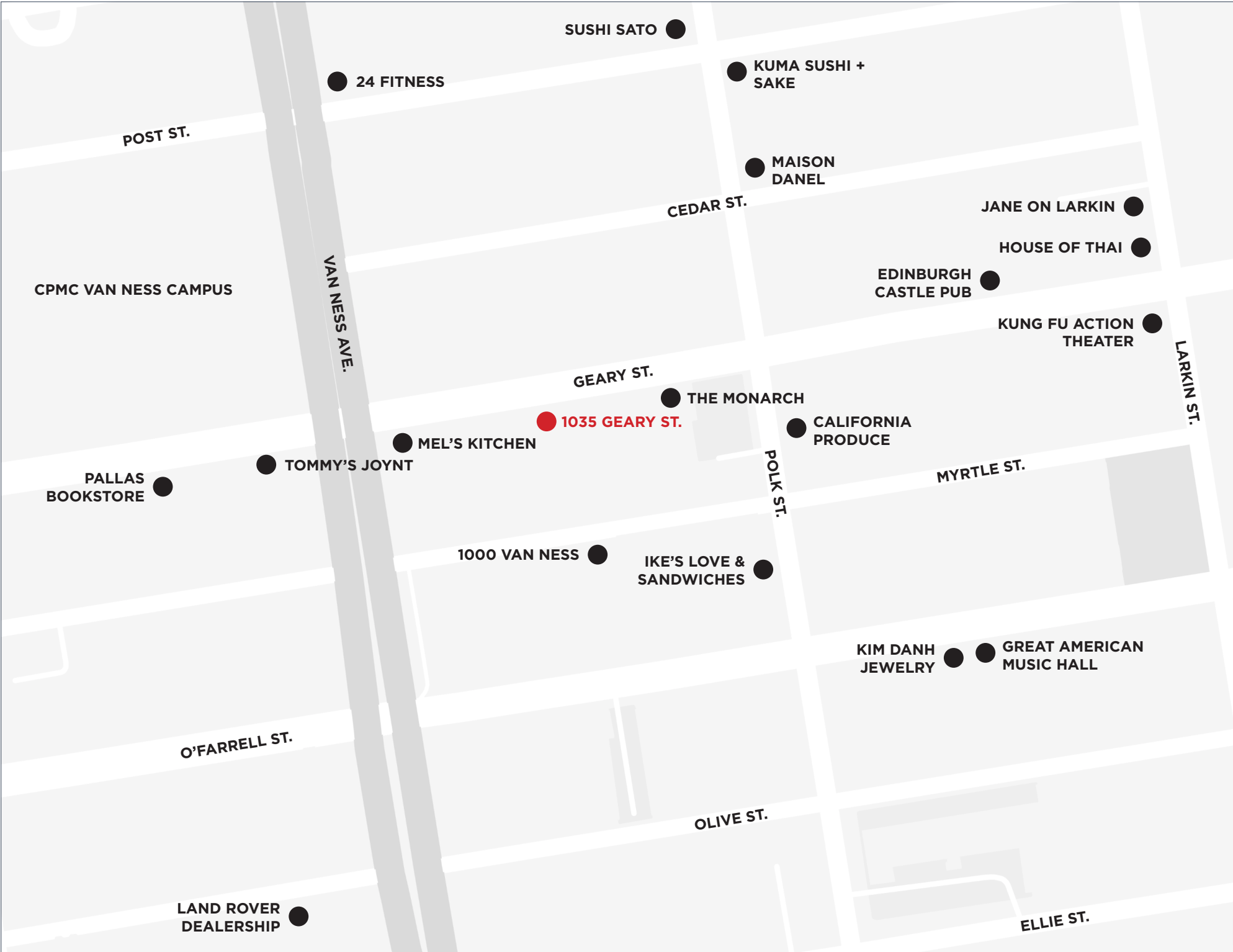
KUNG FU ACTION THEATER



IKE'S LOVE + SANDWICHES



SUSHI SATO



maven
RETAIL

JOAN RUYLE
office 415.404.7313
joan@mavenproperties.com
DRE #02006025

1035 GEARY STREET — FOR LEASE

NOTICE: This information has been secured from sources we believe to be reliable but we make no representations, warranties, express or implied, as to the accuracy of the information. Listing broker has been given enough information to provide only a preliminary interest in the property. The materials are not to be considered fact. The information contained herein is not a substitute for thorough due diligence investigation. References to square footage, zoning, use, or age are approximate. Please contact the San Francisco Planning Department to verify zoning at (415) 558-6378, as neither broker or landlord represent that this space is suitable for your use. Tenant or Buyer must verify the information at their own expense and bears all the risk for any inaccuracies. By receiving these materials you are agreeing to the disclaimers set forth herein. DRE#01878802

466 Green Street Suite #203 | San Francisco, CA 94133 | 415-781-7700 | www.mavenproperties.com

